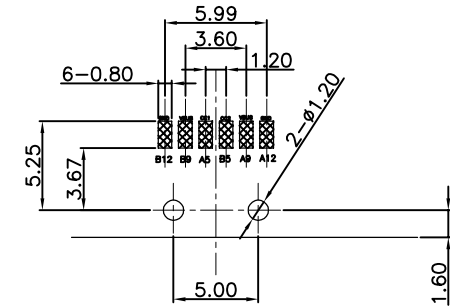
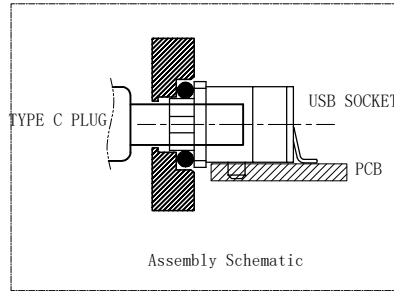
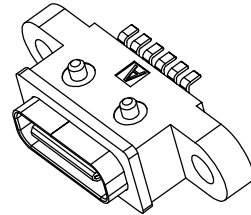
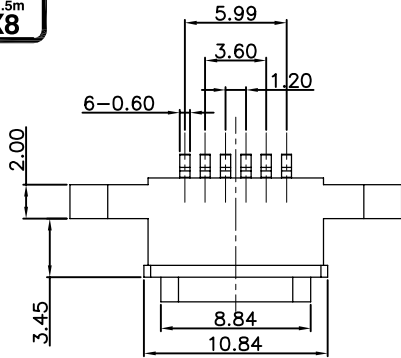


RoHS Compliant



Recommended P.C.B. Layout
Unspecified tolerance: ±0.05
(Top view)

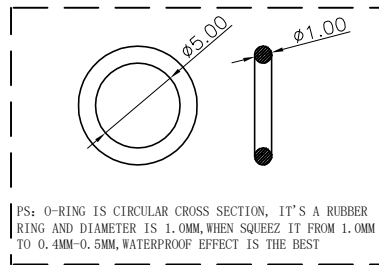
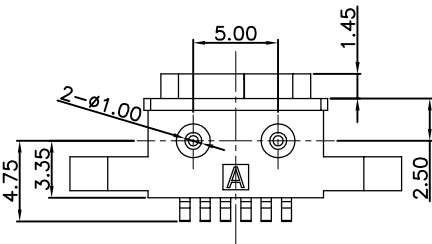
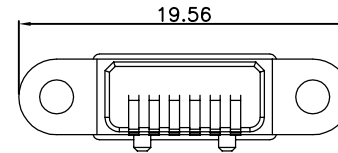
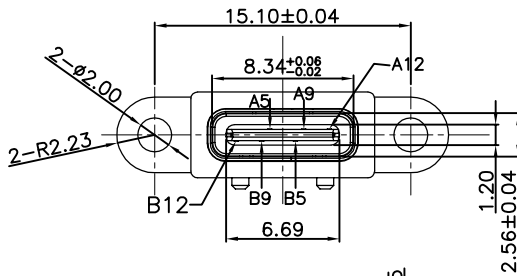
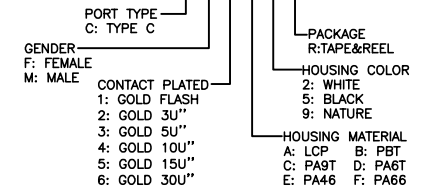
NOTES:

SPECIFICATION:

- CURRENT RATING: 3.0A MAX
- DIELECTRIC WITHSTAND VOLTAGE: 100VAC
- TEMPERATURE RANGE: -30 °C ~ 85 °C
- CONTACT RESISTANCE: 40 MILLIONHM MAX
- INSULATION RESISTANCE: 100 MEGOHMS MIN.
- INSERTION FORCE : 5N~20N
- UNMATING FORCE: 8N~20N
- DURABILITY:5,000 CYCLES

PART NO. INFORMATION

U06-C F X X 5 R - W075



PS: O-RING IS CIRCULAR CROSS SECTION, IT'S A RUBBER RING AND DIAMETER IS 1.0MM,WHEN SQUEEZ IT FROM 1.0MM TO 0.4MM-0.5MM, WATERPROOF EFFECT IS THE BEST

| | | | |
|-----|-------------|-----|-------------|
| A5 | CC1 | B12 | GND |
| A9 | VBUS | B9 | VBUS |
| A12 | GND | B5 | CC2 |
| PIN | SIGNAL NAME | PIN | SIGNAL NAME |

| 5 | Shell2 | 1 | SUS301 Ni Plating T=0.20mm | Ni: 40~120u" |
|------|-----------|-------|--|--|
| 4 | Shell1 | 1 | SUS301 Ni Plating T=0.25mm | Ni: 40~120u" |
| 3 | Housing2 | 1 | LCP(G.F30%) | |
| 2 | Contact | 5 | Phosphor bronze C5210R-EH Au/Ni Plating T=0.20mm | Ni: 40~160u"; Au: CONTACT AREA: 3u", OTHER AREA: G/F |
| 1 | Housing | 1 | PA9T (G.F30%) | |
| ITEM | PART NAME | Q' TY | FINISH | NOTE |

Bestcreate Technology Limited

TOLERANCES UNLESS OTHERWISE SPECIFIED:

| | | | |
|------|--------|-----|--------|
| .X | ± 0.30 | X.* | ± 2" |
| .XX | ± 0.20 | .X* | ± 1" |
| .XXX | ± 0.10 | .X* | ± 0.5" |

DESIGN: I. L DATE:

CHECKED: C. W DATE:

APPROVED: C. W DATE:

TITLE:

IPX8 6P Waterproof USB C Female Connector SMT

MATERILA:

PART NO: U06-CFXX5R-W075

SIZE: A4

FINSH:

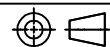
DWG NO: U06-CFXX5R-W075

REV: A

UNIT mm

SCALE 1=1

QUALITY SYMBOLS



Website: www.bsc-elec.com
Email: bestcreate@bsc-elec.com