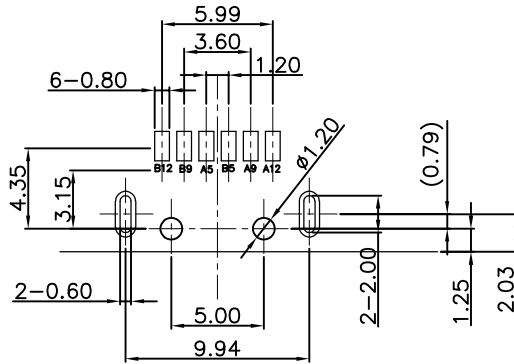
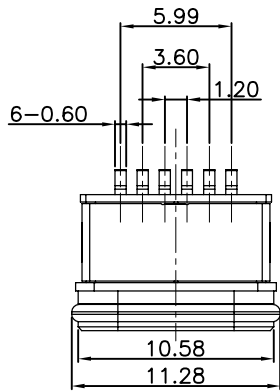
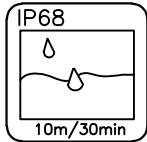
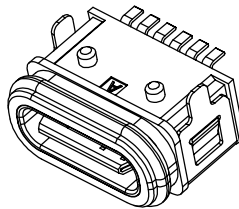
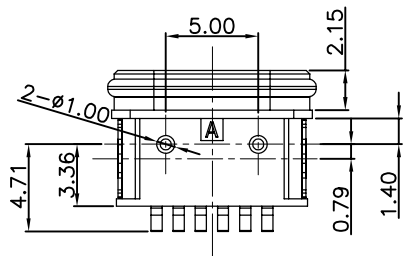
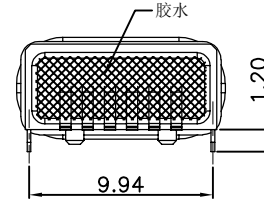
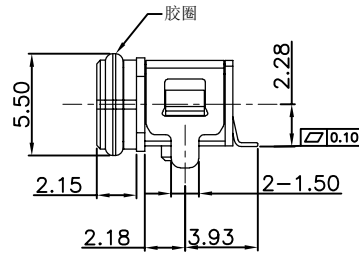
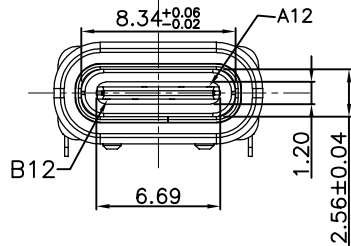


RoHS Compliant



Recommended P. C. B. Layout
Unspecified tolerance: ± 0.05
(Top view)

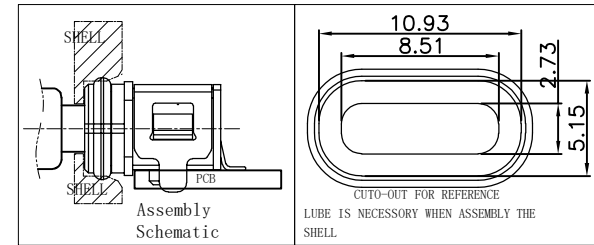


A5	CC1	B12	GND
A9	VBUS	B9	VBUS
A12	GND	B5	CC2
PIN	SIGNAL NAME	PIN	SIGNAL NAME

REVISIONS			
REV.	DESCRIPTION	DATE	DESIGN

SPECIFICATION:

- CURRENT RATING: 3.0A MAX
- DIELECTRIC WITHSTAND VOLTAGE: 100VAC
- TEMPERATURE RANGE: -30 °C ~ 85 °C
- CONTACT RESISTANCE: 40 MILLIONHM MAX
- INSULATION RESISTANCE: 100 MEGOHMS MIN.
- INSERTION FORCE : 5N~20N
- UNMATING FORCE: 8N~20N
- DURABILITY: 10,000 CYCLES
- WATER PROOFNESS: THIS PRODUCT IS BASED ON IPX8.



PART NO. INFORMATION

U06-C F X X 5 R - W087

GENDER:
F: FEMALE
M: MALE

PORT TYPE:
C: TYPE C

CONTACT PLATED:
1: GOLD FLASH
2: GOLD 3U"
3: GOLD 5U"
4: GOLD 10U"
5: GOLD 15U"
6: GOLD 30U"

PACKAGE:
R: TAPE REEL

HOUSING COLOR:
2: WHITE
5: BLACK
9: NATURE

HOUSING MATERIAL:
A: LCP B: PBT
C: PA9T D: PA6T
E: PA46 F: PA66
G: PA10T

ITEM	PART NAME	Q' TY	FINISH	NOTE
5	Shell2	1	SUS301 Ni Plating T=0.20mm	Ni:40u"Min;
4	Shell1	1	SUS301 Ni Plating T=0.25mm	Ni:40u"Min;
3	Housing2	1	PA10T(G.F30%)	
2	Contact	6	Phosphor bronze C5210R-EH Au/Ni Plating T=0.20mm	Ni:40u"Min; Au:CONTACT AREA., OTHER AREA:G/F
1	Housing	1	PA10T (G.F30%)	

Bestcreate Technology Limited

TOLERANCES UNLESS OTHERWISE SPECIFIED:

.X	± 0.30	X."	± 5"
.XX	± 0.20	.X"	± 2"
.XXX	± 0.15	.XX"	± 1"

Website: www.bsc-elec.com
Email: bestcreate@bsc-elec.com

DESIGN:
I. L

DATE:

CHECKED:
C. W

DATE:

APPROVED:
C. W

DATE:

TITLE:

IPX8 WATERPROOF 6P USB C FEMALE CONNECTOR SMT TYPE

MATERILA:

PART NO:

U06-CFXX5R-W087

SIZE:

A4

FINSH:

DWG NO:

U06-CFXX5R-W087

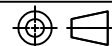
1 OF 1

REV:
A

UNIT
mm

SCALE
1=1

QUALITY
SYMBOLS



1

2

3

4

5

6

7

8