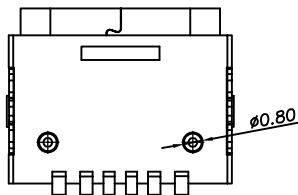
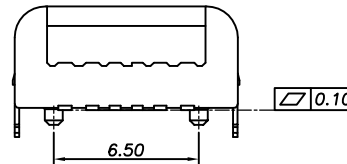
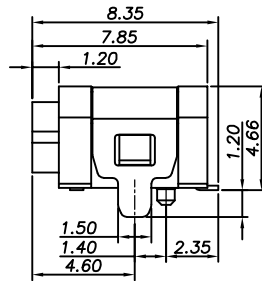
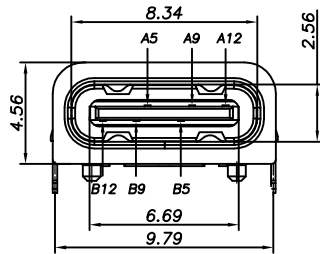
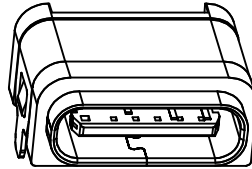
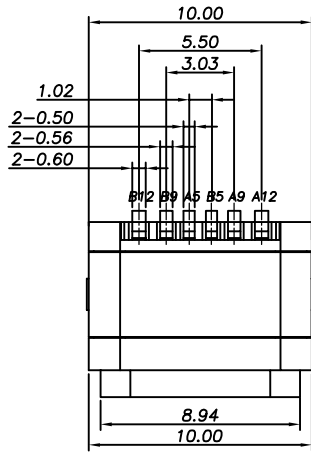


RoHS Compliant

REVISIONS			
REV.	DESCRIPTION	DATE	DESIGN



PART NO. INFORMATION

U06-C F X X 5 X - W040

- PORT TYPE
C: TYPE C
- GENDER
F: FEMALE
M: MALE
- CONTACT PLATED
1: GOLD FLASH
2: GOLD 3U"
3: GOLD 5U"
4: GOLD 10U"
5: GOLD 15U"
6: GOLD 30U"
- PACKAGE
R: TAPE&REEL
- HOUSING COLOR
2: WHITE
5: BLACK
9: NATURE
- HOUSING MATERIAL
A: LCP B: PBT
C: PA9T D: PA6T
E: PA46 F: PA66

NOTE:

- 1.MATERIAL SPECIFICATION:
 - 1.HOUSING: HIGH TEMPERATURE RESISTANT PLASTIC,UL94 V-0.
 - 2.COVER: STAINLESS STEEL
 - 3.CONTACTS: COPPER ALLOY
 - 4.MID PLATE: STAINLESS STEEL
 - 5.SHELL: STAINLESS STEEL
 - 6.O-RING: SILICONE RUBBER,BLACK
- 2.PLATING SPECIFICATION:
 - 2-1.CONTACTS:
 - Ni 50u" MIN. UNDER PLATED OVER ALL.
 - Au 1u" ON THE FUNCTIONAL AREA OF CONTACT.
 - Matte Sn ON THE SOLDER AREA OF CONTACT.
 - 2-2.SHELL:
 - Ni 30u" MIN. UNDER PLATED OVER ALL.
 - 2-3.COVER:
 - Ni 30u" MIN. UNDER PLATED OVER ALL.
 - 2-4.MID PLATE:
 - CLEAR ONLY.
- 3.MECHANICAL PERFORMANCE,
 - 3-1.INSERTION FORCE: 5~20N.
 - 3-2.REMOVAL FORCE: 8~20N.
 - 3-3.DURABILITY: 10000 CYCLES.
- 4.ELECTRICAL PERFORMANCE,
 - 4-1. CURRENT RATING:3.0A
VOLTAGE RATING:5.0V
 - 4-2. LLCR:
 - VBUS & GND PINS AND OTHER PINS: 40mΩ/PIN MAX.
 - SHIELD: 50mΩ/MAX.
 - LLCR MAX. CHANGE OF ALL PINS: 10mΩ.
 - 4-3.INSULATION RESISTANCE: 100MΩ MIN
 - 4-4.DIELECTRIC WITHSTAND VOLTAGE,AC 100V FOR 1 MINUTE.
- 5.ENVIRONMENTAL PERFORMANCE:
 - OPERATING TEMPERATURE: -30℃~+85℃.
- 6.IR REFLOW:
 - THE PEAK TEMPERATURE ON THE BOARD SHALL BE MAINTAINED FOR 10 SECONDS AT 260℃.
7. WATER PROOFNESS:THISPRODUCTIS BASED ON IPX5.

Bestcreate Technology Limited

TOLERANCES UNLESS OTHERWISE SPECIFIED:

.X	± 0.30	X.*	± 10'
.XX	± 0.20	.X*	± 8'
.XXX	± 0.10	.XX*	± 5'

Website:www.bsc-elec.com
Email:bestcreate@bsc-elec.com

DESIGN: I. L
DATE:

CHECKED: C. W
DATE:

APPROVED: C. W
DATE:

TITLE: IPX5 Waterproof 6P Type C USB Female Connector

MATERILA:	PART NO: U06-CFXX5X-W041	SIZE: A4
FINSH:	DWG NO: U06-CFXX5X-W041	

REV: A
UNIT: mm
SCALE: 1=1
QUALITY SYMBOLS: