

RoHS Compliant

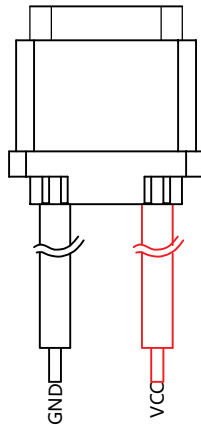
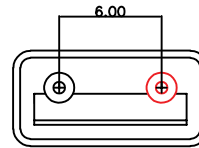
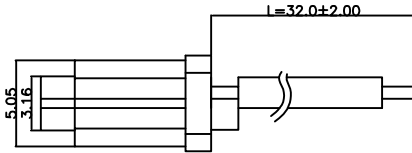
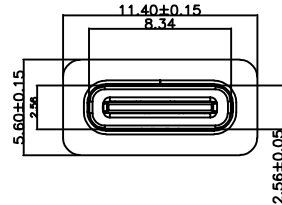
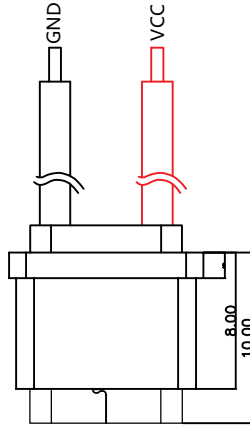


Table:

成品料号	零件名称	材料 / 电镀	
	硅胶线	硅胶Φ1.8mm, L=40.0mm	
	端子	C2680-RH	NO PLATING
	molding半成品	SUS 301 R-H	Sn 80~200u"
	外壳	SUS 301 R-H	电镀切料带后.

NOTES:

1.MATERIAL:

MOLDING: LCP UL94 V-0
CONTACT: COPPER ALLOY.
GOLD PLATED Min ON CONTACT AREA, 100u"
Min TIN (LEAD FREE) ON SOLDER AREA,
SHELL: SUS304-H, T=0.30±0.03mm
50u" NICKEL PLATING OVER ALL.

2.MECHANICAL:

INSERTION: 5~20N.
EXTRACTION: 8~20N AFTER TEST.
DURABILITY: 10000 CYCLES

3.ELECTRICAL:

CURRENT: 3A FOR VBUS;
1.25A FOR GND PIN.
0.25A FOR OTHER.

VOLTAGE: 20 V MAX
WITHSTANDING VOLTAGE: 100V AC R.M.S.
CONTACT RESISTANCE: 40mΩ MAX.
INSULATION RESISTANCE: 100MΩ MIN.

4.ENVIRONMENTAL

TEMPERATURE RANGE -25°C ~ +85°C

PART NO. INFORMATION

U06-C F X X 5 X - WWS05

GENDER F: FEMALE M: MALE	PORT TYPE C: TYPE C	CONTACT PLATED 1: GOLD FLASH 2: GOLD 3U" 3: GOLD 5U" 4: GOLD 10U" 5: GOLD 15U" 6: GOLD 30U"	PACKAGE B: BAG T: TRAY
			HOUSING COLOR 2: WHITE 5: BLACK 9: NATURE
			HOUSING MATERIAL A: LCP B: PBT C: PA9T D: PA6T E: PA46 F: PA66

Bestcreate Technology Limited

TOLERANCES UNLESS OTHERWISE SPECIFIED:

X.	±	0.30	X'	±	10°
.X	±	0.20	.X'	±	8°
.XX	±	0.10	.XX'	±	5°

Website: www.bsc-elec.com

Email: bestcreate@bsc-elec.com

DESIGN:
I. L

DATE:

CHECKED:

DATE:

APPROVED:

DATE:

TITLE:

IPX8 Waterproof 2P type C USB Female Connector
H=10.0mm, with silicone wire, L=Xmm

MATERIAL:

PART NO:

U06-CFXX5X-WWS05

SIZE:

A4

FINISH:

DWG NO:

U06-CFXX5X-WWS05

REV:

A

UNIT

mm

SCALE

1=1

QUALITY
SYMBOLS

