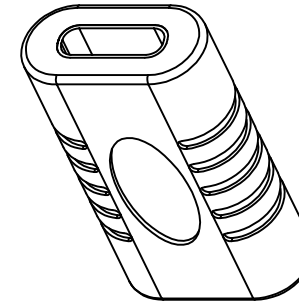
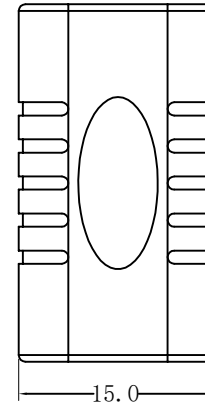
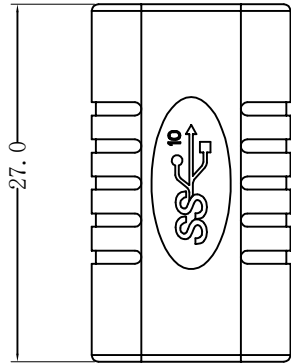
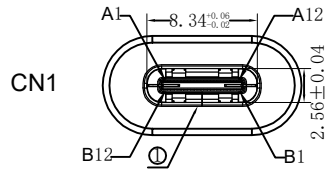


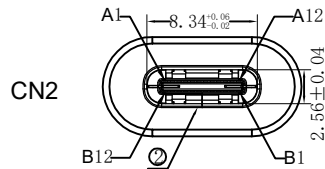
RoHS Compliant

REVISIONS			
REV.	DESCRIPTION	DATE	DESIGN



CONTACT

CN1	CN2
A1 A12 B1 B12	A1 A12 B1 B12
A4 A9 B4 B9	A4 A9 B4 B9
A5	A5
B5	B5
A6 B6	A6 B6
A7 B7	A7 B7
A2	B11
A3	B10
B11	A2
B10	A3
B2	A11
B3	A10
A11	B2
A10	B3
A8	B8
B8	A8
SHELL	SHELL



NOTES:

- 100% open short test condition;
- Conductor Resistance $\leq 5 \Omega$, insulation resistance $\geq 10M \Omega$.
High voltage test, DC 300V/10mS.
- Support Power Charging、Data Transfer.
- PCB Board Connection.

5	Outer Mold	PVC 45P BLACK	2.7G
4	Internal mold	PE SIZING MATERIAL TRANSPARENCY	1.3G
3	In-connection	PCB T=0.8MM	1PCS
2	Connector	USB TYPE C/F SHELL NICKEL PLATED PIN G/F	1PCS
1	Connector	USB TYPE C/F SHELL NICKEL PLATED PIN G/F	1PCS
NO	NAME	MATERIAL	NO.

Bestcreate Technology Limited

TOLERANCES UNLESS OTHERWISE SPECIFIED:

X.	± 0.50	X.*	± 5*
.X	± 0.30	.X*	± 2*
.XX	± 0.10	.XX*	± 1*

DESIGN: I. L DATE: 2017.3.1

CHECKED: C. W DATE: 2017.3.1

APPROVED: C. W DATE: 2017.3.1

TITLE: USB TYPE CF TO TYPE CF 180°

MATERILA: PART NO: AD31CFCF-003 SIZE: A4

FINSH: DWG NO: AD31CFCF-003

REV: A	UNIT mm	SCALE 1=1	QUALITY SYMBOLS	
--------	---------	-----------	-----------------	--

Website: www.bsc-elec.com
Email: bestcreate@bsc-elec.com