

RoHS Compliant

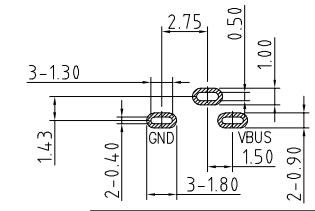


INTERFACE(FRONT VIEW)

A1	A2	A3	A4	A5	A6	A7	A8	A9	A10	A11	A12
GND			VBUS					VBUS			GND
B12	B11	B10	B9	B8	B7	B6	B5	B4	B3	B2	B1

PIN ASSIGNMENT

PIN NO.	A12&B12	A4&B4
SIGNAL NAME	GND	VBUS
PCB PAD NO.	C1	C2



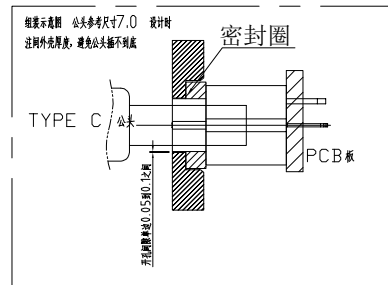
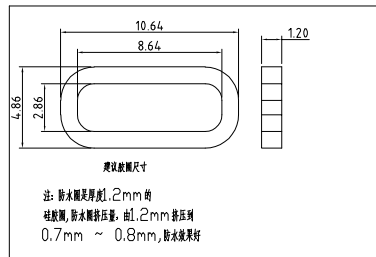
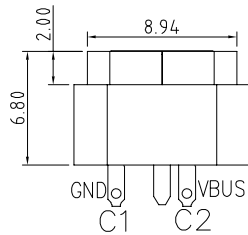
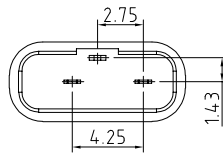
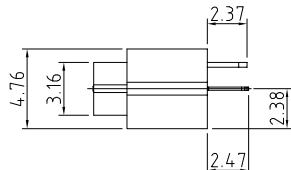
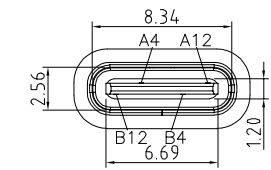
RECOMMENDED PCB LAYOUT(TOP VIEW)

THICKNESS T=1.0mm
DEFAULT TOLERANCE+/-0.05

NOTES:

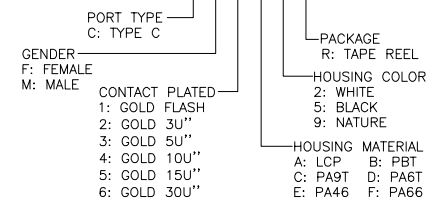
SPECIFICATION:

- CURRENT RATING: 3.0A MAX
- DIELECTRIC WITHSTAND VOLTAGE: 100VAC
- TEMPERATURE RANGE: -30 °C ~ 85 °C
- CONTACT RESISTANCE: 40 MILLIONHM MAX
- INSULATION RESISTANCE: 100 MEGOHMS MIN.
- INSERTION FORCE : 5N~20N
- UNMATING FORCE: 8N~20N
- DURABILITY:5000 CYCLES



PART NO. INFORMATION

U06-C F X X 5 R - W106



5		1		
4	Shell	1	SUS304 Ni Plating T=0.30mm	Ni:40~120u*;
3	Housing2	1	LCP(G.F30%)	
2	Contact	4	Phosphor bronze_C5210R-EH Au/Ni Plating T=0.20mm	Ni:40~160u*; Au:CONTACT AREA:3u*; OTHER AREA:G/F
1	Housing	1	PA9T (G.F30%)	
ITEM	PARTNAME	Q'TY	FINISH	NOTE

Bestcreate Technology Limited

TOLERANCES UNLESS OTHERWISE SPECIFIED:

X.	± 0.50	X.*	± 5*
.X	± 0.30	.X*	± 2*
.XX	± 0.10	.XX*	± 1*

DESIGN:
I.L

DATE:

CHECKED:
C.W

DATE:

APPROVED:
C.W

DATE:

TITLE:

**IPX8 WATERPROOF 2P USB C FEMALE
CONNECTOR VERTICAL DIP TYPE**

MATERILA:

PART NO:
U06-CFXX5R-W106

SIZE: A4

FINSH:

DWG NO:
U06-CFXX5R-W106

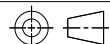
1 OF 1

REV: A

UNIT mm

SCALE 1=1

QUALITY SYMBOLS



Website:www.bsc-elec.com

Email:bestcreate@bsc-elec.com