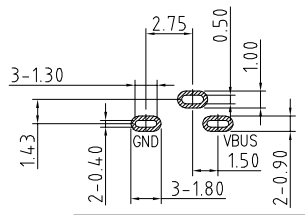
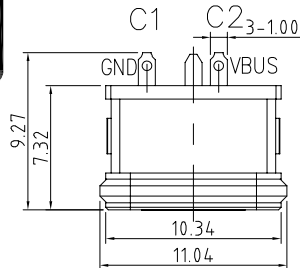
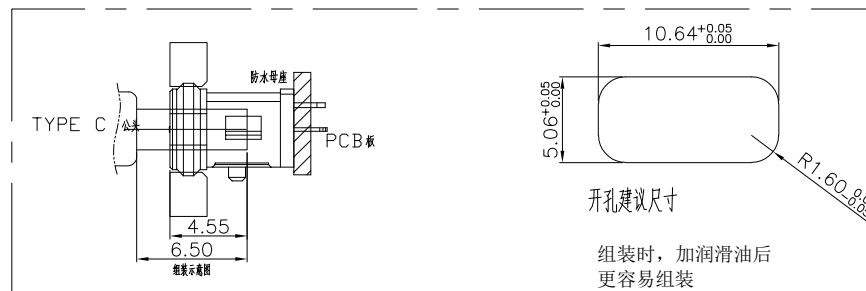
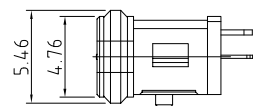
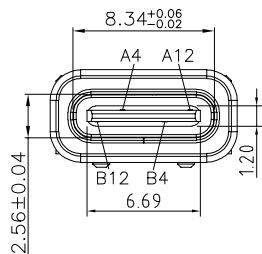


RoHS Compliant



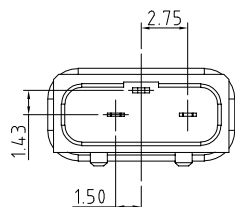
RECOMMENDED PCB LAYOUT(TOP VIEW)

THICKNESS T=1.0mm  
DEFAULT TOLERANCE+/-0.05



开孔建议尺寸

组装时，加润滑油后更容易组装



INTERFACE(FRONT VIEW)

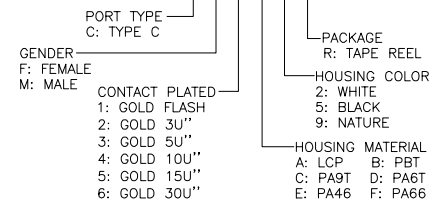
|     |     |     |      |    |    |    |    |    |      |     |     |
|-----|-----|-----|------|----|----|----|----|----|------|-----|-----|
| A1  | A2  | A3  | A4   | A5 | A6 | A7 | A8 | A9 | A10  | A11 | A12 |
| GND |     |     | VBUS |    |    |    |    |    | VBUS |     | GND |
| B12 | B11 | B10 | B9   | B8 | B7 | B6 | B5 | B4 | B3   | B2  | B1  |

PIN ASSIGNMENT

|             |         |       |
|-------------|---------|-------|
| PIN NO.     | A12&B12 | A4&B4 |
| SINGAL NAME | GND     | VBUS  |
| PCB PAD NO. | C1      | C2    |

PART NO. INFORMATION

**U06-C F X X 5 R - W117**



|      |          |      |  |  |
|------|----------|------|--|--|
| 4    | Shell1   | 1    | SUS304 Ni Plating T=0.3mm                        | Ni40~120u'   |
| 3    | Housing2 | 1    | LCP(G.F30%)                                      |  |
| 2    | Contact  | 4    | Phosphor bronze C5210R-EH Au/Ni Plating T=0.20mm | Ni40~160u'<br>Au:CONTACT AREA:3u',<br>OTHER AREA:G/F |
| 1    | Housing  | 1    | PA9T (G.F30%)                                    |  |
| ITEM | PARTNAME | Q'TY | FINISH   | NOTE   |

**Bestcreate Technology Limited**

TOLERANCES UNLESS OTHERWISE SPECIFIED:

|     |        |      |      |
|-----|--------|------|------|
| X.  | ± 0.50 | X.'  | ± 5' |
| .X  | ± 0.30 | .X'  | ± 2' |
| .XX | ± 0.10 | .XX' | ± 1' |

Website:www.bsc-elec.com  
Email:bestcreate@bsc-elec.com

DESIGN: I.L DATE:

CHECKED: C.W DATE:

APPROVED: C.W DATE:

TITLE:  
**IPX8 WATERPROOF 2P USB C FEMALE  
CONNECTOR VERTICAL DIP TYPE**

|           |                             |             |
|-----------|-----------------------------|-------------|
| MATERILA: | PART NO:<br>U06-CFXX5R-W117 | SIZE:<br>A4 |
| FINSH:    | DWG NO:<br>U06-CFXX5R-W117  | 1 OF 1      |

REV: A UNIT mm SCALE 1=1 QUALITY SYMBOLS