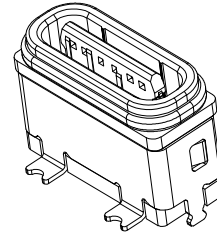
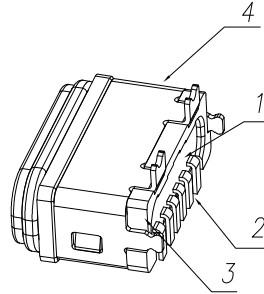
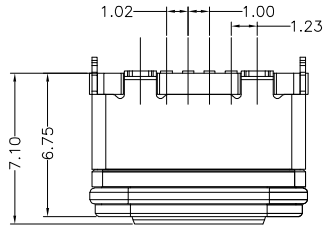


RoHS Compliant



Note:
 1.Material:
 1.1 Housing: LCP
 1.2 Contact:C5191,t=0.20mm
 1.3 InnerShell: LCP
 1.4 OutShell: SUS304
 2.ELECTRICAL:
 2-1:CURRENT RATING:
 VBUS AND GND CONTACTS RATED AT 1.5A
 PARALLELED FOR A TOTAL OF 3A;
 2-2:INITIAL CONTACT RESISTANCE :40 MEGOHMS
 2-3:DIELECTRIC WITHSTANDING VOLTAGE:
 100V AC MIN;
 3:MECHANICAL CHARACTERISTICS:
 3-1:MATING FORCE:5~20N
 3-2:UNMATING FORCE:8~20N(INITIAL),
 6~20N(AFTER 10000 CYCLES)
 3-3:FREQUENCY: 200±50 CYCLES /HOUR,10000 CYCLES
 3-4:OPERATING TEMPERATURE ;-40~80°.
 4: WATERPROOF: IPX7.

Cap dimensions

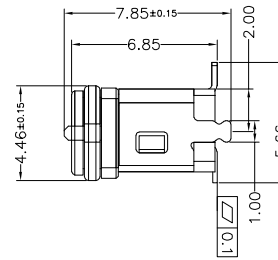
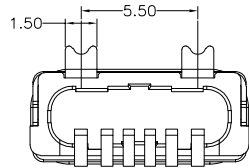
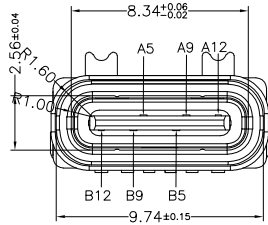
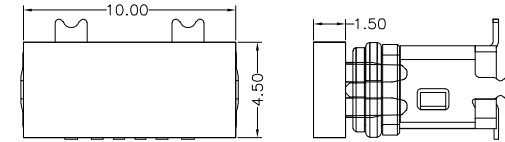
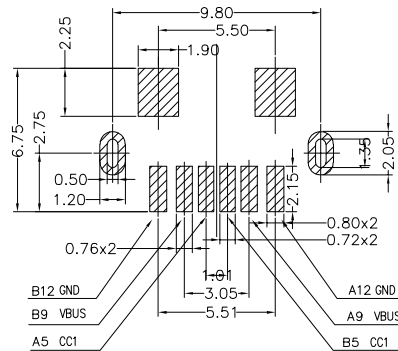
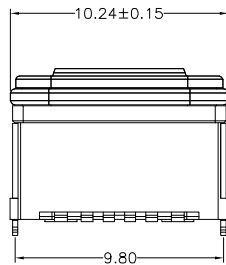


TABLE B

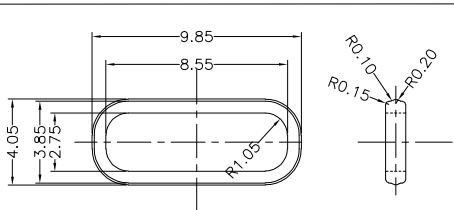
A5	CC1	B12	GND
A9	VBUS	B9	VBUS
A12	GND	B5	CC2
PIN	SIGNAL NAME	PIN	SIGNAL NAME



PCB LAYOUT 图仅供参考



O-RING



PART NO. INFORMATION

U06-C F X X 5 R - W012

PORT TYPE
 C: TYPE C
 GENDER
 F: FEMALE
 M: MALE
 CONTACT PLATED
 1: GOLD FLASH
 2: GOLD 3U''
 3: GOLD 5U''
 4: GOLD 10U''
 5: GOLD 15U''
 6: GOLD 30U''
 PACKAGE
 R: TAPE REEL
 HOUSING COLOR
 2: WHITE
 5: BLACK
 9: NATURE
 HOUSING MATERIAL
 A: LCP B: PBT
 C: PA9T D: PA6T
 E: PA46 F: PA66

Bestcreate Technology Limited

TOLERANCES UNLESS OTHERWISE SPECIFIED:

.X	± 0.20	.X*	± 5*
.XX	± 0.15	.X*	± 2*
.XXX	± 0.10	.XX*	± 1*

Website:www.bsc-elec.com
 Email:bestcreate@bsc-elec.com

DESIGN: I.L DATE:

CHECKED: C.W DATE:

APPROVED: C.W DATE:

TITLE:
IPX7 Waterproof USB TYPE C 6P FEMALE CONNECTOR VERTICAL SMT, H=6.8MM

MATERIALA: PART NO: U06-CFXX5R-W012 SIZE: A4

FINSH: DWG NO: U06-CFXX5R-W012

REV: A UNIT mm SCALE 1=1 QUALITY SYMBOLS