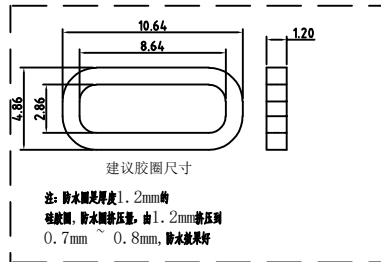
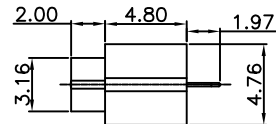
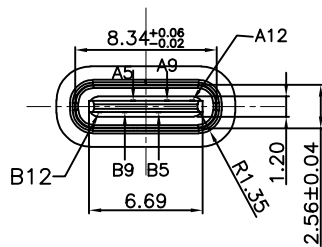
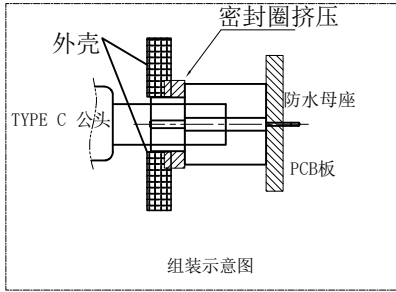
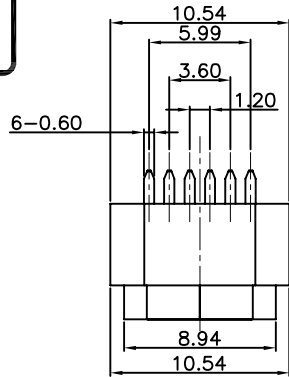


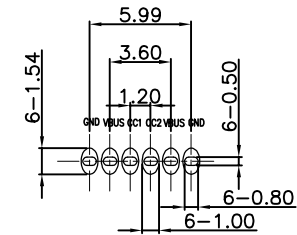
RoHS Compliant



| | | | |
|-----|-------------|-----|-------------|
| A5 | CC1 | B12 | GND |
| A9 | VBUS | B9 | VBUS |
| A12 | GND | B5 | CC2 |
| PIN | SIGNAL NAME | PIN | SIGNAL NAME |

| 4 | Shell1 | 1 | SUS304 Ni Plating T=0.25mm | Ni: 40~120u"; |
|------|-----------|-------|--|--|
| 3 | Housing2 | 1 | LCP(G.F30%) | |
| 2 | Contact | 5 | Phosphor bronze C5210R-EH Au/Ni Plating T=0.20mm | Ni: 40~160u"; Au: CONTACT AREA: 3u", OTHER AREA: G/F |
| 1 | Housing | 1 | PA9T (G.F30%) | |
| ITEM | PART NAME | Q' TY | FINISH | NOTE |

| REVISIONS | | | |
|-----------|-------------|------|--------|
| REV. | DESCRIPTION | DATE | DESIGN |
| | | | |



Recommended P.C.B. Layout
Unspecified tolerance: ±0.05
(Top view)

RECOMMENDED PCB LAYOUT(TOP VIEW)

THICKNESS T=1.0mm
DEFAULT TOLERANCE+/-0.05

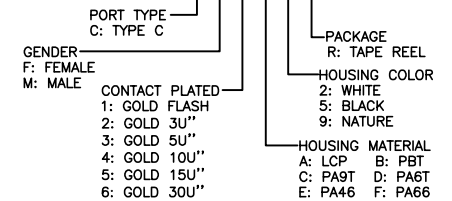
NOTES:

SPECIFICATION:

- CURRENT RATING: 3.0A MAX
- DIELECTRIC WITHSTAND VOLTAGE: 100VAC
- TEMPERATURE RANGE: -30 °C ~ 85 °C
- CONTACT RESISTANCE: 40 MILLIONHM MAX
- INSULATION RESISTANCE: 100 MEGOHMS MIN.
- INSERTION FORCE : 5N~20N
- UNMATING FORCE: 8N~20N
- DURABILITY:5000 CYCLES

PART NO. INFORMATION

U06-C F X X 5 R - W105



Bestcreate Technology Limited

TOLERANCES UNLESS OTHERWISE SPECIFIED:

| | | | |
|-----|--------|------|------|
| X. | ± 0.50 | X.* | ± 5° |
| .X | ± 0.30 | .X* | ± 2° |
| .XX | ± 0.10 | .XX* | ± 1° |

Website: www.bsc-elec.com

Email: bestcreate@bsc-elec.com

DESIGN:

I. L

DATE:

CHECKED:

C. W

DATE:

APPROVED:

C. W

DATE:

TITLE:

IPX8 WATERPROOF 6P USB C FEMALE
CONNECTOR VERTICAL DIP TYPE

MATERILA:

FINSH:

PART NO:

U06-CFXX5R-W105

DWG NO:

U06-CFXX5R-W105

SIZE:

A4

1 OF 1

REV: A

UNIT mm

SCALE 1=1

QUALITY SYMBOLS

