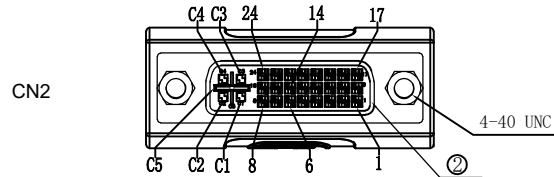
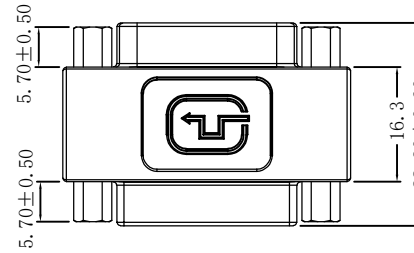
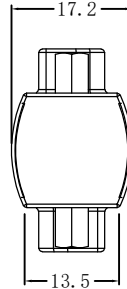
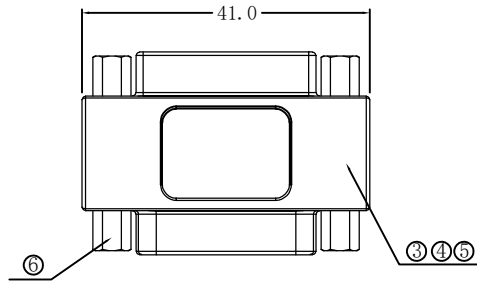
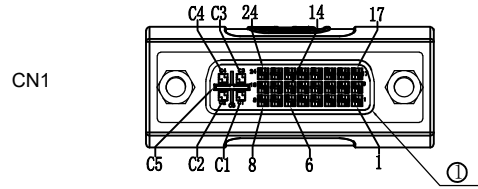


RoHS Compliant

REVISIONS			
REV.	DESCRIPTION	DATE	DESIGN



接点表

CN1	CN2	CN1	CN2
01	01	16	16
02	02	17	17
03	03	18	18
04	04	19	19
05	05	20	20
06	06	21	21
07	07	22	22
08	08	23	23
09	09	24	24
10	10	C1	C1
11	11	C2	C2
12	12	C3	C3
13	13	C4	C4
14	14	C5	C5
15	15	SHELL	SHELL

注:

- 100%短/断路&错线测试条件.
- 导通阻抗 $\leq 3\Omega$, 绝缘阻抗 $\geq 10M\Omega$. 高压测试, DC 300V/10mS.
- 产品采用PCB连接.
- 所用材质须符合ROHS要求.

序号	名称	材料	用量
5	螺丝	母螺丝 镀镍 5.70*9.5MM	4PCS
5	外模	PVC胶料 45P 贝吉色	3.7G
4	内模	PE胶料 透明	3.2G
3	内连接	PCB板叠层连接 T=1.2MM	2PCS
2	连接器	DVI (24+5) F 铁壳镀镍 PIN针镀金 白胶	1PCS
1	连接器	DVI (24+5) F 铁壳镀镍 PIN针镀金 白胶	1PCS

Bestcreate Technology Limited

TOLERANCES UNLESS OTHERWISE SPECIFIED:

X.	± 0.50	X.'	± 5'
.X	± 0.30	.X'	± 2'
.XX	± 0.10	.XX'	± 1'

DESIGN: I. L DATE: 2017. 3. 1

CHECKED: C. W DATE: 2017. 3. 1

APPROVED: C. W DATE: 2017. 3. 1

TITLE: DVI24+5 FEMALE TO DVI24+5P FEMALE ADAPTER

MATERILA: PART NO: DVI245TODVI245F-002 SIZE: A4

FINSH: DWG NO: DVI245TODVI245F-002

REV: A UNIT mm SCALE 1=1 QUALITY SYMBOLS

Website:www.bsc-elec.com Email:bestcreate@bsc-elec.com

1

2

3

4

5

6

7

8