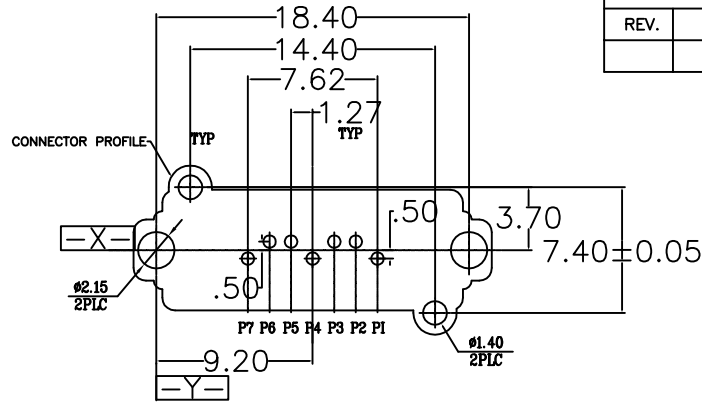
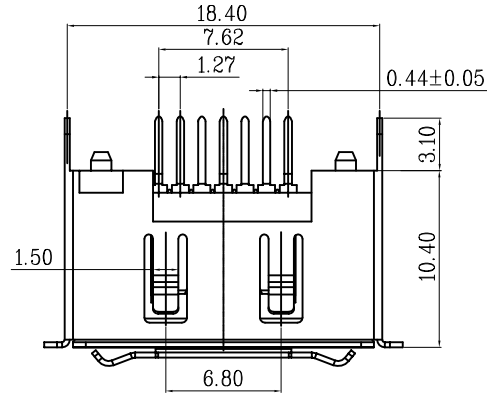
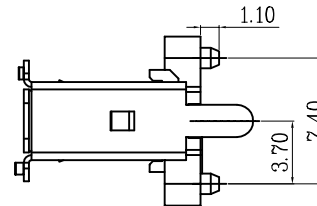
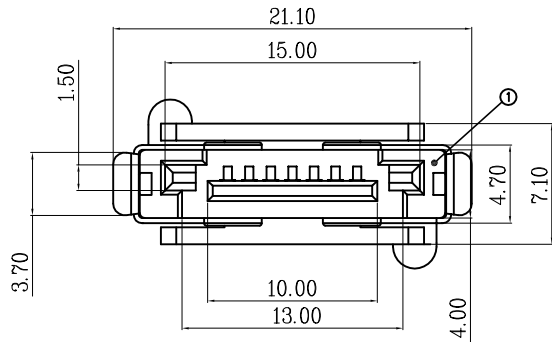


RoHS Compliant

REVISIONS			
REV.	DESCRIPTION	DATE	DESIGN



RECOMMEND P.C BOARD MOUNTING DIMENSIONS t=1.60mm  
PCB TOLERANCE: ±0.05



PART NO. INFORMATION

**ESATA - M X A 5 T -002**

GENDER:  
F: FEMALE  
M: MALE

CONTACT PLATED:  
1: GOLD FLASH/TIN  
2: 15U" GOLD/TIN  
3: 30U" GOLD/TIN

PACKAGE:  
T: TRAY R:TAPE REEL  
HOUSING COLOR:  
5: BLACK  
HOUSING MATERIAL:  
A: LCP

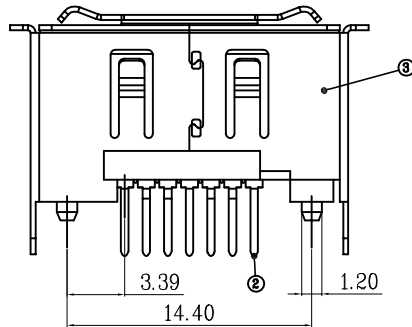
NOTES:

1. MATERIAL:

HOUSING: THERMOPLASTIC, HIGH TEMP, 30% G/F UL94 V-0  
COLOR: BLACK  
CONTACT: BRASS C2680R-H,T=0.25MM  
SHELL: BRASS C2680R-H,T=0.30MM

2. FINISH:

CONTACT: 3u" GOLD/TIN PLATING ON CONTACT AREA  
100u" MIN.TIN PLATING ON SOLDER TAILS  
50u" MIN.NICKEL UNDERPLATING OVER ALL  
SHELL: 50u" MIN.NICKEL UNDERPLATING OVER ALL



**Bestcreate Technology Limited**

TOLERANCES UNLESS OTHERWISE SPECIFIED:

X.	± 0.30	X.*	± 3"
.X	± 0.20	.X*	± 2"
.XX	± 0.15	.XX*	± 1"

Website: [www.bsc-elec.com](http://www.bsc-elec.com)  
E-mail: [bestcreate@bsc-elec.com](mailto:bestcreate@bsc-elec.com)

DESIGN: I.L  
DATE: 2017.3.1

CHECKED: C.W  
DATE: 2017.3.1

APPROVED: C.W  
DATE: 2017.3.1

TITLE:

E-SATA 7P立式双排180度DIP

MATERIAL:

PART NO: ESATA-MXA5T-002

SIZE: A4

FINISH:

DWG NO: ESATA-MXA5T-002

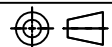
SHEET: 1 OF 1

REV: A

UNIT: mm

SCALE: 1=1

QUALITY SYMBOLS



1

2

3

4

5

6

7

8