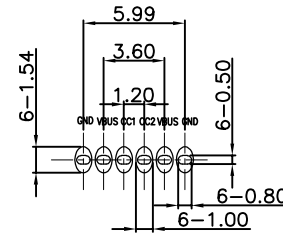
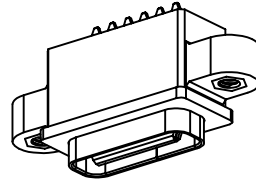
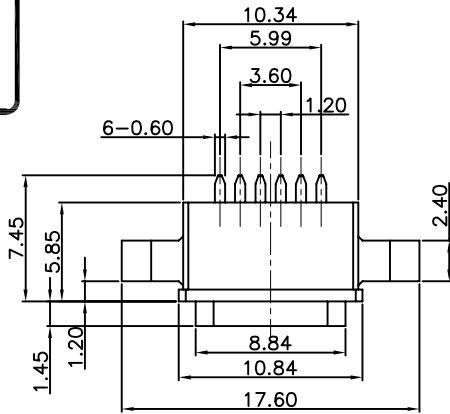


RoHS Compliant



Recommended P.C.B. Layout  
Unspecified tolerance: ±0.05  
(Top view)

RECOMMENDED PCB LAYOUT(TOP VIEW)

THICKNESS T=1.0mm  
DEFAULT TOLERANCE+/-0.05

NOTES:

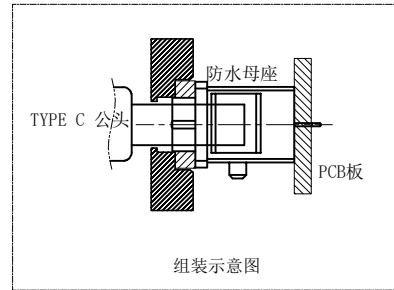
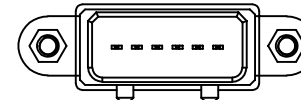
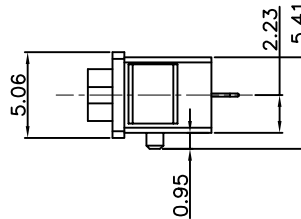
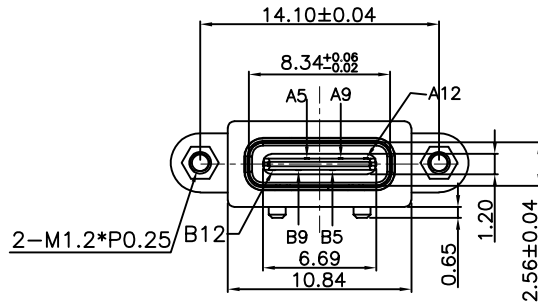
SPECIFICATION:

1. CURRENT RATING: 3.0A MAX
2. DIELECTRIC WITHSTAND VOLTAGE: 100VAC
3. TEMPERATURE RANGE: -30 °C ~ 85 °C
4. CONTACT RESISTANCE: 40 MILLIONHM MAX
5. INSULATION RESISTANCE: 100 MEGOHMS MIN.
6. INSERTION FORCE : 5N~20N
7. UNMATING FORCE: 8N~20N
8. DURABILITY:5000 CYCLES

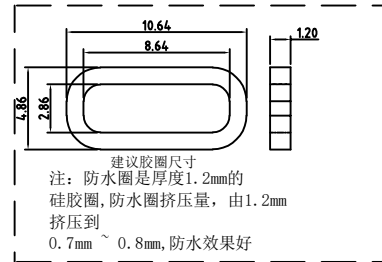
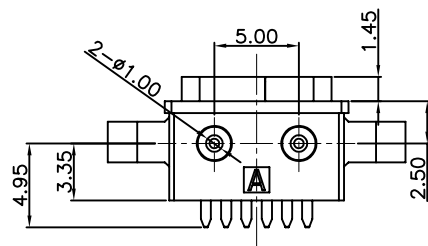
PART NO. INFORMATION

U06-C F X X 5 R - W107

- PORT TYPE: C: TYPE C
- GENDER: F: FEMALE, M: MALE
- CONTACT PLATED:  
1: GOLD FLASH  
2: GOLD 3U"  
3: GOLD 5U"  
4: GOLD 10U"  
5: GOLD 15U"  
6: GOLD 30U"
- PACKAGE: R: TAPE REEL
- HOUSING COLOR:  
2: WHITE  
5: BLACK  
9: NATURE
- HOUSING MATERIAL:  
A: LCP B: PBT  
C: PA9T D: PA6T  
E: PA46 F: PA66



组装示意图



A5	CC1	B12	GND
A9	VBUS	B9	VBUS
A12	GND	B5	CC2
PIN	SIGNAL NAME	PIN	SIGNAL NAME

5	Screw	1	C3604 Ni Plating	N1:40°120u"
4	Shell1	1	SUS304 Ni Plating T=0.25mm	N1:40°120u"
3	M-D2	1	LCP(G.F30%)	
2	Contact	5	Phosphor bronze C5210R-EH Au/Ni Plating T=0.20mm	N1:40°160u" Au:CONTACT AREA:3u", OTHER AREA:G/F
1	Housing	1	PA9T (G.F30%)	
ITEM	PART NAME	Q' TY	FINISH	NOTE

Bestcreate Technology Limited

TOLERANCES UNLESS OTHERWISE SPECIFIED:

X.	± 0.50	X.'	± 5'
.X	± 0.30	.X'	± 2'
.XX	± 0.10	.XX'	± 1'

Website:www.bsc-elec.com  
Email:bestcreate@bsc-elec.com

DESIGN: I. L. DATE:

CHECKED: C. W. DATE:

APPROVED: C. W. DATE:

TITLE: IPX8 WATERPROOF 6P USB C FEMALE CONNECTOR VERTICAL DIP WITH SCREW

MATERILA: PART NO: U06-CFXX5R-W108 SIZE: A4

FINSH: DWG NO: U06-CFXX5R-W108 1 OF 1

REV: A UNIT mm SCALE 1=1 QUALITY SYMBOLS