

RoHS Compliant

REVISIONS

REV.	DESCRIPTION	DATE	DESIGN

NOTE:

1. MATERIAL:

- 1.1 INSULATOR: LCP UL 94V-0
- 1.2 CONTACT: COPPER (5PIN: T=0.20/4PIN: T=0.25)
- 1.3 SHELL: BRASS (T=0.30/T=0.20)

2. ELECTRICAL CHARACTERISTICS:

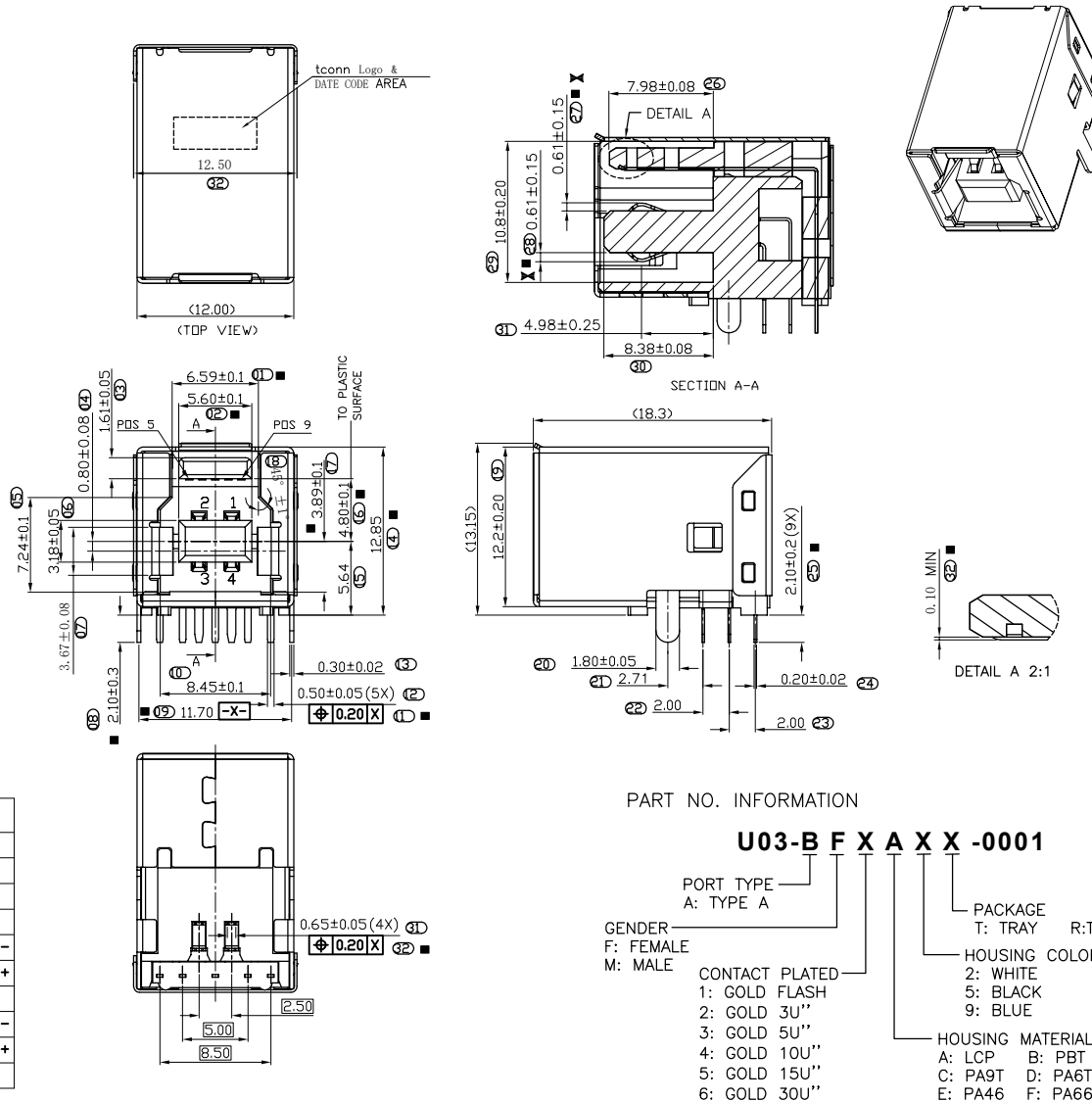
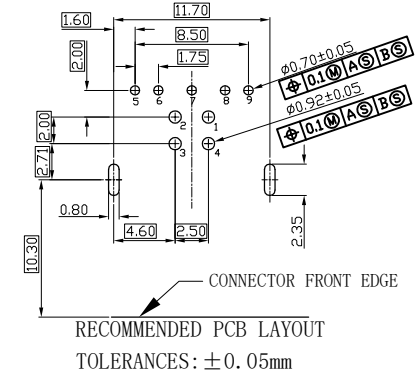
- 2.1 CONTACT RESISTANCE: 30mΩ MAXIMUM
- 2.2 CONTACT CURRENT RATING: 1.5A
- 2.3 DIELECTRIC WITHSTANDING VOLTAGE: 100VR. M. S. Δ
- 2.4 INSULATION RESISTANCE 100 MEGOHMS MIN Δ
- 2.5 OPERATING TEMPERATURE: -40° C ~ 85° C

3. MECHANICAL CHARACTERISTICS:

- 3.1 MATING FORCE: 3.57kg MAX
- 3.2 UNMATED FORCE: 1.02kg MIN INITIAL/0.82kg MIN AFTER TEST.
- 3.3 DURABILITY: MANDATORY: 5,000 CYCLES Δ

4. PLATING

- 4.1 TERMINAL: (1~30)u" Au ON CONTACT AREA, 80u" MIN. MATTE-Tin ON SOLDER TAILS 50u" MIN UNDER PLATING NICKEL ALL OVER
- 4.2 SHELL: 50u" MIN. NICEL UNDER PLATING OVER ALL
5. "▼" FOR MAJOR DIM.
6. "⊗" FOR FAI DIM.
7. "X" SHOWS CPK MEASUREMENT POINT.



PART NO. INFORMATION

U03-B F X A X X -0001

- PORT TYPE
A: TYPE A
- GENDER
F: FEMALE
M: MALE
- CONTACT PLATED
1: GOLD FLASH
2: GOLD 3U"
3: GOLD 5U"
4: GOLD 10U"
5: GOLD 15U"
6: GOLD 30U"
- PACKAGE
T: TRAY R: TAPE REEL
- HOUSING COLOR
2: WHITE
5: BLACK
9: BLUE
- HOUSING MATERIAL
A: LCP B: PBT
C: PA9T D: PA6T
E: PA46 F: PA66

Pin NUMBER	SIGNAL NAME
1	VBUS
2	D-
3	D+
4	GND
5	StdB_SSTX-
6	StdB_SSTX+
7	GND_DRAIN
8	StdB_SSRX-
9	StdB_SSRX+
Shell	Shield

Bestcreate Technology Limited

TOLERANCES UNLESS OTHERWISE SPECIFIED:

X.	± 0.30	X.*	± 3*
.X	± 0.20	.X*	± 2*
.XX	± 0.15	.XX*	± 1*

Website: www.bsc-elec.com
E-mail: bestcreate@bsc-elec.com

DESIGN: I. L. DATE: 2017. 3. 1

CHECKED: C. W. DATE: 2017. 3. 1

APPROVED: C. W. DATE: 2017. 3. 1

TITLE: USB3.0 B FEMALE 90° DIP TYPE

MATERIAL:	PART NO: U03-BFXAXX-0001	SIZE: A4
FINISH:	DWG NO: U03-BFXAXX-0001	SHEET: 1 OF 1

REV: A UNIT mm SCALE 1=1 QUALITY SYMBOLS