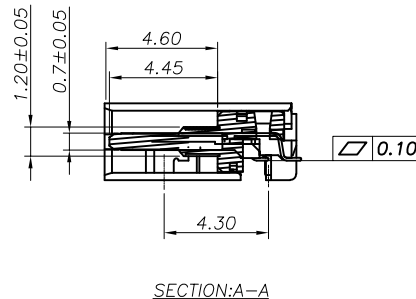
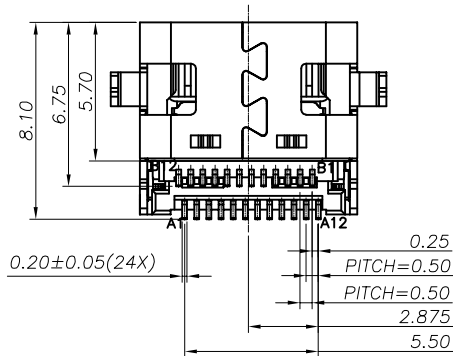
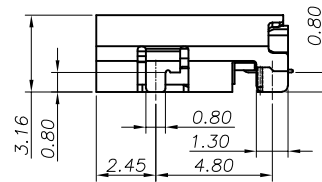
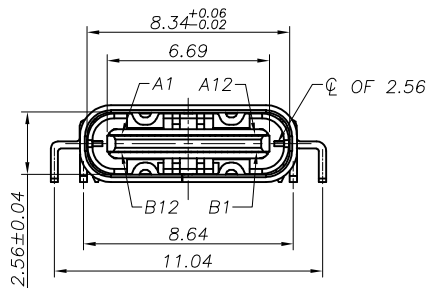
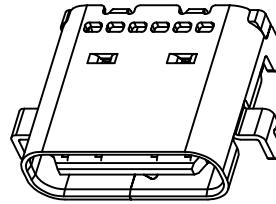
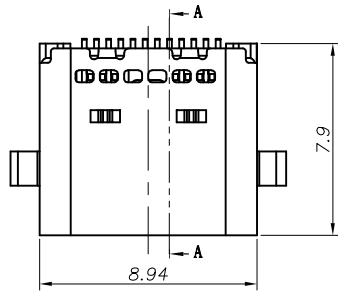


RoHS Compliant

REVISIONS			
REV.	DESCRIPTION	DATE	DESIGN



NOTE:  
 1.MATERIAL SPECIFICATION:  
 1.HOUSING:HIGH TEMPERATURE RESISTANT PLASTIC,UL94 V-0.  
 2.CONTACTS:COPPER ALLOY  
 3.MID PLATE: STAINLESS STEEL  
 4.FRONT SHELL: STAINLESS STEEL  
 5.EMI PLATE: STAINLESS STEEL  
 2.PLATING SPECIFICATION:  
 2-1.CONTACTS:  
 Ni 50u" MIN. UNDER PLATED OVER ALL.  
 Au PLATED ON THE FUNCTIONAL AREA OF CONTACT.  
 (GOLD PLATING THICKNESS FOLLOW THE P/N)  
 PLATING SPECIFICATIONS OF THE SOLDER AREA FOLLOW THE P/N  
 2-2.FRONT SHELL:  
 Ni 30u" MIN. UNDER PLATED OVER ALL.  
 2-3.EMI PLATE:  
 NO PLATE  
 2-4.MID PLATE:  
 Ni 30u" MIN. UNDER PLATED OVER ALL.  
 Sn 80u"MIN. PLATED OVER ALL  
 3.MECHANICAL PERFORMANCE,  
 3-1.INSERTION FORCE: 0.5~2.0kgf.  
 3-2.REMOVAL FORCE: 0.8kgf~2.0kgf.  
 3-3.DURABILITY: 10000 CYCLES.  
 4.ELECTRICAL PERFORMANCE,  
 4-1. CURRENT RATING:5.0A  
 VOLTAGE RATING:5.0V  
 4-2. LLCR:  
 VBUS & GND PINS AND OTHER PINS: 40mΩ/PIN MAX.  
 SHIELD: 50mΩ/MAX.  
 LLCR MAX. CHANGE OF ALL PINS: 10mΩ.  
 4-3.INSULATION RESISTANCE: 100MΩ MIN  
 4-4.DIELECTRIC WITHSTAND VOLTAGE,AC 100V FOR 1 MINUTE.  
 5. ENVIRONMENTAL PERFORMANCE:  
 OPERATING TEMPERATURE: -25°C~+85°C.  
 6.IR REFLOW:  
 THE PEAK TEMPERATURE ON THE BOARD SHALL  
 BE MAINTAINED FOR 10 SECONDS AT 260°C.

PART NO. INFORMATION  
**U06-C F X X 5 R - 008 - V1**

PORT TYPE  
 C: TYPE C

GENDER  
 F: FEMALE  
 M: MALE

CONTACT PLATED  
 1: GOLD FLASH  
 2: GOLD 3U"  
 3: GOLD 5U"  
 4: GOLD 10U"  
 5: GOLD 15U"  
 6: GOLD 30U"

PACKAGE  
 R: TAPE REEL

HOUSING COLOR  
 2: WHITE  
 5: BLACK  
 9: NATURE

HOUSING MATERIAL  
 A: LCP B: PBT  
 C: PA9T D: PA6T  
 E: PA46 F: PA66

**Bestcreate Technology Limited**

TOLERANCES UNLESS OTHERWISE SPECIFIED:

X.	± 0.30	X.'	± 10'
.X	± 0.20	.X'	± 8'
.XX	± 0.10	.XX'	± 5'

REV: A UNIT mm SCALE 1=1 QUALITY SYMBOLS

Website: www.bsc-elec.com  
 E-mail: bestcreate@bsc-elec.com

DESIGN: I.L DATE: 2017. 3. 1

CHECKED: C.W DATE: 2017. 3. 1

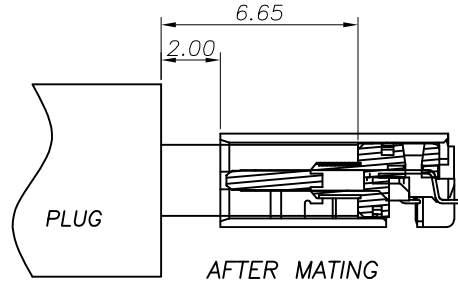
APPROVED: C.W DATE: 2017. 3. 1

TITLE: **USB CF 24PIN SMT TYPE  
 MID-MOUNT 0.8**

MATERILA:	PART NO: U06-CFXX5R-008-V1	SIZE: A4
FINSH:	DWG NO: U06-CFXX5R-008-V1	SHEET: 1 OF 3

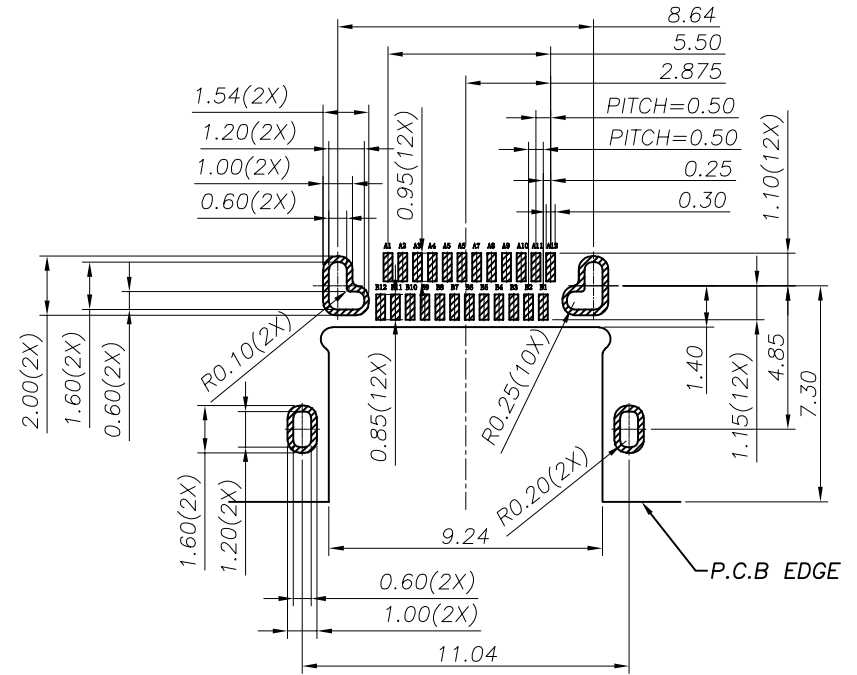
RoHS Compliant

REVISIONS			
REV.	DESCRIPTION	DATE	DESIGN



USB TYPE-C PIN ASSIGNMENTS

PIN NUMBER	SIGNAL NAME	PIN NUMBER	SIGNAL NAME
A1	GND	B12	GND
A2	SSTXp1	B11	SSRXp1
A3	SSTXn1	B10	SSRXn1
A4	Vbus	B9	Vbus
A5	CC1	B8	SBU2
A6	Dp1	B7	Dn2
A7	Dn1	B6	Dp2
A8	SBU1	B5	CC2
A9	VBUS	B4	Vbus
A10	SSRXn2	B3	SSTXn2
A11	SSRXp2	B2	SSTXp2
A12	GND	B1	GND



RECOMMENDED PCB LAYOUT(TOP VIEW)  
THICKNESS 0.60MM;DEFAULT TOLERANCE:±0.05

**Bestcreate Technology Limited**

TOLERANCES UNLESS OTHERWISE SPECIFIED:

X.	± 0.30	X.°	± 10°
.X	± 0.20	.X°	± 8°
.XX	± 0.10	.XX°	± 5°

Website: [www.bsc-elec.com](http://www.bsc-elec.com)

E-mail: [bestcreate@bsc-elec.com](mailto:bestcreate@bsc-elec.com)

DESIGN: I. L DATE: 2017. 3. 1

CHECKED: C. W DATE: 2017. 3. 1

APPROVED: C. W DATE: 2017. 3. 1

TITLE: **USB CF 24PIN SMT TYPE  
MID-MOUNT 0.8**

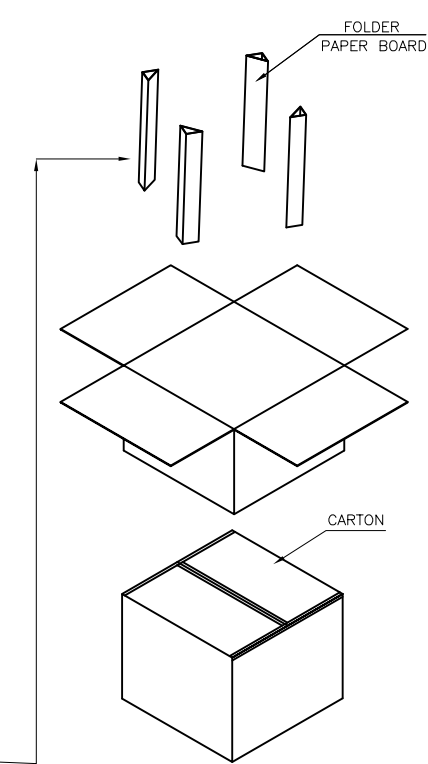
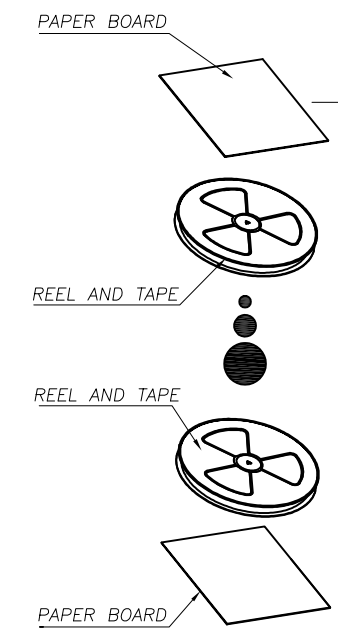
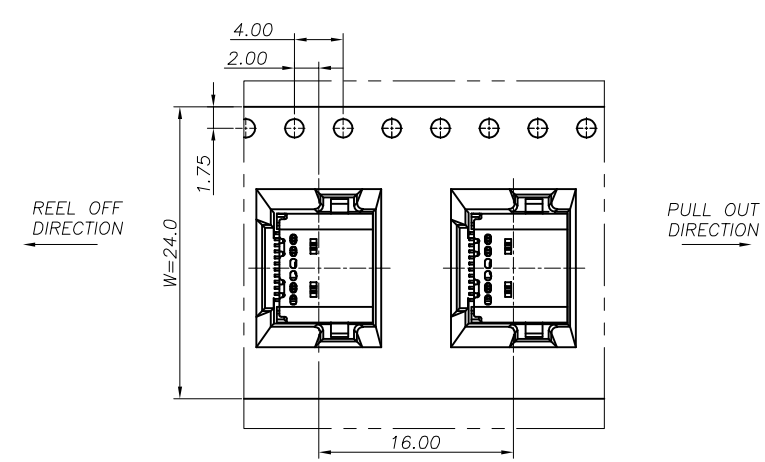
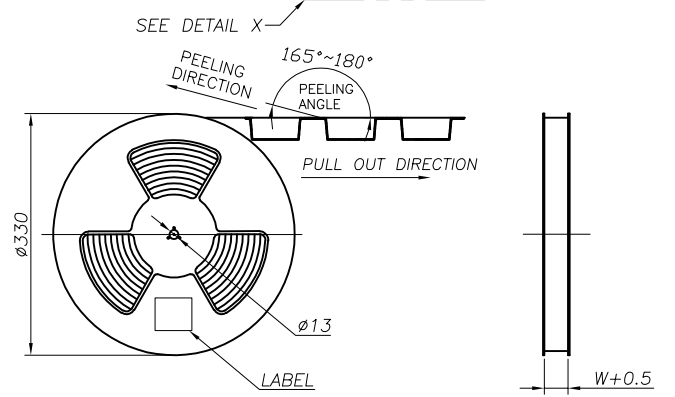
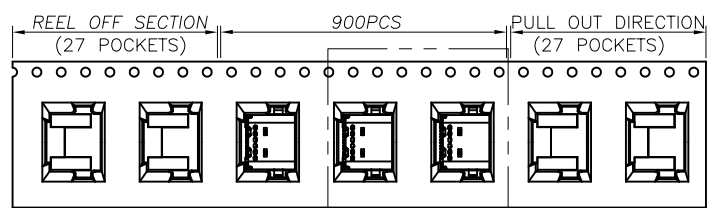
MATERILA: PART NO: U06-CFXX5R-008-V1 SIZE: A4

FINSH: DWG NO: U06-CFXX5R-008-V1 SHEET: 2 OF 3

REV: A UNIT mm SCALE 1=1 QUALITY SYMBOLS

RoHS Compliant

REVISIONS			
REV.	DESCRIPTION	DATE	DESIGN



	REEL	CARTON
CONNECTOR (PCS)	900	9000

**Bestcreate Technology Limited**

TOLERANCES UNLESS OTHERWISE SPECIFIED:			
X.	$\pm 0.30$	X.′	$\pm 10'$
.X	$\pm 0.20$	.X*	$\pm 8'$
.XX	$\pm 0.10$	.XX*	$\pm 5'$
Website: <a href="http://www.bsc-elec.com">www.bsc-elec.com</a>			
E-mail: <a href="mailto:bestcreate@bsc-elec.com">bestcreate@bsc-elec.com</a>			

DESIGN: I. L	DATE: 2017. 3. 1
CHECKED: C. W	DATE: 2017. 3. 1
APPROVED: C. W	DATE: 2017. 3. 1

TITLE: <b>USB CF 24PIN SMT TYPE MID-MOUNT 0.8</b>		
MATERILA:	PART NO: U06-CFXX5R-008-V1	SIZE: A4
FINSH:	DWG NO: U06-CFXX5R-008-V1	SHEET: 3 OF 3

REV: A	UNIT: mm	SCALE: 1=1	QUALITY SYMBOLS:
--------	----------	------------	------------------