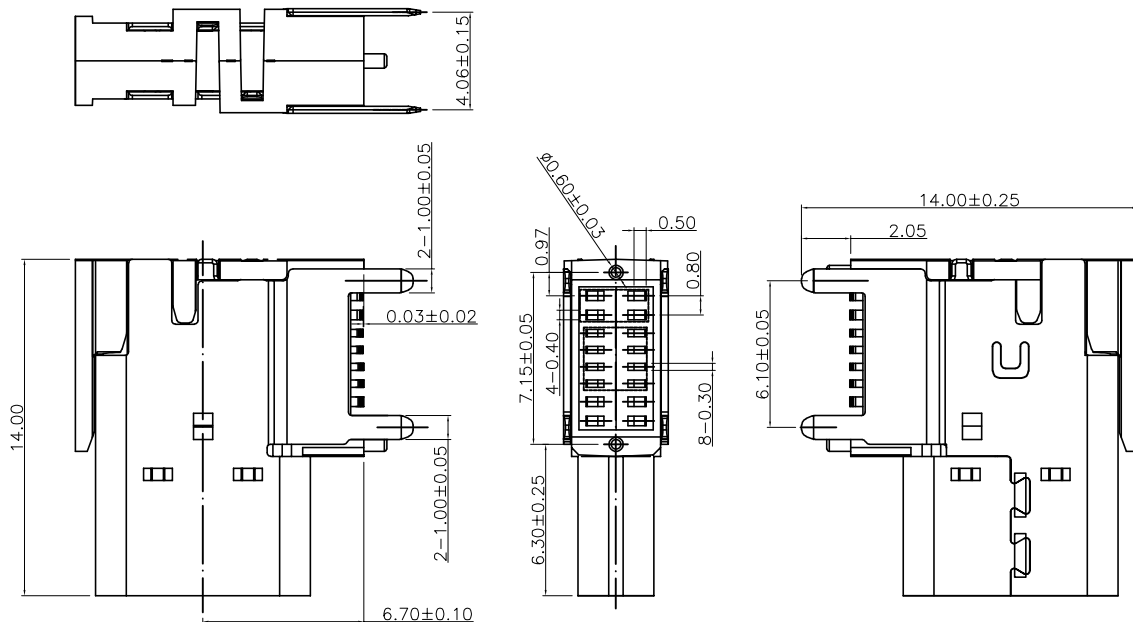


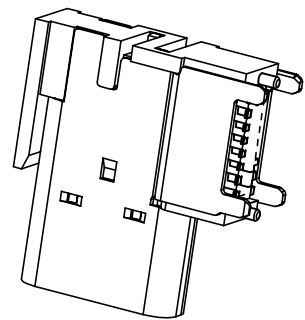
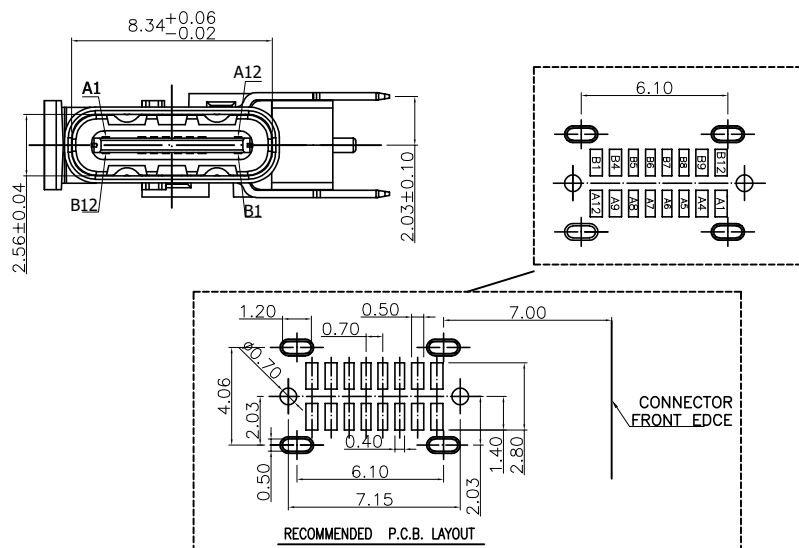
RoHS Compliant

REVISIONS			
REV.	DESCRIPTION	DATE	DESIGN



特性:

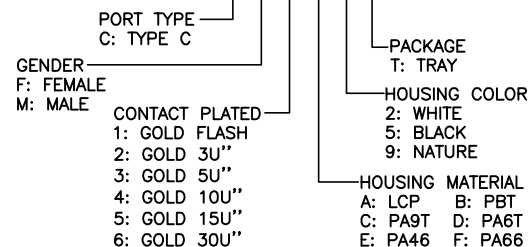
- 一、电气性能: ELECTRICAL
 - 1. 额定电流: 3.0A
 - 2. 接触阻抗: 30 MILLIOHMS MAX
 - 3. 耐电压: 150V AC / 1 mA MAX
 - 4. 绝缘阻抗: 150V DC/100 MEGA OHMS MIN
- 二、机械性能:
 - 1. 插入力: 5-20N
 - 2. 拨出力: 8-20N
 - 3. 使用寿命: 10000次
- 三、材料: MATERIAL
 - 1. 塑胶: LCP+30%G.F黑色 UL94V-0
 - 2. 端子: C2680 T=0.15MM
 - 3. 外壳: SUS201 T=0.30MM
 - 4. 卡勾: SUS201 T=0.12MM
- 四、电镀: FINISH
 - 1. 端子: 接触点镀金1U"
PIN脚焊接区域测金.
 - 2. 外壳: 镀哑镍40U"MIN (盐雾24H)
- 五、电镀品需做粘锡测试: 粘锡面积达到95%以上.
- 六、SMT回流焊 (峰值260° C±5° C) 不能起泡、熔胶、变色不良 (变形在公差范围以内)
- 七、工作温度: -55° C~+85° C
- 八、盐雾测试: 通过24H在浓度为5±1%盐水的盐雾测试无生锈现象;
- 九、管制重点尺寸.



A1	GND	B12	GND
A2		B11	
A3		B10	
A4	VBUS	B9	VBUS
A5	CC1	B8	SBU2
A6	DP1	B7	DN2
A7	DN1	B6	DP2
A8	SBU1	B5	CC2
A9	VBUS	B4	VBUS
A10		B3	
A11		B2	
A12	GND	B1	GND

PART NO. INFORMATION

U06-C F 1 X 5 T - 030



Bestcreate Technology Limited

TOLERANCES UNLESS OTHERWISE SPECIFIED:

X.	±	0.50	X'	±	3'
.X	±	0.25	.X'	±	2'
.XX	±	0.15	.XX'	±	1'

Tel/Whatsapp:0086-13712299763
Skype: belle.wu3340

DESIGN: I. L DATE: 2017. 3. 1

CHECKED: C. W DATE: 2017. 3. 1

APPROVED: C. W DATE: 2017. 3. 1

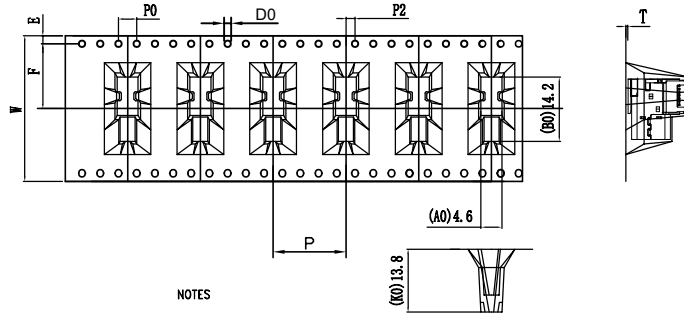
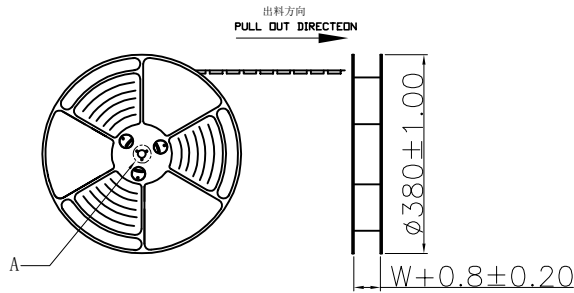
TITLE: USB TYPE CF 16PIN
侧插SMT CH=6.70

MATERIA:	PART NO:	SIZE:
FINSH:	DWG NO:	A4
	U06-CF1X5T-030	
	U06-CF1X5T-030	

REV: A	UNIT mm	SCALE 1=1	QUALITY SYMBOLS
--------	---------	-----------	-----------------

RoHS Compliant

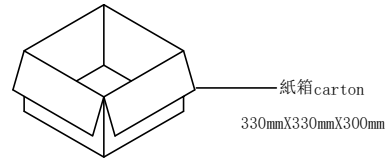
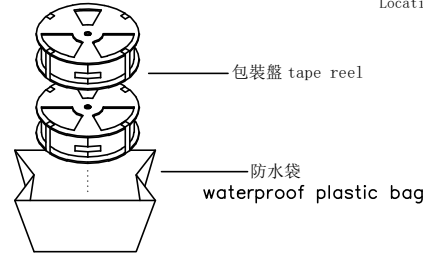
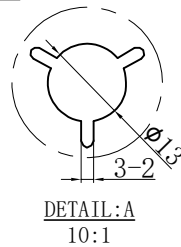
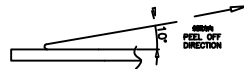
REVISIONS			
REV.	DESCRIPTION	DATE	DESIGN



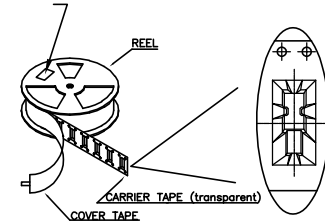
NOTES

1. 帶子引導長度
LEAD TAPE LENGTH
出料方向
PULL OUT DIRECTEON

2. 上帶 剝力力為: $0.1 \sim 1.3N$ (10.2gf~130gf)
PEELING OFF FORCE OF TOP TAPE: $0.1 \sim 1.3N$ (10.2gf~130gf)
出貨運輸過程中一定注意:
THIS REQUIREMENT SHOULD BE APPLIED AT SHIPMENT;
卷帶在運輸過程中不能散開
PEELING OFF SHOULD NOT BE ALLOWED DURING TRANSPORTATION



at small positioning hole of the carrier tape side.
標籤黏貼處 (朝捲裝包材的小定位孔一側)
Location of label sticking (label)



NOTE:

1. 每捲包裝數量及每箱裝箱數量如左下表格。
Packing q'ty of each reel & carton as below table shown.
2. 將裝滿產品的卷盤放入紙箱並以膠帶封口
Put reels in the carton and use adhesive tape to seal up.

卷帶	規格: $\phi 330mm$	包裝數量: 400PCS
紙箱	規格: 330mm X 330mm X 300mm	包裝數量: 8盘 / 3200PCS

W	32±0.3
F	14.2±0.1
SO	±0.1
T	0.50±0.1
E	1.75±0.1
P	16.0±0.1
P0	4±0.1
P2	2±0.15
AO	4.60±0.1
BO	14.2±0.1
KO	13.8±0.1
DO	1.50±0.1

Bestcreate Technology Limited

TOLERANCES UNLESS OTHERWISE SPECIFIED:

X.	± 0.50	X.*	± 3'
.X	± 0.25	.X*	± 2'
.XX	± 0.15	.XX*	± 1'

Tel/Whatsapp: 0086-13712299763
Skype: belle.wu3340

DESIGN: I. L DATE: 2017. 3. 1

CHECKED: C. W DATE: 2017. 3. 1

APPROVED: C. W DATE: 2017. 3. 1

TITLE: USB TYPE CF 16PIN
側插SMT CH=6.70

MATERILA:	PART NO: U06-CF1X5T-030	SIZE: A4
FINSH:	DWG NO: U06-CF1X5T-030	

REV: A	UNIT mm	SCALE 1=1	QUALITY SYMBOLS
--------	---------	-----------	-----------------