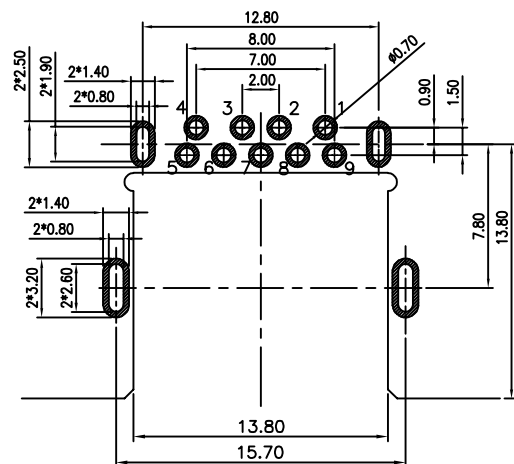
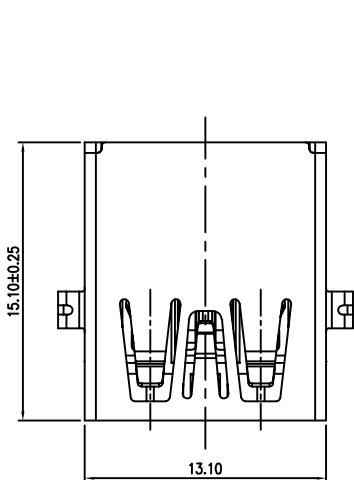
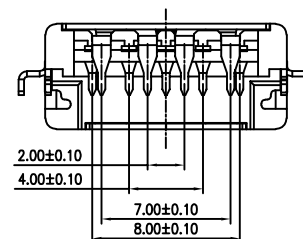
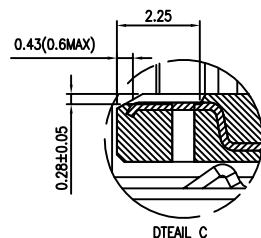
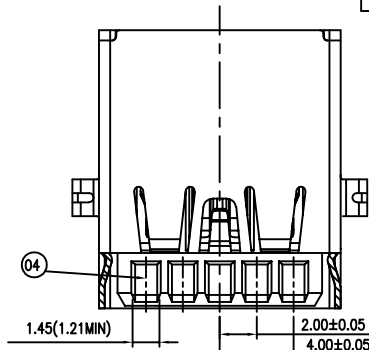


RoHS Compliant

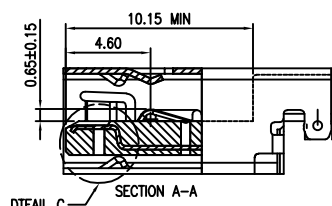
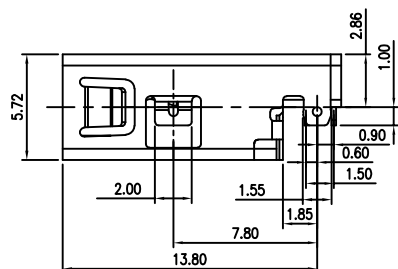
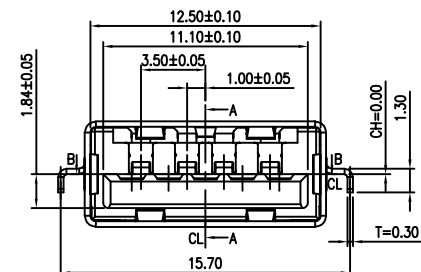
REVISIONS			
REV.	DESCRIPTION	DATE	DESIGN



TOLERANCE: ±0.05, THICKNESS: 1.2mm
RECOMMENDED PCB LAYOUT
(TOP VIEW)

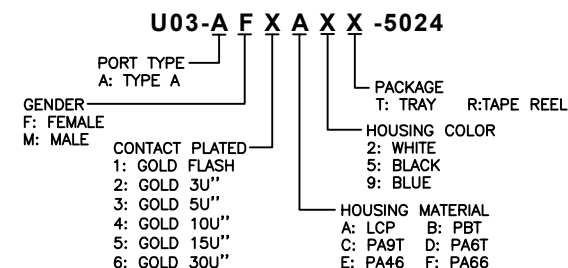


- NOTE:
- MATERIAL:
 - INSULATOR: PA 9T, UL 94 V-0; COLOR BLACK
 - 4PIN CONTACT: C5191(T=0.25mm)
 - 5PIN CONTACT: C2680(T=0.20mm)
 - SHELL: SUS201(T=0.30mm)
 - ELECTRICAL CHARACTERISTICS:
 - Current Rating: 1.8
 - Insulation Resistance: 100MΩ Min
 - Contact Resistance: 30mΩ Max
 - Dielectric Withstanding Voltage: 500V AC
 - OPERATING TEMPERATURE: -40°C ~ 85°C
 - MECHANICAL CHARACTERISTICS:
 - MATING FORCE: 35 N Max
 - UNMATED FORCE: 10 N Min INITIAL; 8 N Min AFTER TEST
 - DURABILITY: 5,000 CYCLES
 - PLATING SPECIFICATION:
 - CONTACTS: Ni 50u" MIN. UNDER PLATED, GOLD FLASH PLATED ON THE MATING AREA OF CONTACT.
MATTE Sn 100u" MIN. PLATED ON THE SOLDER TALL.
 - FRONT SHELL: Ni 50u" MIN. UNDER PLATED OVER ALL.
 - Salt Spray 24H



Pin #	SIGNAL NAME	DESCRIPTION	MATING SEQUENCE
1	VBUS	POWER	SECOND
2	D-	USB 2.0 DIFFERENTIAL PAIR	THIRD
3	D+	DIFFERENTIAL PAIR	
4	GND	GROUND FOR POWER RETURN	SECOND
5	StdA_SSRX-	SUPERSPEED RECEIVER DIFFERENTIAL PAIR	LAST
6	StdA_SSRX+	DIFFERENTIAL PAIR	
7	GND_DRAIN	GROUND FOR SIGNAL RETURN	
8	StdA_SSTX-	SUPERSPEED TRANSMITTER DIFFERENTIAL PAIR	
9	StdA_SSTX+	DIFFERENTIAL PAIR	
Shell	Shield	CONNECTOR METAL SHELL	FRIST

PART NO. INFORMATION



Bestcreate Technology Limited

TOLERANCES UNLESS OTHERWISE SPECIFIED:

X.	± 0.30	X.*	± 3*
.X	± 0.20	.X*	± 2*
.XX	± 0.15	.XX*	± 1*

Website: www.bsc-elec.com

E-mail: bestcreate@bsc-elec.com

DESIGN: I. L DATE: 2017. 3. 1

CHECKED: C. W DATE: 2017. 3. 1

APPROVED: C. W DATE: 2017. 3. 1

TITLE: USB 3.1 Gen2 (10Gps)TYPE A 9P H=5.72mm
CH=-0.00mm REC, RVS, DIP TYPE

MATERILA: PART NO: U03-AFXAXX-5024 SIZE: A4

FINSH: DWG NO: U03-AFXAXX-5024 SHEET: 1 OF 2

REV: A UNIT mm SCALE 1=1 QUALITY SYMBOLS