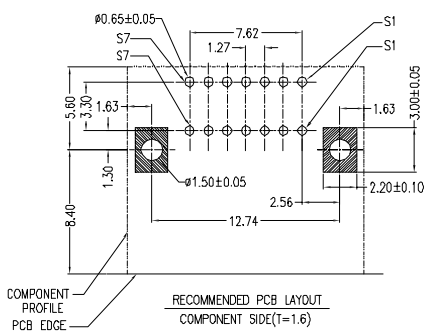
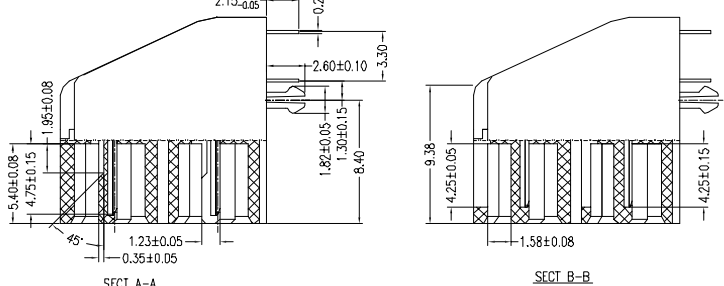
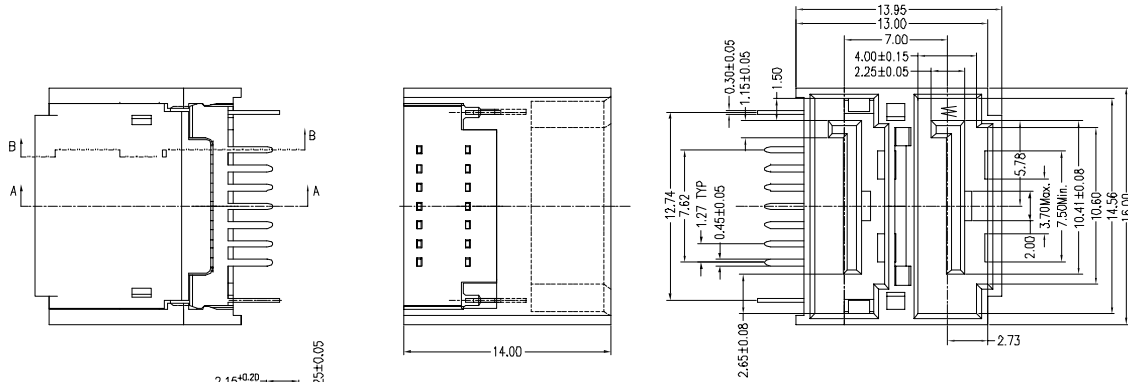


RoHS Compliant

REVISIONS			
REV.	DESCRIPTION	DATE	DESIGN



Signal Segment	
Name	Type
S1	GND
S2	A+
S3	A-
S4	GND
S5	B-
S6	B+
S7	GND

**NOTES:**

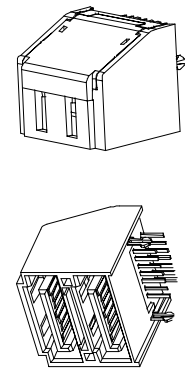
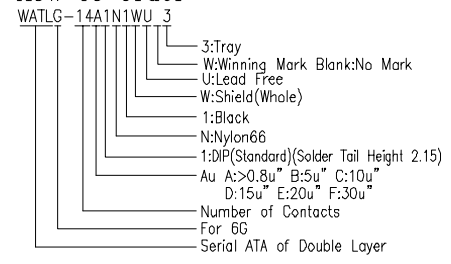
**\*Material**  
 Housing: Nylon66+30%G.F, UL 94V-0 Rated, Color:Black.  
 Contact: Brass.  
 Plating: Au plating on contact area,Sn(100u" Min.)plating on solder tail, Ni(40u" Min.)underplating overall.  
 Harpoon: Brass.  
 Plating: Sn(100u" Min.)plating over Ni(40u" Min.).

**\*Electrical Specification**  
 Operation Voltage: 100V AC Max.  
 Current Rating: 1.5 Ampere per contact.  
 Contact Resistance: 30mΩ Max.  
 Insulation Resistance: 1000MΩ Min.  
 Dielectric Withstanding Voltage: 500V AC.

**\*Mechanical Performance**  
 Insertion Force: 45N Max.  
 Withdrawal Force: 10N Min.  
 Durability: 500 Cycles.

**\*Environmental**  
 Operating Temperature: -55°C to +85°C.

**\*How To Order**



**Bestcreate Technology Limited**

TOLERANCES UNLESS OTHERWISE SPECIFIED:  

.X	± 0.38	X.*	± 3"
.XX	± 0.25	.X*	± 2"
.XXX	± 0.20	.XX*	± 1"

 Website:www.bsc-elec.com  
 Email:bestcreate@bsc-elec.com

DESIGN: I. L DATE: 2017. 3. 1  
 CHECKED: DATE:  
 C. W 2017. 3. 1  
 APPROVED: DATE:  
 C. W 2017. 3. 1

TITLE: Serial SATA of Double Layer 14Pins Shield, Standard Two Hole DIP Type(Whole)Male  
 MATERILA: PART NO: WATLG-14A1N1WU3 SIZE: A4  
 FINSH: DWG NO: WATLG-14A1N1WU3

REV: A	UNIT mm	SCALE 1=1	QUALITY SYMBOLS
--------	---------	-----------	-----------------