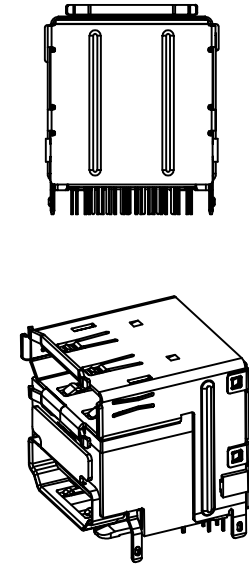
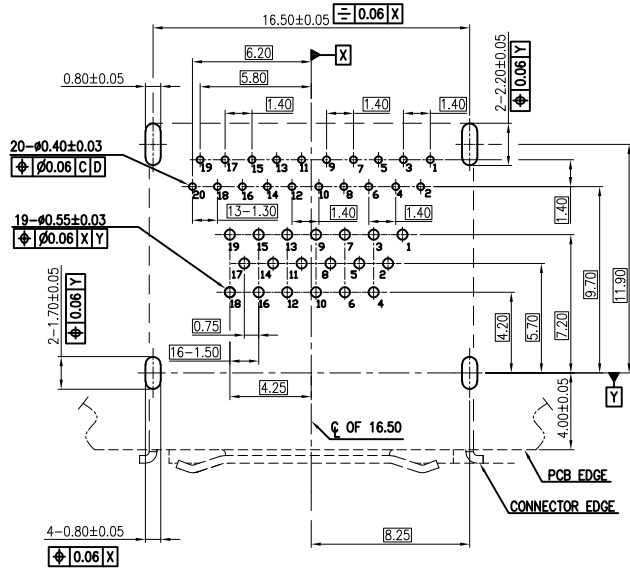
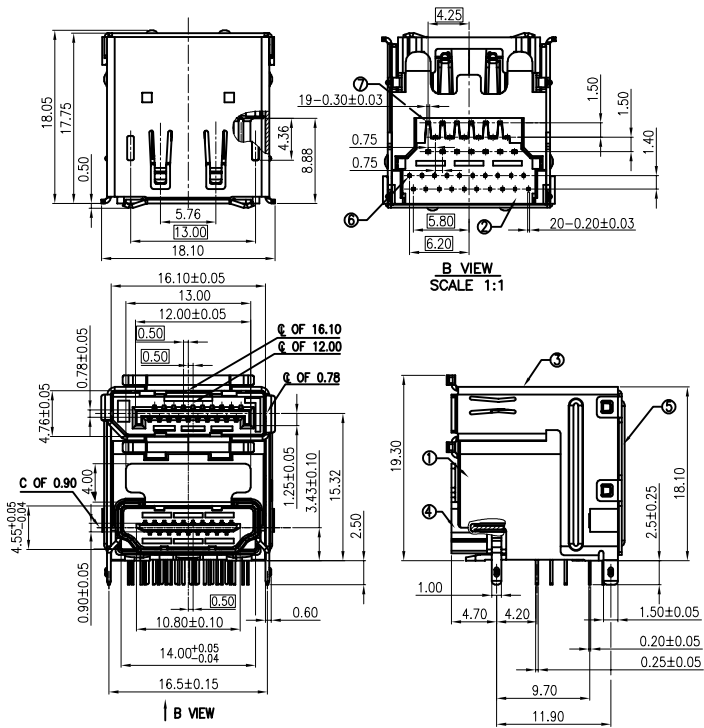


RoHS Compliant

REVISIONS			
REV.	DESCRIPTION	DATE	DESIGN



NOTE:

1. MECHANICAL:

1.1 INSERTION FORCE:

- 1.1.1 HDMI:44.1N MAX
- 1.1.2 DISPLAYPORT:44.1MAX

2.1 WITHDRAWAL FORCE:

- 2.1.1 HDMI:9.8N MIN,39.2N MAX
- 2.1.2 DISPLAYPORT:9.8N MIN,39.2N MAX

2.ELECTRICAL:

2.1 CONTACT CURRENT RATING:

- 2.1.1 HDMI:0.5A MAX
- 2.1.2 DISPLAYPORT:0.5A MAX

2.2 VOLTAGE RATING:

2.2.1 HDMI:40V AC(RMS)

2.2.2 DISPLAYPORT:40V AC(RMS)

2.3 WITHSTANDING VOLTAGE(MATED):

2.3.1 HDMI:300V AC(RMS)

2.3.2 DISPLAYPORT:300V AC(RMS)

2.4 INSULATION RESISTANCE(MATED):

2.4.1 HDMI:150V DC

2.4.2 DISPLAYPORT:150V DC

3. ENVIRONMENTAL:

3.1 OPERATING TEMPERATURE:

- 3.1.1 HDMI:-25° TO +85°
- 3.1.2 DISPLAYPORT:-25° TO +85°

PART NO. INFORMATION

HDDP01- F 1 A 5 T - 001

GENDER:
F: FEMALE
M: MALE

CONTACT PLATED
1: GOLD FLASH
2: GOLD 3U"
3: GOLD 5U"
4: GOLD 10U"
5: GOLD 15U"
6: GOLD 30U"

PACKAGE
R: TAPE REEL T-TRAY

HOUSING COLOR
2: WHITE
5: BLACK
9: NATURE

HOUSING MATERIAL
A: LCP B: PBT
C: PA9T D: PA6T
E: PA46 F: PA66

TABLE A:

ITEM	PART NAME	Q'TY	MATERIALS	NOTES
⑦	HDMI CONTACT	19	COPPER ALLOY	SELECTIVER Au OVER Ni
⑥	DISPLAYPORT CONTACT	20	COPPER ALLOY	SELECTIVER Au OVER Ni
⑤	BACK SHELL	1	STEEL	Cu UNDER PLATING Ni OVER
④	HDMI SHELL	1	COPPER ALLOY	Cu UNDER PLATING Ni OVER
③	DISPLAYPORT SHELL	1	COPPER ALLOY	Cu UNDER PLATING Ni OVER
②	SPACER	1	THERMOPLASTIC	UL94V-0
①	HOUSING	1	THERMOPLASTIC	UL94V-0

Bestcreate Technology Limited

TOLERANCES UNLESS OTHERWISE SPECIFIED:

.X	± 0.35	X.'	± 2'
.XX	± 0.25	.X.'	± 1'
.XXX	± 0.15	.XX'	± 0.5'

Website:www.bsc-elec.com
Email:bestcreate@bsc-elec.com

DESIGN: DATE: 2017. 3. 1

I. L. 2017. 3. 1

CHECKED: DATE: 2017. 3. 1

C. W. 2017. 3. 1

APPROVED: DATE: 2017. 3. 1

TITLE:
**DISPLAYPORT FEMALE +HDMI A FEMALE
CONNECTOR DIP TYPE WITHOUT LOCK PIN**

MATERILA:	PART NO: HDDP01-F1A5T-001	SIZE: A4
FINSH:	DWG NO: HDDP01-F1A5T-001	

REV: A	UNIT mm	SCALE 1=1	QUALITY SYMBOLS
--------	---------	-----------	-----------------