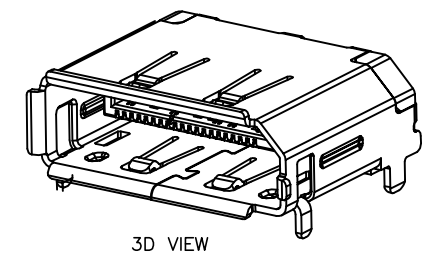
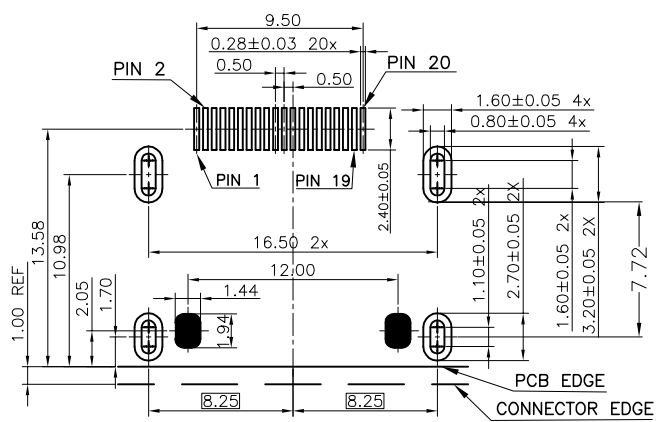
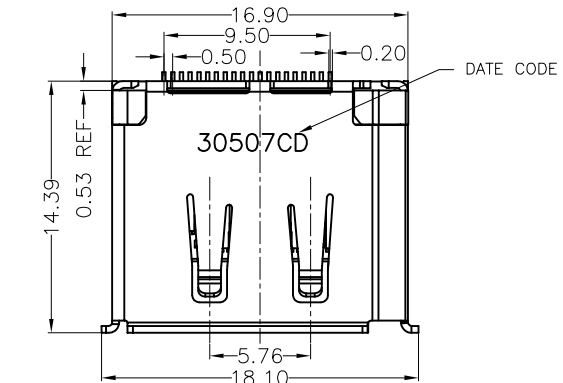
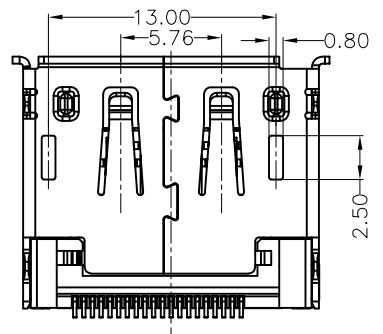
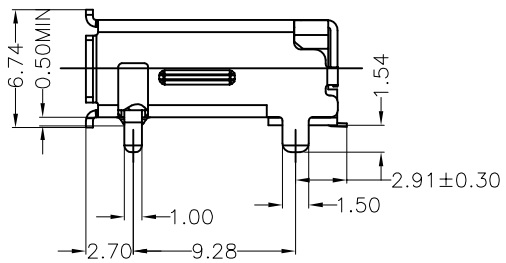
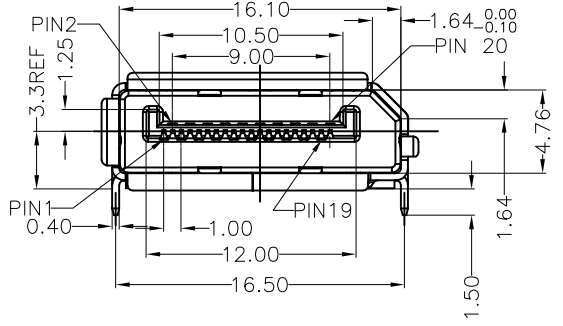


RoHS Compliant

REVISIONS			
REV.	DESCRIPTION	DATE	DESIGN



3D VIEW



- NOTE:
- MECHANICAL:
 - 1.1 INSERTION FORCE: 4.5KgF MAX
 - 1.2 WITHDRAW FORCE: 1KgF-4KgF , AFTER 5000 CYCLE WITHDRAW FORCE: 0.3KGf-4KGf ,
 - ELECTRICAL:
 - 2.1 CONTACT CURRENT RATING: 0.5A MAX
 - 2.2 VOLTAGE RATING: 40V AC (RMS)
 - 2.3 DIELECTRIC WITHSTANDING VOLTAGE: 500 V AC FOR 1 MINUTE
 - 2.4 INSULATION RESISTANCE :100 MEGAOHMS MIN
 - 2.5 CONTACT RESISTANCE: 30 MILLIOHMS MAX
 - ENVIRONMENTAL:
 - 3.1 OPERATING TEMPERATURE : -25--+85°C
 - 3.2 SALT SPRAY: 48H

PART NO. INFORMATION

DP09- F X X 5 R - 008

GENDER
F: FEMALE
M: MALE

CONTACT PLATED
1: GOLD FLASH
2: GOLD 3U''
3: GOLD 5U''
4: GOLD 10U''
5: GOLD 15U''
6: GOLD 30U''

PACKAGE
R: TAPE REEL T: TRAY
HOUSING COLOR
2: WHITE
5: BLACK
9: NATURE
HOUSING MATERIAL
A: LCP B: PBT
C: PA9T D: PA6T
E: PA46 F: PA66

20	C2680 T:0.20mm	CONTACT AREA:GOLD FLASH,SOLDER TAIL: MATTED TIN	CONTACT	③
1	LCP E130I UL94V-0	COLOR: BLACK	HOUSING	②
1	C2680 T: 0.4mm	PLATED:NICKEL OVER ALL	SHELL	①
QTY'S		FINISHING	PART	ITEM

Bestcreate Technology Limited

TOLERANCES UNLESS OTHERWISE SPECIFIED:

.X	± 0.35	X.*	± 2*
.XX	± 0.25	.X.*	± 1*
.XXX	± 0.15	.XX.*	± 0.5*

Website: www.bsc-elec.com
Email: bestcreate@bsc-elec.com

DESIGN:	I. L	DATE:	2017. 3. 1
CHECKED:	C. W	DATE:	2017. 3. 1
APPROVED:	C. W	DATE:	2017. 3. 1

TITLE: DISPLAYPORT FEMALE CONNECTOR SMT TYPE, R/A		
MATERILA:	PART NO: DP09-FXX5R-008	SIZE: A4
FINSH:	DWG NO: DP09-FXX5R-008	

REV: A	UNIT mm	SCALE 1=1	QUALITY SYMBOLS	
-----------	------------	--------------	-----------------	--