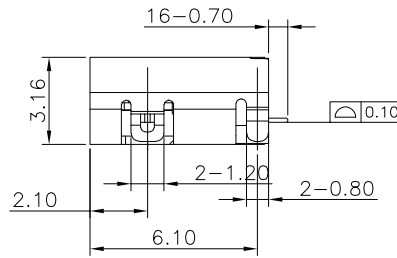
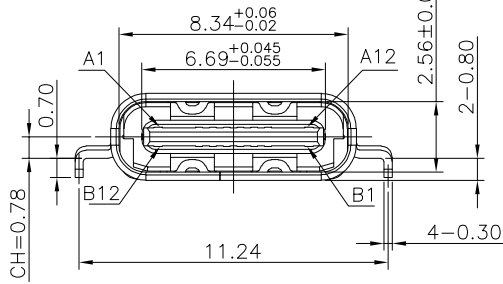
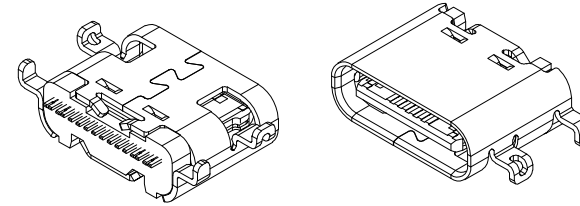
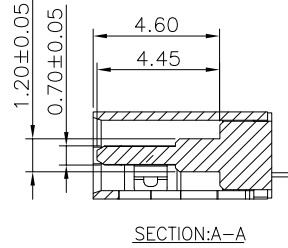
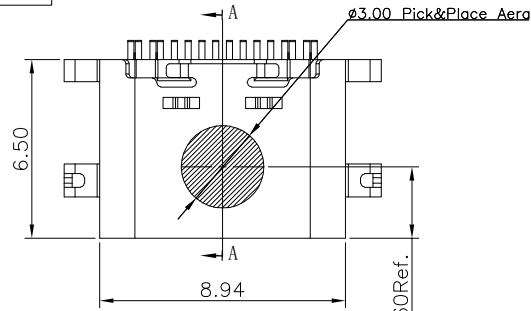


RoHS Compliant

REVISIONS			
REV.	DESCRIPTION	DATE	DESIGN



- 1.MATERIAL SPECIFICATION:  
 1.HOUSING:HIGH TEMPERATURE RESISTANT PLASTIC,UL94 V-0.  
 2.CONTACTS:COPPER ALLOY  
 3.MID PLATE: STAINLESS STEEL  
 4.FRONT SHELL: STAINLESS STEEL
- 2.PLATING SPECIFICATION:  
 2-1.CONTACTS:  
 1u"Au PLATED ON THE FUNCTIONAL AREA OF CONTACT.  
 Ni 30u" MIN. UNDER PLATED OVER ALL.  
 2-2.FRONT SHELL:  
 Ni 30u" MIN. UNDER PLATED OVER ALL.
- 3.MECHANICAL PERFORMANCE,  
 3-1.INSERTION FORCE: 0.5~2.0kgf.  
 3-2.REMOVAL FORCE: 0.8kgf~2.0kgf.  
 3-3.DURABILITY: 10000 CYCLES.
- 4.ELECTRICAL PERFORMANCE,  
 4-1. CURRENT RATING:3A~5A  
 VOLTAGE RATING:5V  
 4-2. LLCR:  
 VBUS & GND PINS AND OTHER PINS: 40mΩ/PIN MAX.  
 SHIELD: 50mΩ/MAX.  
 LLCR MAX. CHANGE OF ALL PINS: 10mΩ.  
 4-3.INSULATION RESISTANCE: 100MΩ MIN  
 4-4.DIELECTRIC WITHSTAND VOLTAGE,AC 100V FOR 1 MINUTE.
5. ENVIRONMENTAL PERFORMANCE:  
 OPERATING TEMPERATURE: -25°C~+85°C.
- 6.IR REFLOW:  
 THE PEAK TEMPERATURE ON THE BOARD SHALL  
 BE MAINTAINED FOR 10 SECONDS AT 260°C.

PART NO. INFORMATION

**U06-C F 1 A 5 R - 019**

PORT TYPE  
C: TYPE C

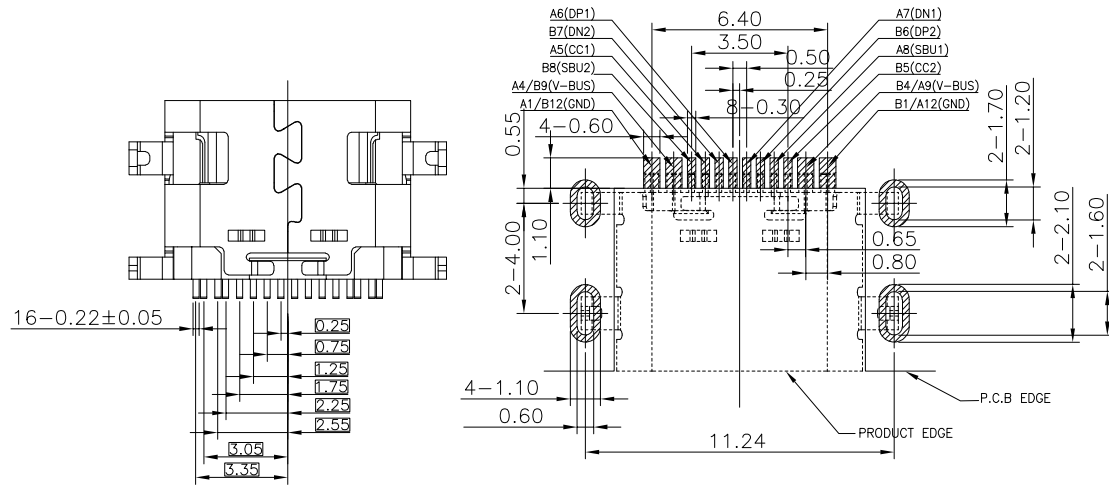
GENDER  
F: FEMALE  
M: MALE

CONTACT PLATED  
1: GOLD FLASH  
2: GOLD 3U"  
3: GOLD 5U"  
4: GOLD 10U"  
5: GOLD 15U"  
6: GOLD 30U"

PACKAGE  
R: TAPE REEL

HOUSING COLOR  
2: WHITE  
5: BLACK  
9: NATURE

HOUSING MATERIAL  
A: LCP B: PBT  
C: PA9T D: PA6T  
E: PA46 F: PA66



RECOMMENDED PCB LAYOUT(THICKNESS:0.80MM)  
 PWB TOLERANCE: ±0.05

**Bestcreate Technology Limited**

TOLERANCES UNLESS OTHERWISE SPECIFIED:

.X	± 0.30	X.*	± 5*
.XX	± 0.20	.X*	± 2*
.XXX	± 0.10	.XX*	± 1*

Website: www.bsc-elec.com  
 E-mail: bestcreate@bsc-elec.com

DESIGN: I.L  
 DATE: 2017.3.1

CHECKED: C.W  
 DATE: 2017.3.1

APPROVED: C.W  
 DATE: 2017.3.1

TITLE: HEIGHTEN TYPE 16P USB 3.1 C  
 FEMALE CONNECTOR SMT, CH=3.5

MATERIALA: PART NO: U06-CF1A5R-019 SIZE: A4

FINSH: DWG NO: U06-CF1A5R-019 SHEET: 1 OF 2

REV: A UNIT mm SCALE 1=1 QUALITY SYMBOLS

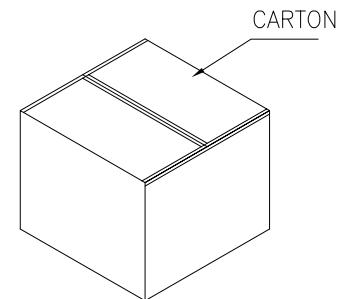
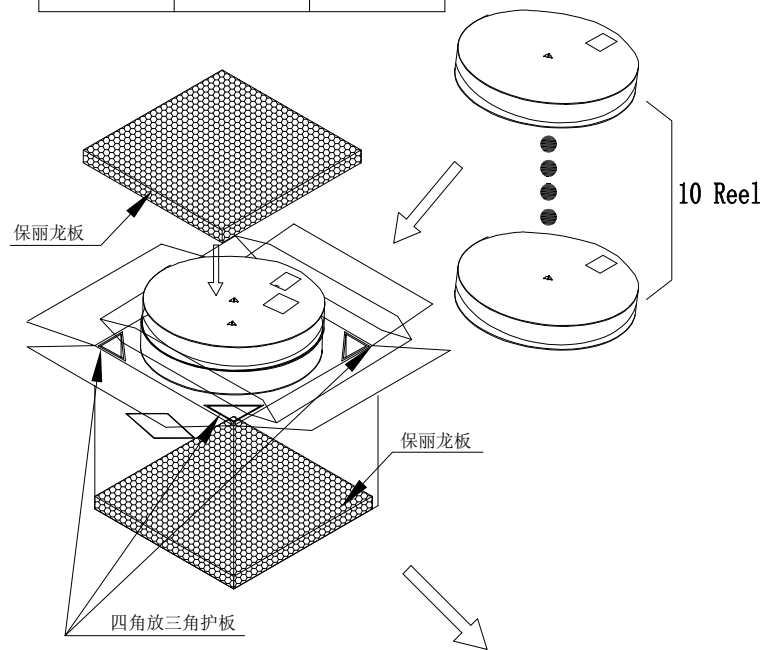
RoHS Compliant

REVISIONS			
REV.	DESCRIPTION	DATE	DESIGN

<TABLE 1> PACKAGING QUANTITY

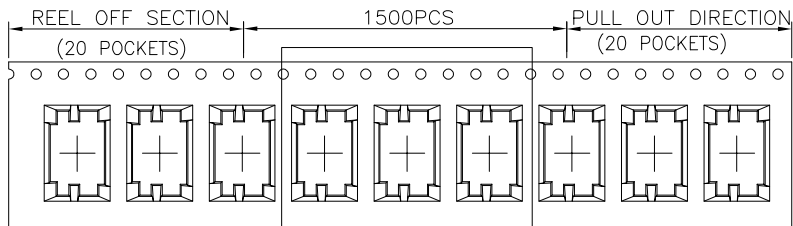
QTY/REEL	REEL/CARTON	QTY/CARTON
1500	10	15000

<图三>

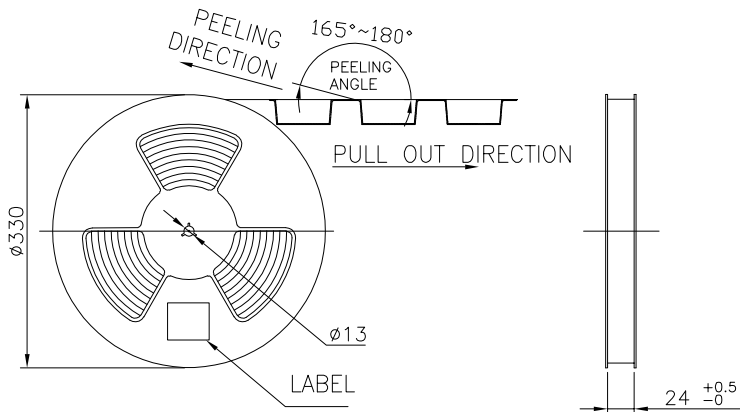
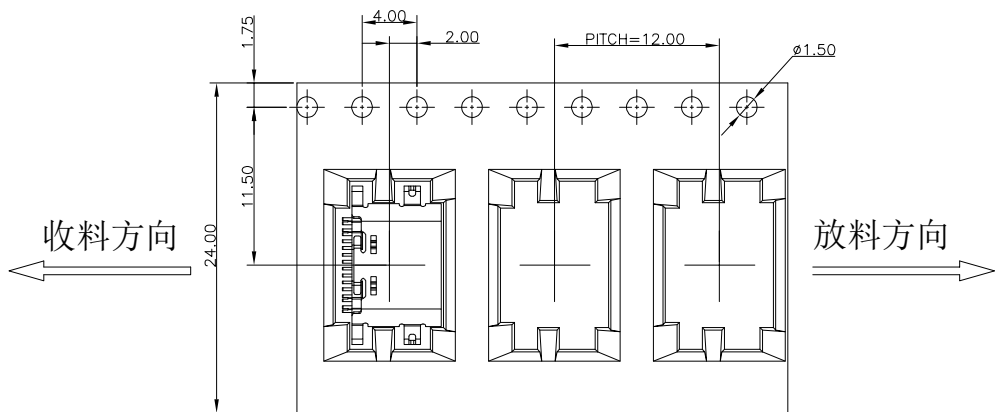


备注:

- 依<图一>示放置产品于Carrier tape中, 每穴放置1PCS产品, Carrier tape卷绕时, 前端和尾端各需预留20PCS空格.
- Cover tape覆盖Carrier tape前端需超出240mmMIN, 后端需留出240mmMIN, 两端都以美文胶贴固.
- 包装机包好后, 在Reel的个等分点上贴胶布, 以防止REEL张开, 每REEL贴1PCS标签, 如<图二>示
- 包装数量见如<TABLE 1>示
- 包装成箱见如<图三>示  
箱底放保丽龙板, 10个 REEL盘, 放入箱内, 四角各放一个三角护板, 最上层再放上保丽龙板.
- 封箱, 在封好的纸箱侧面中间位置贴上出货标签.



SEE DETAIL X



**Bestcreate Technology Limited**

TOLERANCES UNLESS OTHERWISE SPECIFIED:

.X	± 0.30	.X"	± 5"
.XX	± 0.20	.X"	± 2"
.XXX	± 0.10	.XX"	± 1"

Website: www.bsc-elec.com  
E-mail: bestcreate@bsc-elec.com

DESIGN: I.L  
DATE: 2017.3.1

CHECKED: C.W  
DATE: 2017.3.1

APPROVED: C.W  
DATE: 2017.3.1

TITLE: HEIGHTEN TYPE 16P USB 3.1 C FEMALE CONNECTOR SMT, CH=3.5

MATERIAL: PART NO: U06-CF1A5R-019 SIZE: A4

FINISH: DWG NO: U06-CF1A5R-019 SHEET: 2 OF 2

REV: A UNIT mm SCALE 1=1

QUALITY SYMBOLS

