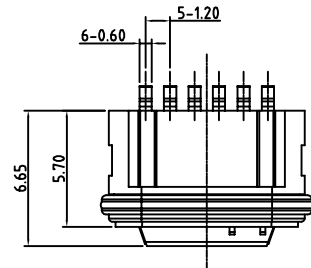
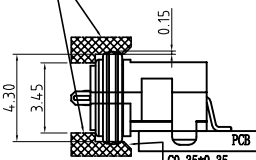


RoHS Compliant

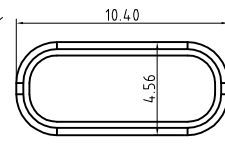
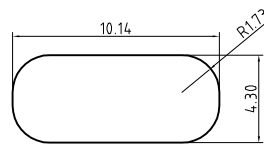
REVISIONS			
REV.	DESCRIPTION	DATE	DESIGN



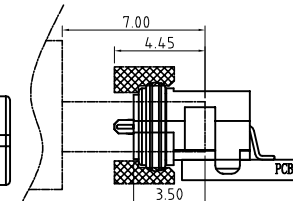
THE GAP BETWEEN SHELL AND O-RING SHOULD BE 0.15 MIN FROM EACH SIDE



← ASSEMBLY DIRECTION  
**ASSEMBLY SCHEMATIC**



O-RING

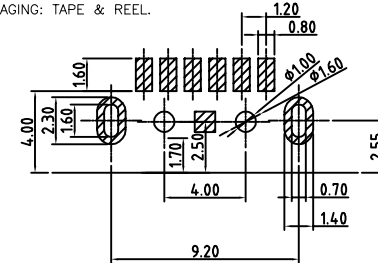
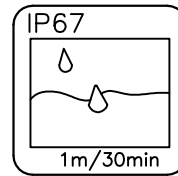
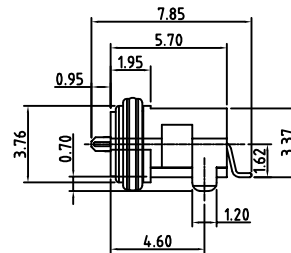
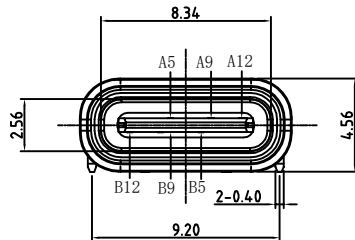


INSERTION DEPTH OF THE PLUG

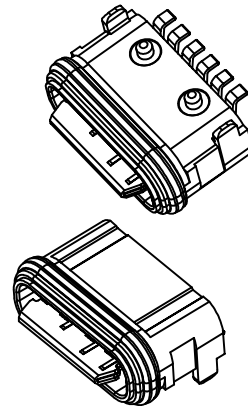
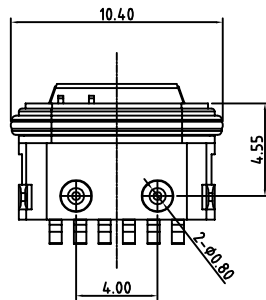
CUT-OUT  
NEED TO ADD LUBRICATING OIL  
WHEN ASSEMBLY THE SHELL

**SPECIFICATIONS:**

- ELECTRICAL CHARACTERISTICS:
  - RATING: 3A;
  - CONTACT RESISTANCE: 30 mΩ MAX.(INITIAL);
  - DIELECTRIC WITHSTANDING: 100V AC MIN.;
  - INSULATION RESISTANCE: 100MΩ MIN.;
- DURABILITY: 5,000 CYCLES MIN.;
- INSERTION FORCE: 5-20N;
- EXTRACTION FORCE: 6-20N;
- WATER PROOFNESS: THIS PRODUCT IS BASED ON IPX7.
- PLUG INTERFACE DIMENSIONS CONFORM TO USB2.0 SPEC.
- PACKAGING: TAPE & REEL.



RECOMMENDED P. C. B LAYOUT  
TOP VIEW (TOLRANCE: ±0.05)

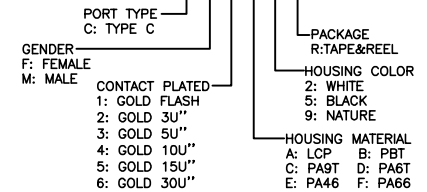


A5	CC1	B12	GND
A9	VBUS	B9	VBUS
A12	GND	B5	CC2
PIN	SIGNAL NAME	PIN	SIGNAL NAME

3	Shell	1	Ni Plating
2	Contact	6	Phosphor bronze Au/Ni Plating T=0.20mm
1	Housing	1	PA10T (G.F30%)
ITEM	PART NAME	Q' TY	FINISH

**PART NO. INFORMATION**

**U06-C F X X 5 X - W056**



**Bestcreate Technology Limited**

TOLERANCES UNLESS OTHERWISE SPECIFIED:

.X	± 0.30	.X'	± 2'
.XX	± 0.10	.X''	± 1'
.XXX	± 0.05	.XX'	± 0.5'

Website: www.bsc-elec.com  
Email: bestcreate@bsc-elec.com

DESIGN: I. L DATE:

CHECKED: C. W DATE:

APPROVED: C. W DATE:

TITLE: IPX7 Waterproof 6P Type CF Connector SMT

MATERILA: PART NO: U06-CFXX5X-W056 SIZE: A4

FINSH: DWG NO: U06-CFXX5X-W056

REV: A UNIT mm SCALE 1=1 QUALITY SYMBOLS