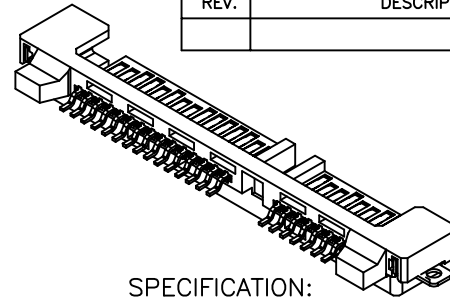


RoHS Compliant

REVISIONS			
REV.	DESCRIPTION	DATE	DESIGN



**SPECIFICATION:**

**1.MATERIAL:**

HOUSING:LCP UL 94V-0, COLOR:BLACK  
 CONTACT:BRASS C2680R-H,T=0.25mm  
 PEG: BRASS C2680R-H,T=0.30mm

**2.FINISH:**

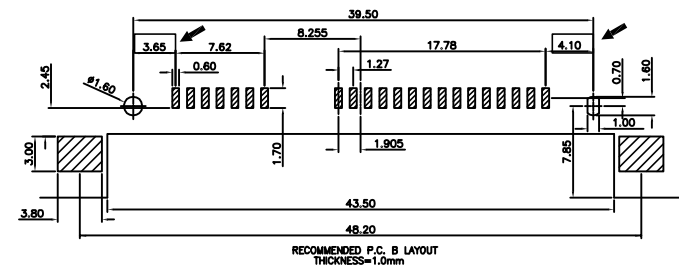
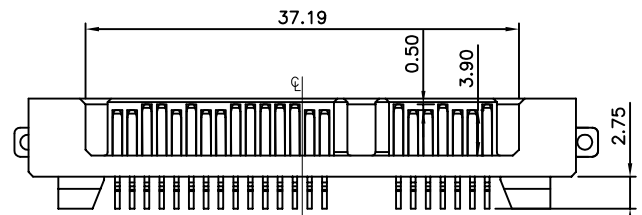
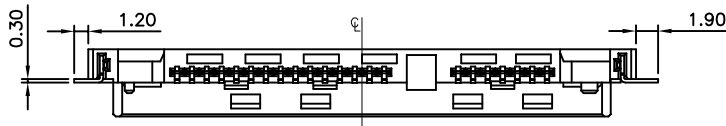
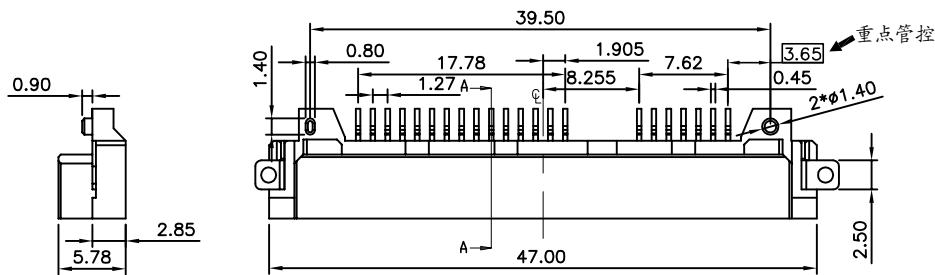
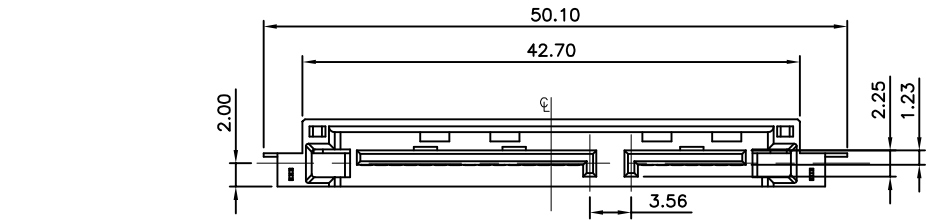
CONTACT:1u"3u"5u"15u" GOLD/TIN PLATING ON CONTACT AREA

100u" MIN. TIN PLATING ON SOLDER TAILS

50u" MIN.NICKEL UNDERPLATING OVER ALL

PEG:100u" MIN. TIN PLATING ON SOLDER TAILS

50u" MIN.NICKEL UNDERPLATING OVER ALL



**PART NO. INFORMATION**

**S715 - M X A 5 T -007**

GENDER  
 F: FEMALE M: MALE

— HOUSING COLOR  
 5: BLACK

CONTACT PLATED  
 1: GOLD FLASH/TIN  
 2: 15U" GOLD/TIN  
 3: 30U" GOLD/TIN

— HOUSING MATERIAL A: LCP

NO.	DESCRIPTION	MATERIAL	COLOR	REMARK
3	Peg	BRASS C2680R-H		Ni/Tin Plated
2	Terminal	BRASS C2680R-H		Gold/Tin Plated
1	Housing	High Temp	Black	UL 94V-0

**Bestcreate Technology Limited**

**TOLERANCES UNLESS OTHERWISE SPECIFIED:**

X.	± 0.35	X.*	± 3*
.X	± 0.25	.X*	± 2*
.XX	± 0.15	.XX*	± 1*

Website: [www.bsc-elec.com](http://www.bsc-elec.com)  
 E-mail: [bestcreate@bsc-elec.com](mailto:bestcreate@bsc-elec.com)

DESIGN: I. L DATE: 2017. 3. 1

CHECKED: C. W DATE: 2017. 3. 1

APPROVED: C. W DATE: 2017. 3. 1

TITLE: SATA 7+15P MALE CONNECTOR FOR 1.0MM PCB

MATERIAL: PART NO: S715-MXA5T-006 SIZE: A4

FINISH: DWG NO: S715-MXA5T-006 SHEET: 1 OF 2

REV:	UNIT	SCALE	QUALITY SYMBOLS
A	mm	1=1	