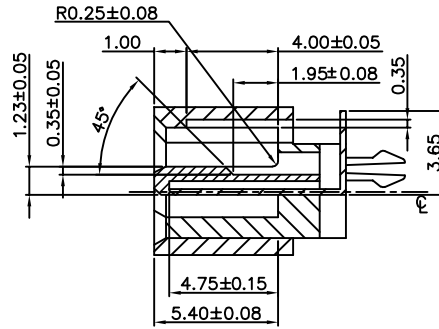
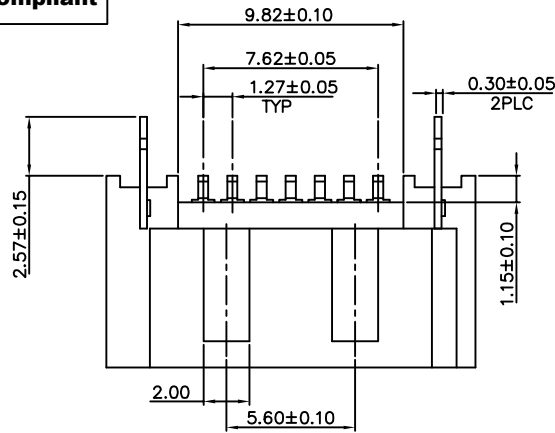


RoHS Compliant

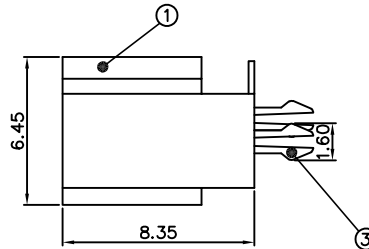
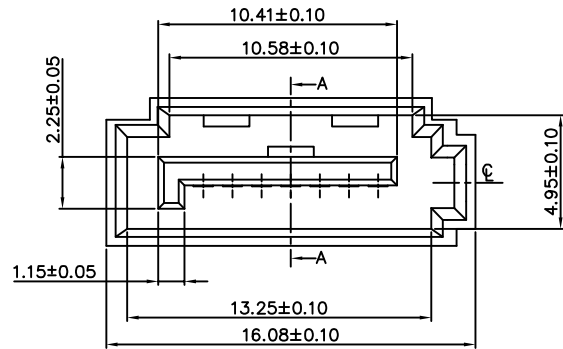
REVISIONS			
REV.	DESCRIPTION	DATE	DESIGN



SECTION A-A

SPECIFICATION:

- MATERIAL: HOUSING: LCP UL 94V-0  
COLOR: BLACK  
CONTACT: BRASS C2680R-H,T=0.25mm  
PEG: BRASS C2680R-H,T=0.30mm
- FINISH: CONTACT: (1u"/3u"/ 5u"/15u" )GOLD/TIN PLATING ON CONTACT AREA  
100u" MIN. TIN PLATING ON SOLDEXTAILS  
50u" MIN.NICKEL UNDERPLATING OVER ALL  
PEG: 100u" MIN. TIN PLATING ON SOLDEXTAILS  
50u" MIN.NICKEL UNDERPLATING OVER ALL
- CURRENT RATING:1.0A MAX
- DIELECTRIC WITHSTANDING VOLTAGE:500V AC R.M.S.FOR ONE MINUTE.
- INSULATION RESISTANCE:1000MΩ MIN. AT 500V DC.
- CONTACT RESISTANCE:30mΩ max
- OPERATING TEMPERATURE:-40°C TO +85°C



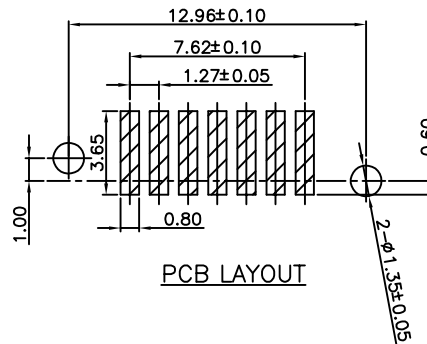
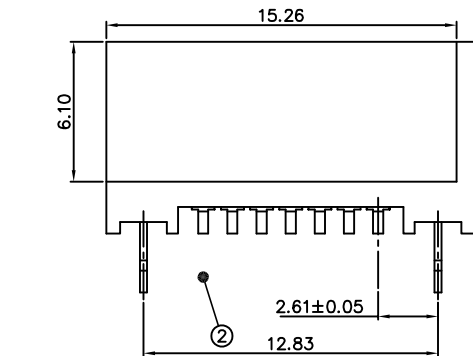
PART NO. INFORMATION

**S700 - M X A 5 T -002**

GENDER  
F: FEMALE  
M: MALE

CONTACT PLATED  
1: GOLD FLASH/TIN  
2: 15U" GOLD/TIN  
3: 30U" GOLD/TIN

PACKAGE  
T: TRAY  
R:TAPE REEL  
HOUSING COLOR  
5: BLACK  
HOUSING MATERIAL  
A: LCP



PCB LAYOUT

NO.	DESCRIPTION	MATERIAL	COLOR	REMARK
3	Board lock	Brass C2680		Gold/Ni Plated
2	Terminal	Brass C2680		Gold/Tin Plated
1	Housing	High Temp	Black	UL 94V-0

**Bestcreate Technology Limited**

TOLERANCES UNLESS OTHERWISE SPECIFIED:

X.	± 0.30	X.'	± 3'
.X	± 0.20	.X'	± 2'
.XX	± 0.15	.XX'	± 1'

Website: www.bsc-elec.com

E-mail: bestcreate@bsc-elec.com

DESIGN:

I. L 2017. 3. 1

CHECKED:

C. W 2017. 3. 1

APPROVED:

C. W 2017. 3. 1

DATE:

DATE:

DATE:

TITLE:

SATA 7P B型 全包开窗 SMT

MATERIAL:

FINISH:

PART NO:

S700-MXA5T-002

DWG NO:

S700-MXA5T-002

SIZE:

A4

SHEET:

1 OF 1

REV: A

UNIT mm

SCALE 1=1

QUALITY SYMBOLS

