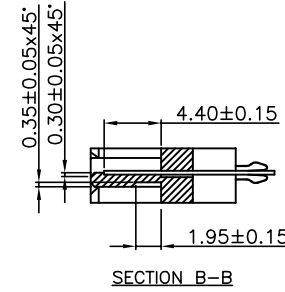
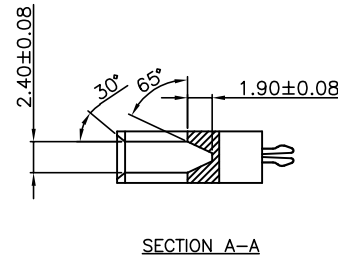
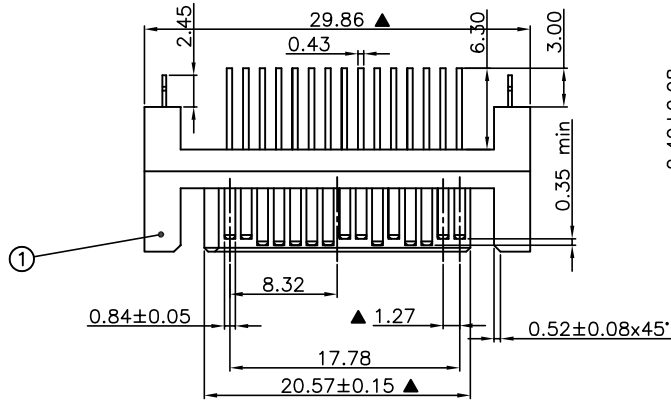
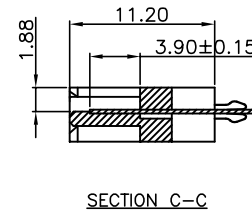
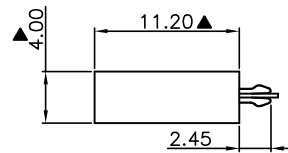
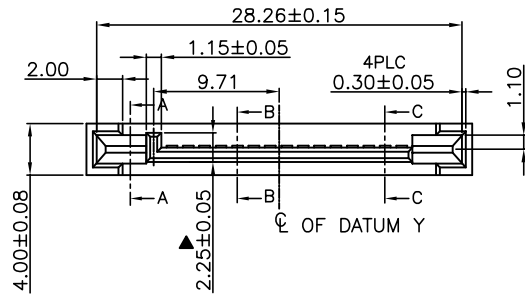


RoHS Compliant

| REVISIONS |             |      |        |
|-----------|-------------|------|--------|
| REV.      | DESCRIPTION | DATE | DESIGN |
|           |             |      |        |



SPECIFICATION:  
 1.MATERIAL:  
 HOUSING:LCP LG431-9731L 30% G/F UL 94V-0  
 COLOR:BLACK  
 CONTACT:BRASS C2680R-H,T=0.25mm  
 2.FINISH:  
 CONTACT:1u" GOLD/TIN PLATING ON CONTACT AREA  
 100u" MIN. TIN PLATING ON SOLDER TAILS  
 50u" MIN.NICKEL UNDERPLATING OVER ALL



PART NO. INFORMATION

**S150 - M X A 5 T -001**

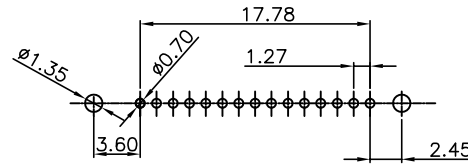
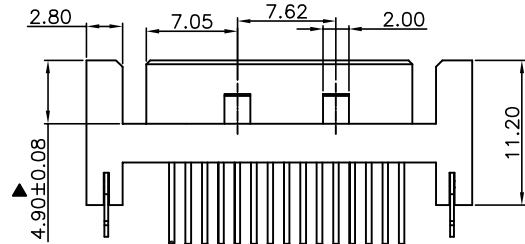
GENDER:  
 F: FEMALE  
 M: MALE

CONTACT PLATED:  
 1: GOLD FLASH/TIN  
 2: 15U" GOLD/TIN  
 3: 30U" GOLD/TIN

PACKAGE:  
 T: TRAY  
 R: TAPE REEL

HOUSING COLOR:  
 5: BLACK

HOUSING MATERIAL:  
 A: LCP



PCB LAYOUT  
 RECOMMENDED PCB TOLERANCE:±0.05

| NO. | DESCRIPTION | MATERIAL    | COLOR           | REMARK   |
|-----|-------------|-------------|-----------------|----------|
| 2   | Terminal    | Brass C2680 | Gold/Tin Plated |          |
| 1   | Housing     | High Temp   | Black           | UL 94V-0 |

**Bestcreate Technology Limited**

|        |          |            |                 |
|--------|----------|------------|-----------------|
| REV: A | UNIT: mm | SCALE: 1=1 | QUALITY SYMBOLS |
|--------|----------|------------|-----------------|

|  |        |      |      |
|--|--------|------|------|
| TOLERANCES UNLESS OTHERWISE SPECIFIED: |        |      |      |
| X.                                     | ± 0.30 | X.*  | ± 3' |
| .X                                     | ± 0.20 | .X*  | ± 2' |
| .XX                                    | ± 0.15 | .XX* | ± 1' |
| Website: www.bsc-elec.com              |        |      |      |
| E-mail: bestcreate@bsc-elec.com        |        |      |      |

|               |                |
|---------------|----------------|
| DESIGN: I.L   | DATE: 2017.3.1 |
| CHECKED: C.W  | DATE: 2017.3.1 |
| APPROVED: C.W | DATE: 2017.3.1 |

|                               |                         |               |  |
|-------------------------------|-------------------------|---------------|--|
| TITLE: SATA 15P 公座 DIP180°带鱼叉 |                         |               |  |
| MATERILA:                     | PART NO: S150-MXA5T-001 | SIZE: A4      |  |
| FINSH:                        | DWG NO: S150-MXA5T-001  | SHEET: 1 OF 1 |  |