

RoHS Compliant

REVISIONS			
REV.	DESCRIPTION	DATE	DESIGN

A

B

C

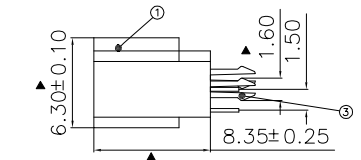
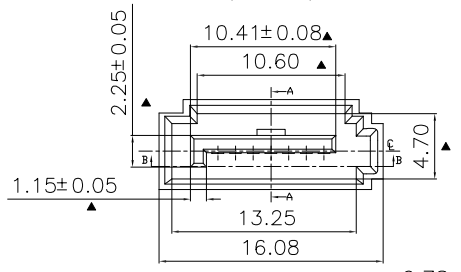
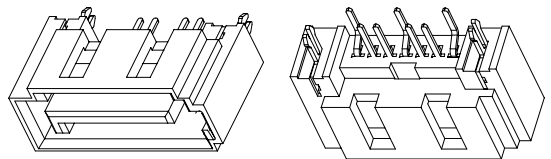
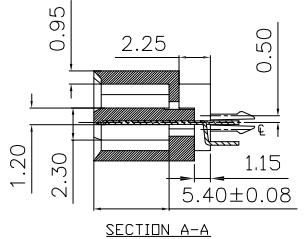
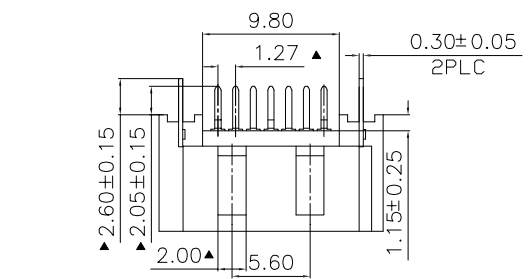
D

A

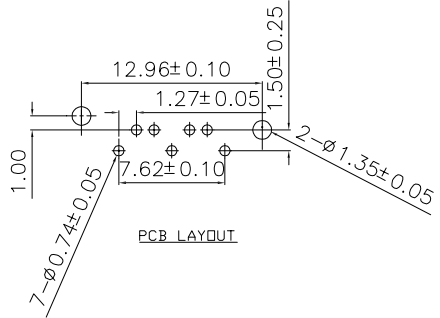
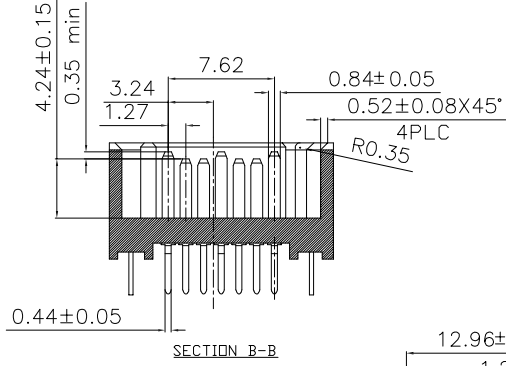
B

C

D



SPECIFICATION:  
 1.MATERIAL:  
 HOUSING: LCP UL 94V-0  
 COLOR:BLACK  
 CONTACT:BRASS C2680R-H,T=0.25mm  
 PEG: BRASS C2680R-H,T=0.30mm  
 2.FINISH:  
 CONTACT: 5u" GOLD/TIN PLATING ON CONTACT AREA  
 100u" MIN. TIN PLATING ON SOLDERTAILS  
 50u" MIN.NICKEL UNDERPLATING OVER ALL  
 PEG: 100u" MIN. TIN PLATING ON SOLDERTAILS  
 50u" MIN.NICKEL UNDERPLATING OVER ALL



PART NO. INFORMATION

**S700 - M X A 5 T -005**

GENDER  
 F: FEMALE  
 M: MALE

CONTACT PLATED  
 1: GOLD FLASH/TIN  
 2: 15U" GOLD/TIN  
 3: 30U" GOLD/TIN

PACKAGE  
 T: TRAY  
 R:TAPE REEL  
 HOUSING COLOR  
 5: BLACK  
 HOUSING MATERIAL  
 A: LCP

环保要求	产品必须符合ROHS要求			
3	Board lock	Brass C2680	Tin/Ni Plated	
2	Terminal	Brass C2680	Gold/Tin Plated	
1	Housing	High Temp	Black	UL 94V-0
NO.	DESCRIPTION	MATERIAL	COLOR	REMARK

**Bestcreate Technology Limited**

TOLERANCES UNLESS OTHERWISE SPECIFIED:			
X.	± 0.30	X.*	± 3'
.X	± 0.20	.X*	± 2'
.XX	± 0.15	.XX*	± 1'

Website: [www.bsc-elec.com](http://www.bsc-elec.com)  
 E-mail: [bestcreate@bsc-elec.com](mailto:bestcreate@bsc-elec.com)

DESIGN:	I.L	DATE:	2017.3.1
CHECKED:	C.W	DATE:	2017.3.1
APPROVED:	C.W	DATE:	2017.3.1

TITLE: SATA 7P MALE B TYPE			
MATERILA:	PART NO: S700-MXA5T-005	SIZE: A4	
FINSH:	DWG NO: S700-MXA5T-005	SHEET: 1 OF 1	

REV: A	UNIT mm	SCALE 1=1	QUALITY SYMBOLS
-----------	------------	--------------	-----------------