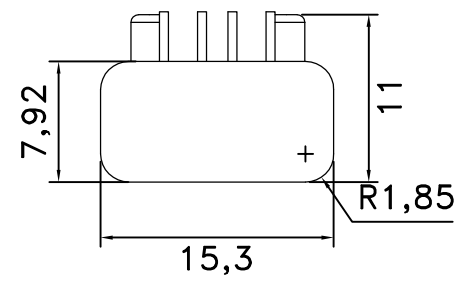
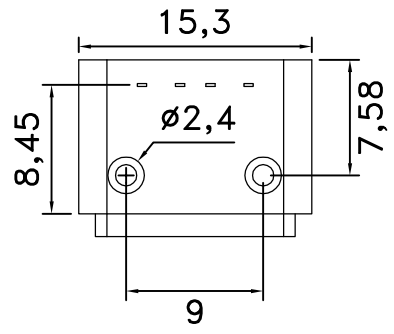
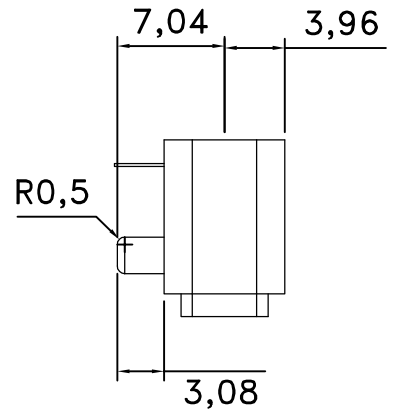
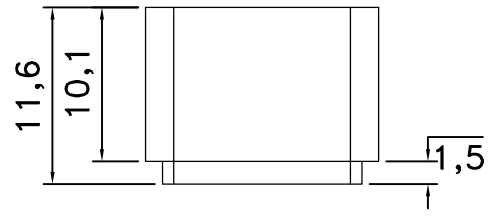
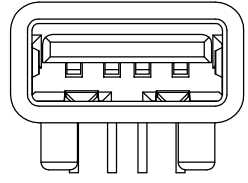
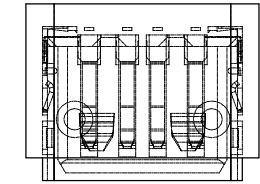
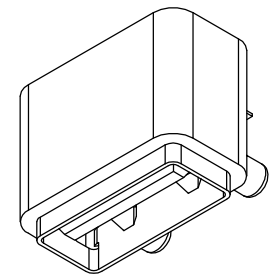


RoHS Compliant

REVISIONS			
REV.	DESCRIPTION	DATE	DESIGN



PART NO. INFORMATION

U01-A F X X 5 R - W002

GENDER:
F: FEMALE
M: MALE

PORT TYPE:
B: TYPE A

CONTACT PLATED:
1: GOLD FLASH
2: GOLD 3U"
3: GOLD 5U"
4: GOLD 10U"
5: GOLD 15U"
6: GOLD 30U"

HOUSING MATERIAL:
A: LCP B: PBT
C: PA9T D: PA6T
E: PA46 F: PA66

PACKAGE:
R: TAPE REEL T: TRAY

HOUSING COLOR:
2: WHITE
5: BLACK
9: NATURE

NOTE:

1. MATERIAL

1.1. HOUSING: HIGH TEMP ;PBT WHITE .

1.2. CONTACT: PHOSPHOR BRONZE T=0.2 .

1.3. SHELL: SPCC-SD T=0.30.

2. FINISH:

2.1 CONTACT: 1U" AU(MIN), 80u" MIN TIN PLATING ON SOLDER TAIL AREA, 50u" MIN. NICKEL UNDERPLATING OVERALL.

2.2 SHELL: 1u" AURUM MIN PLATING OVERALL.

3. Electrical Characteristics:

Dielectric Withstanding Voltage: AC 100V At 1 minute,

Insulation Resistance: 1000 M Ω / Min,

Contact Resistance: 30m Ω /max.

4. Mechanical Characteristics:

Insertion Force: 35N Maximum. Extraction Force: initial 10N Minimum. After 3000 cycles: 10N Minimum.

Bestcreate Technology Limited

TOLERANCES UNLESS OTHERWISE SPECIFIED:			
X.	\pm 0.50	X.*	\pm 2'
.X	\pm 0.20	.X*	\pm 1'
.XX	\pm 0.10	.XX*	\pm 0.5'

Website: www.bsc-elec.com
Email: bestcreate@bsc-elec.com

DESIGN:	I.L	DATE:	2017.3.1
CHECKED:	C.W	DATE:	2017.3.1
APPROVED:	C.W	DATE:	2017.3.1

TITLE: WATERPROOF USB 2.0 A FEMALE CONNECTOR		
MATERILA:	PART NO: U01-AFXX5R-W002	SIZE: A4
FINSH:	DWG NO: U01-AFXX5R-W002	

REV: A	UNIT mm	SCALE 1=1	QUALITY SYMBOLS
-----------	------------	--------------	-----------------