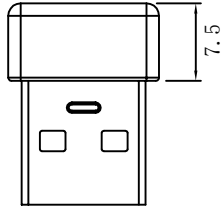
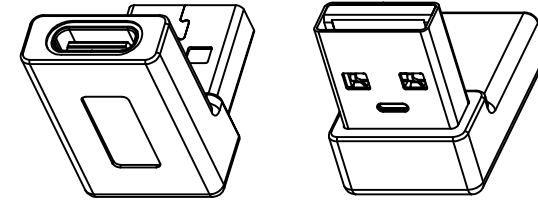
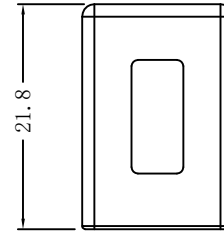
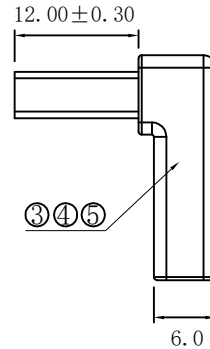
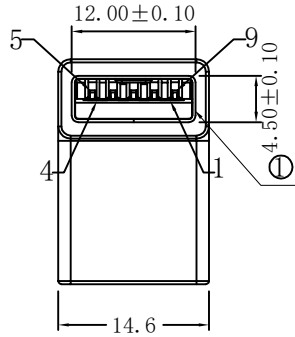


RoHS Compliant

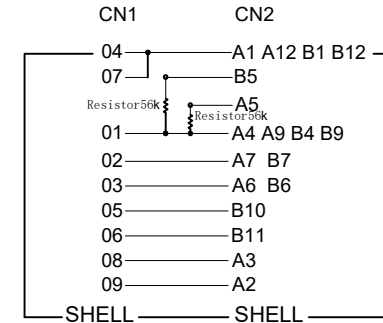
| REVISIONS |             |      |        |
|-----------|-------------|------|--------|
| REV.      | DESCRIPTION | DATE | DESIGN |
|           |             |      |        |



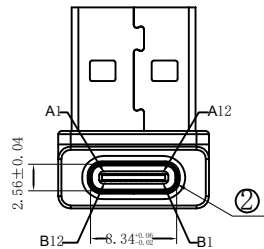
CN1



CONTACT



CN2



NOTES:

- 100% open short test condition;
- Conductor Resistance  $\leq 5 \Omega$ , insulation resistance  $\geq 10M \Omega$ .  
High voltage test, DC 300V/10mS.
- Support Power Charging、Data Transfer.
- PCB Board Connection.

|    |               |   |           |      |
|----|---------------|---|-----------|------|
| 5  | Outer Mold    | PVC 45P BLACK                           | 5.09.02-1 | 3.5G |
| 4  | Internal Mold | PE SIZING MATERIAL TRANSPARENCY         | 5.09.01-0 | 2.1G |
| 3  | In-Connection | PCB 2*Resistor56K                       | 5.12.563  | 1PCS |
| 2  | CONNECTOR     | USB TYPE CF SHELL NICKEL PLATED PIN G/F | 5.03.58   | 1PCS |
| 1  | CONNECTOR     | USB 3.0 AM SHELL NICKEL PLATED PIN G/F  | 6.12.001  | 1PCS |
| NO | NAME          | MATERIAL                                | NO        | QTY  |

**Bestcreate Technology Limited**

TOLERANCES UNLESS OTHERWISE SPECIFIED:

|     |        |      |      |
|-----|--------|------|------|
| X.  | ± 0.50 | X'   | ± 5' |
| .X  | ± 0.30 | .X'  | ± 2' |
| .XX | ± 0.10 | .XX' | ± 1' |

Website: www.bsc-elec.com  
Email: bestcreate@bsc-elec.com

DESIGN: I. L. DATE: 2017.3.1

CHECKED: C. W. DATE: 2017.3.1

APPROVED: C. W. DATE: 2017.3.1

TITLE: USB3.0 AM TO TYPE CF 90° RECURVED

MATERILA: PART NO: AD30AMCF-011 SIZE: A4

FINSH: DWG NO: AD30AMCF-011

REV: A UNIT mm SCALE 1=1 QUALITY SYMBOLS

1

2

3

4

5

6

7

8