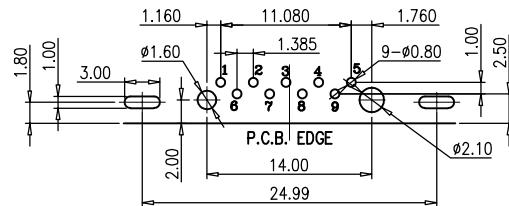
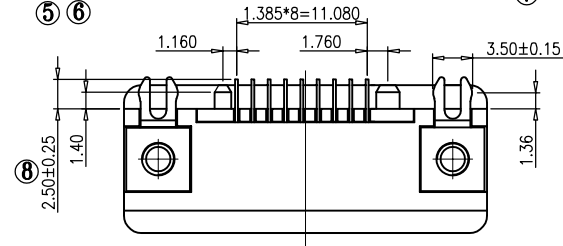
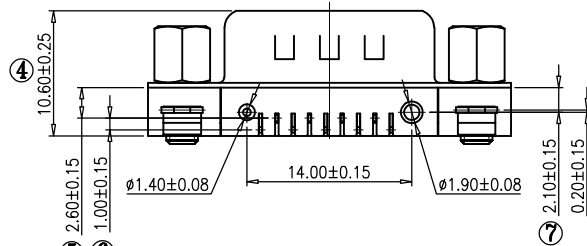
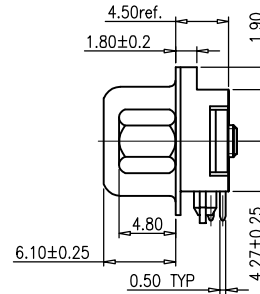
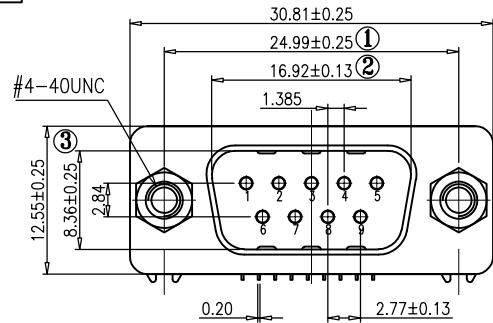


RoHS Compliant

REVISIONS			
REV.	DESCRIPTION	DATE	DESIGN



RECOMMENDED PCB LAYOUT THICKNESS=1.2mm
TOLERANCE:±0.05

- NOTE:
- MATERIALS AND FINISHED
INSULATOR : PBT+30% GF UL 94V-0,
SHELL : STEEL, NI FINISHED
CONTACT MATERIAL:BRASS, SELEVITE GOLD FINISHED
HARPOON:STEEL,SN FINISHED
RIVET:COPPER ALLOY ,NI FINISHED
WITH #4-40 THREADED ASSEMBLED
 - ELECTRICAL CHARACTERISTICS
CURRENT RATING : 1.0 AMP DC
VOLTAGE RATING: 300 V DC
CONTACT RESISTANCE :20 MILLIOHMS MAX.
DIELECTRIC WITHSTANDING VOLTAGE : 1000 V AC MIN.
INSULATION RESISTANCE : 1000 MEGAOHMS MIN.
 - MECHANICAL
MATING FORCE:5.5Kgf MAX.
UNMATING FORCE:1.0 Kgf MIN
 - ENVIRONMENTAL
OPERATING TEMPERATURE: -55°C ~ +85°C
STORAGE TEMPERATURE:-55°C ~ +105°C
 - HOW TO ORDER:

SLM521-09XXXXP-BX155

M:MALE	5:Plastic column
09:09Pin	5:The end2.5mm
S: Selevite Gold Bright TIN	7:4.8*10.0 Copper Alloy
M: SELEVITE GOLD MATTE TIN	8:4.8*10.0 STEEL
1:G/F"	A:No screw type
2:2u"	B:Ass'y screw type
3: 3u"	C:Attach screw type
6: 10u"	P:PBT
4. FULL Gold	B: Black
5. FULL NI	C: Green

Bestcreate Technology Limited

TOLERANCES UNLESS OTHERWISE SPECIFIED:

.X	± 0.38	X.	± 2'
.XX	± 0.25	.X'	± 1'
.XXX	± 0.15	.XX'	± 0.5'

Website:www.bsc-elec.com

Email:bestcreate@bsc-elec.com

DESIGN: I. L DATE: 2017. 3. 1

CHECKED: C. W DATE: 2017. 3. 1

APPROVED: C. W DATE: 2017. 3. 1

TITLE: MID MOUNT D SUB 9P MALE SLIM CONNECTOR

MATERILA: C. W PART NO: SLM521.09XXXXP.BX155 SIZE: A4

FINSH: C. W DWG NO: SLM521.09XXXXP.BX155

REV: A	UNIT mm	SCALE 1=1	QUALITY SYMBOLS
--------	---------	-----------	-----------------