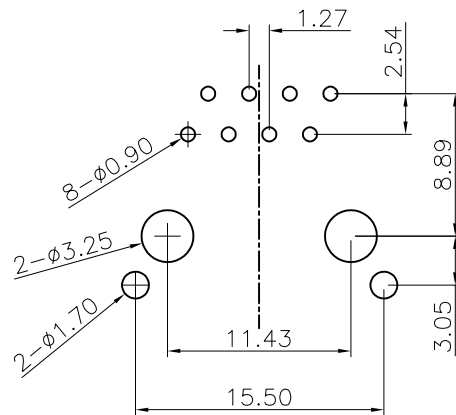
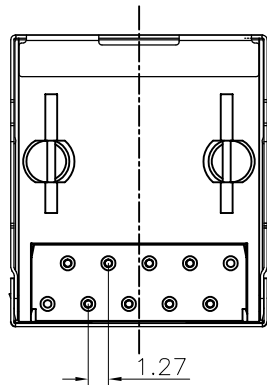
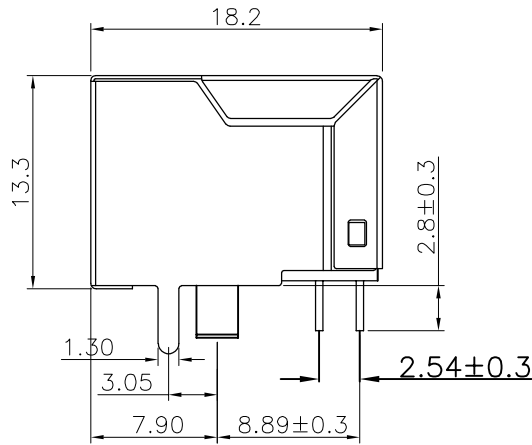
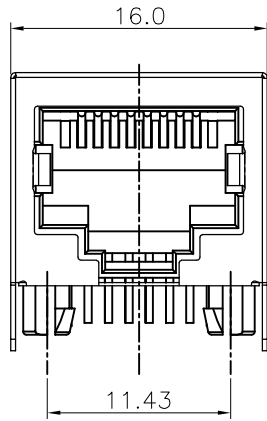


RoHS Compliant

REVISIONS			
REV.	DESCRIPTION	DATE	DESIGN



PCB LAYOUT

NOTES

**MATERIAL**  
 1. HOUSING MATERIAL : GLASS FILLED POLYESTER UL94V-0.  
 2. CONTACT MATERIAL : PHOSPHOR BRONZE Ø. 46mm.  
 3. PLATING : GOLD PLATING OVER NICKEL.  
 4. SHIELD : SUS 201 T=0.20mm WITH NICKEL PLATED.

**ELECTRICAL**  
 1. VOLTAGE RATING : 125 VAC RMS.  
 2. CURRENT RATING : 1.5 AMP.  
 3. CONTACT RESISTANCE : 30 MILLIOHMS MAX.  
 4. INSULATION RESISTANCE : 500 MEGOHMS MIN @ 500V DC .  
 5. DIELECTRIC DIELECTRIC RESISTANCE : 500V AC RMS 50Hz. 1MIN.

**MECHANICAL**  
 1. DURRABILITY : 750 CYCLES MIN.

**ENVIRONMENTAL:**  
 1. STORAGE : -40°C ~ +85°C.  
 2. OPERATION : -40°C ~ +85°C.

PART NO. INFORMATION

RJ01- X 5 0 X - 112

**CONTACT PLATED**  
 1: G/F 2: AU 3U"  
 3: AU 6U" 4: AU 15U"  
 5: AU 30U"

**PACKAGE**  
 R: TAPE REEL  
 T: TRAY

**Bestcreate Technology Limited**

TOLERANCES UNLESS OTHERWISE SPECIFIED:

.X	± 0.35	X'	± 3'
.XX	± 0.25	.X'	± 2'
.XXX	± 0.15	.XX'	± 1'

Website: [www.bsc-elec.com](http://www.bsc-elec.com)  
 Email: [bestcreate@bsc-elec.com](mailto:bestcreate@bsc-elec.com)

DESIGN: I. L DATE: 2017. 3. 1

CHECKED: C. W DATE: 2017. 3. 1

APPROVED: C. W DATE: 2017. 3. 1

TITLE: 5621 1X1 RJ45 CONNECTOR DIP TYPE WITH SHIELD

MATERILA: PART NO: RJ01-X50X-112 SIZE: A4

FINSH: DWG NO: RJ01-X50X-112

REV: A UNIT mm SCALE 1=1 QUALITY SYMBOLS