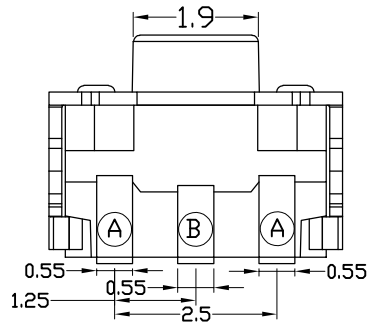
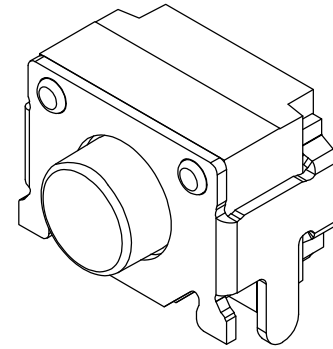
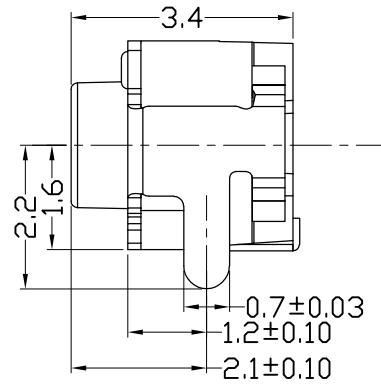
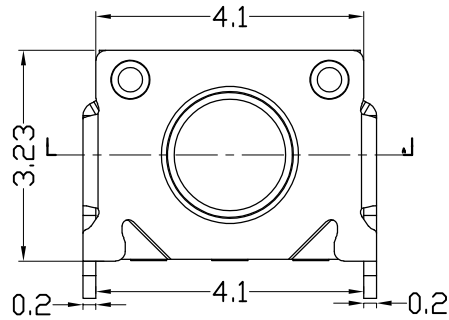
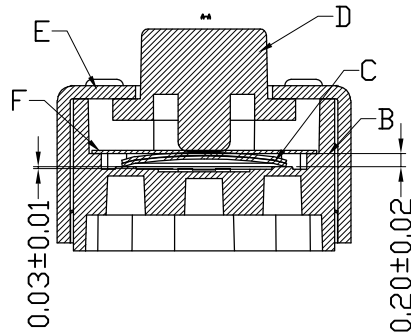
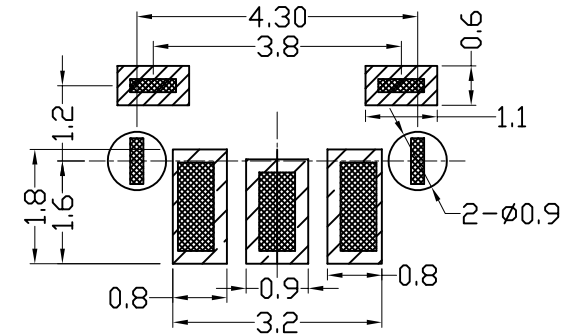
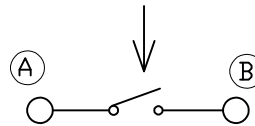


RoHS Compliant

REVISIONS			
REV.	DESCRIPTION	DATE	DESIGN



Circuit Diagram



主要技术指标:  
Main Specifications

气候等级 Climate grade	额定值 Rated values	接触电阻 Contact resistance	耐压 Dielectric strength	绝缘电阻 Insulation resistance	按压力 Operating force	行程 Travel	寿命 Life
-30°C~70°C	0.5A/12V	≤100mΩ	250V. AC. 1Min	≥100MΩ	160±50g	0.20±0.05	200000次
-30°C~70°C	0.5A/12V	≤100mΩ	250V. AC. 1Min	≥100MΩ	250±50g	0.22±0.05	100000次

序号	名称	数量	材料	备注
A	引脚	1	C5191	镀银
B	塑胶底座	1	LCP	黑色
C	弹片	2	SUS301-Ag0.5	单面镀银
D	塑胶按钮	1	LCP E130I	白色
E	盖板	1	C5191H	镀银
H	黄膜	1	PI	黄色

**Bestcreate Technology Limited**

TOLERANCES UNLESS OTHERWISE SPECIFIED:

X.	±	0.45	X.*	±	5'
.X	±	0.35	.X.*	±	2'
.XX	±	0.25	.XX.*	±	1'

DESIGN: DATE:

I. L. 2017. 3. 1

CHECKED: DATE:

C. W. 2017. 3. 1

APPROVED: DATE:

C. W. 2017. 3. 1

TITLE:

**TOUCH SWITCH**

MATERILA:

FINSH:

PART NO:

DWG NO:

SIZE:

1 OF 2

Website:www.bsc-elec.com

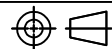
Email:bestcreate@bsc-elec.com

REV: A

UNIT mm

SCALE 1=1

QUALITY SYMBOLS

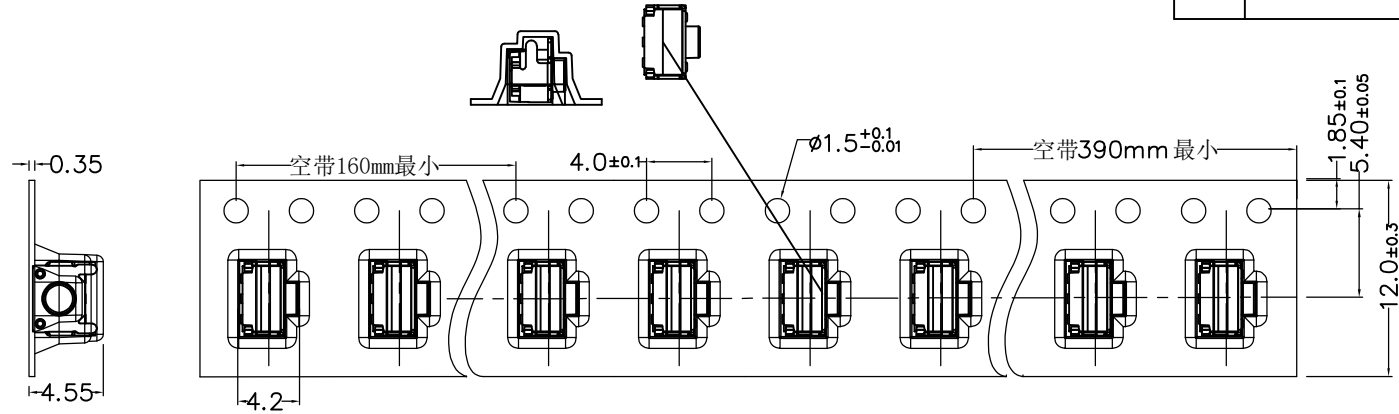


RoHS Compliant

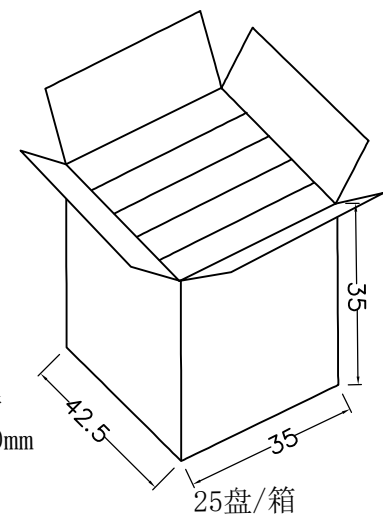
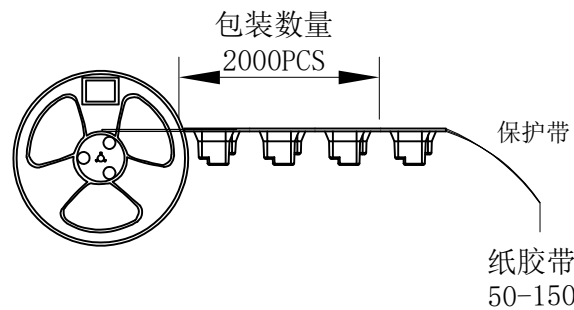
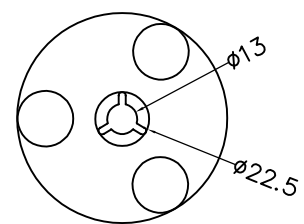
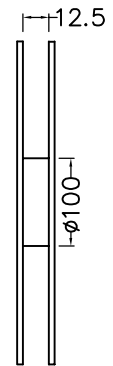
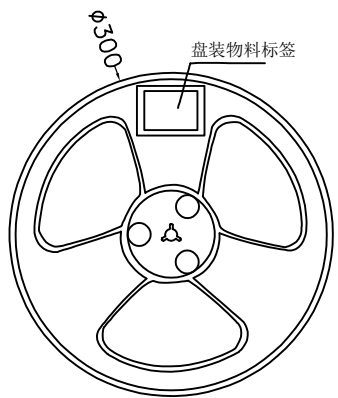
REVISIONS			
REV.	DESCRIPTION	DATE	DESIGN

A  
B  
C  
D

A  
B  
C  
D



出料方向



**Bestcreate Technology Limited**

TOLERANCES UNLESS OTHERWISE SPECIFIED:	
X. $\pm 0.45$	X.* $\pm 5^*$
.X $\pm 0.35$	.X* $\pm 2^*$
.XX $\pm 0.25$	.XX* $\pm 1^*$
Website: <a href="http://www.bsc-elec.com">www.bsc-elec.com</a>	
Email: <a href="mailto:bestcreate@bsc-elec.com">bestcreate@bsc-elec.com</a>	

DESIGN:	DATE:
I. L	2017. 3. 1
CHECKED:	DATE:
C. W	2017. 3. 1
APPROVED:	DATE:
C. W	2017. 3. 1

TITLE: TOUCH SWITCH		
MATERILA:	PART NO: K-W1043340A7-D	SIZE: A4
FINSH:	DWG NO: K-W1043340A7-D	1 OF 2

REV: A	UNIT mm	SCALE 1=1	QUALITY SYMBOLS
--------	---------	-----------	-----------------

1 2 3 4 5 6 7 8