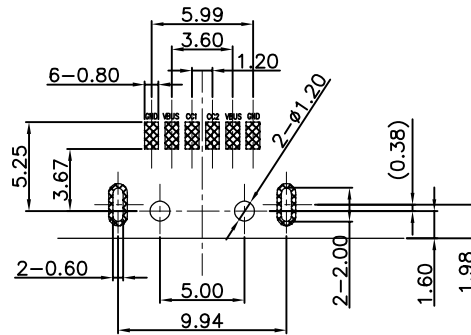
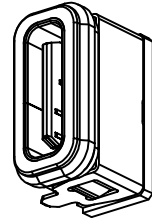
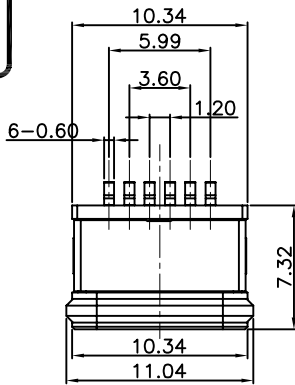
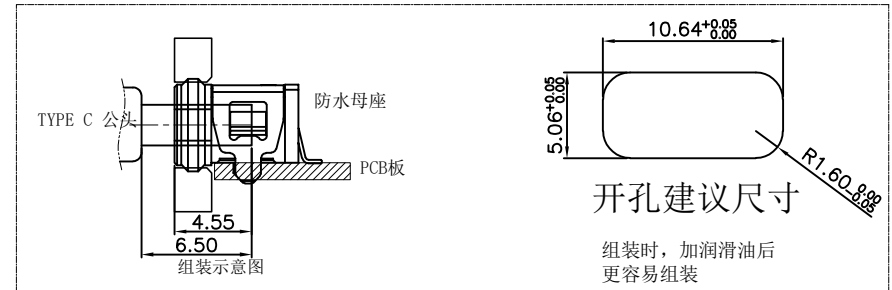
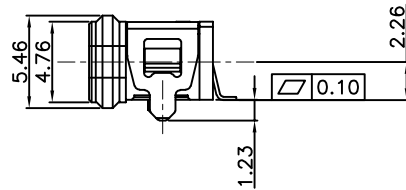
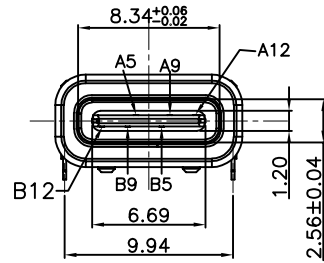


RoHS Compliant



RECOMMENDED PCB LAYOUT(TOP VIEW)

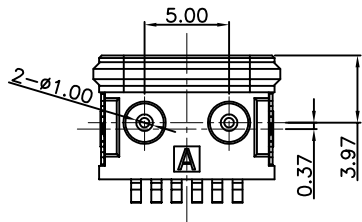
THICKNESS T=1.0mm
DEFAULT TOLERANCE+/-0.05



NOTES:
SPECIFICATION:

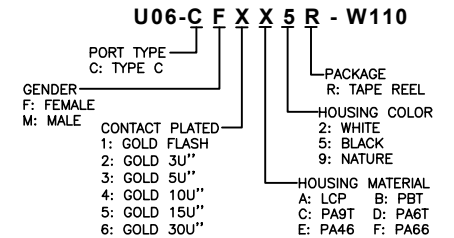
1. CURRENT RATING: 3.0A MAX
2. DIELECTRIC WITHSTAND VOLTAGE: 100VAC
3. TEMPERATURE RANGE: -30 °C ~ 85 °C
4. CONTACT RESISTANCE: 40 MILLIONHM MAX
5. INSULATION RESISTANCE: 100 MEGOHMS MIN.
6. INSERTION FORCE : 5N~20N
7. UNMATING FORCE: 8N~20N
8. DURABILITY:5000 CYCLES

A5	CC1	B12	GND
A9	VBUS	B9	VBUS
A12	GND	B5	CC2
PIN	SIGNAL NAME	PIN	SIGNAL NAME



ITEM	PART NAME	Q' TY	FINISH	NOTE
5	Shell2	1	SUS304 Ni Plating T=0.20mm	Ni:40°120u"
4	Shell1	1	SUS304 Ni Plating T=0.25mm	Ni:40°120u"
3	Housing2	1	LCP(G.F30%)	
2	Contact	5	Phosphor bronze C5210R-EH Au/Ni Plating T=0.20mm	Ni:40°160u" Au:CONTACT AREA:3u", OTHER AREA:G/F
1	Housing	1	PA9T (G.F30%)	

PART NO. INFORMATION



Bestcreate Technology Limited

TOLERANCES UNLESS OTHERWISE SPECIFIED:

X.	±	0.50	X.*	±	5°
.X	±	0.30	.X*	±	2°
.XX	±	0.10	.XX*	±	1°

DESIGN:
I. L

DATE:

TITLE:

IPX8 WATERPROOF 6P USB C FEMALE
CONNECTOR SMT TYPE

CHECKED:

DATE:

MATERILA:

PART NO:
U06-CFXX5R-W110

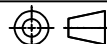
SIZE:
A4

REV: A

UNIT
mm

SCALE
1=1

QUALITY
SYMBOLS



Website:www.bsc-elec.com

APPROVED:

DATE:

FINSH:

DWG NO:
U06-CFXX5R-W110

1 OF 1

Email:bestcreate@bsc-elec.com