

RoHS Compliant

REVISIONS			
REV.	DESCRIPTION	DATE	DESIGN

备注:

1. 材质:

- 1) 端子MOLDING: LCP+30%/F, UL 94V-0, 颜色: 黑色
- 2) HOUSING: LCP+30%/F, UL 94V-0, 颜色: 黑色
- 3) 端子: 材质: 磷铜C2680R-H T=0.20±0.01mm. 接触区镀金G/F.
- 4) 外壳: SPCC & 黄铜 T=0.30 镍底: 50~100U" & 镀金G/F
- 5) 卡钩: 不锈钢SUS301 T=0.40

2. 电气特性:

- 1) 接触阻抗: 30mΩ MAX (初始) FOR VBUS AND GND CONNECTS, 其它50mΩ MAX (初始) 环境与寿命测试后的变化值: +10Ω MAX
- 2) 绝缘阻抗: 100MΩ MIN.
- 3) 额定电流: 1.5A
- 4) 耐压: 100V AC (RMS)

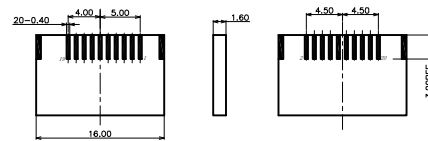
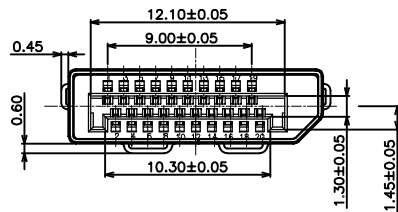
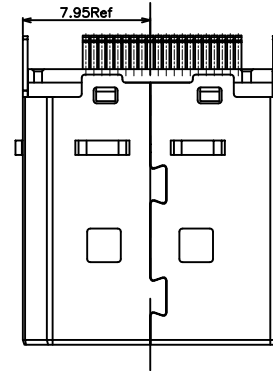
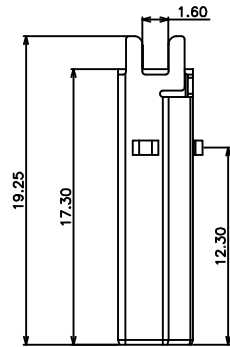
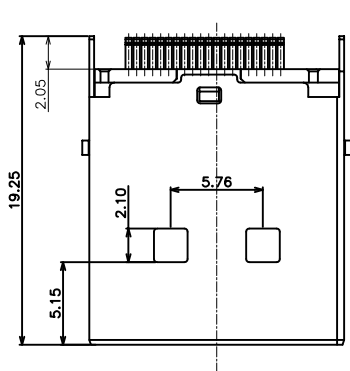
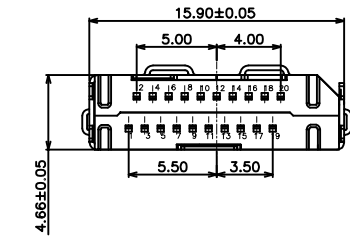
3. 机械特性

- 1) 插入力: 4.5kg MAX.
- 2) 拔出力: 1.0kg MIN.
- 4) 0kg Max
- 3) 寿命: 5000 CYCLES
4. 环境特性: 使用温度: -40° C-85° C
5. 符合本公司环境物质管理标准
6. 盐雾: 24H

标记▽为重点管控尺寸.

标记⊗为FAI尺寸.

标记■为CPK尺寸.



PCB Layout Reference
SCALE 2:1

PART NO. INFORMATION

DP09- M X X X X - 003-V2-A

GENDER:
F: FEMALE
M: MALE

CONTACT PLATED:
1: GOLD FLASH
2: GOLD 3U"
3: GOLD 5U"
4: GOLD 10U"
5: GOLD 15U"
6: GOLD 30U"

PACKAGE:
R: TAPE REEL T: TRAY

HOUSING COLOR:
2: WHITE
5: BLACK
9: NATURE

HOUSING MATERIAL:
A: LCP B: PBT
C: PA9T D: PA6T
E: PA46 F: PA66

PIN	定义	PIN	定义
1	ML Lane0 (P)	11	GND
2	GND	12	ML Lane3 (N)
3	ML Lane0 (N)	13	CFG1
4	ML Lane1 (P)	14	CFG2
5	GND	15	AUX (HLP)
6	ML Lane1 (N)	16	GND
7	ML Lane2 (P)	17	AUX (HLP)
8	GND	18	HOT PLUG
9	ML Lane2 (N)	19	Retarn(for Pwr)
10	ML Lane3 (P)	20	DP-PWR (3.3V 500mA)

Bestcreate Technology Limited

TOLERANCES UNLESS OTHERWISE SPECIFIED:

.X	± 0.25	.X"	± 3"
.XX	± 0.20	.X"	± 2"
.XXX	± 0.15	.XX"	± 1"

Website: www.bsc-elec.com

Email: bestcreate@bsc-elec.com

DESIGN: DATE:

I. L 2017. 3. 1

CHECKED: DATE:

C. W 2017. 3. 1

APPROVED: DATE:

C. W 2017. 3. 1

TITLE:
DP 20P MALE CONNECTOR FOR 1.6MM PCB

MATERILA: PART NO: DP09-MXXXX-003-V2-A SIZE: A4

FINSH: DWG NO: DP09-MXXXX-003-V2-A

REV:	UNIT	SCALE	QUALITY SYMBOLS
A	mm	1=1	