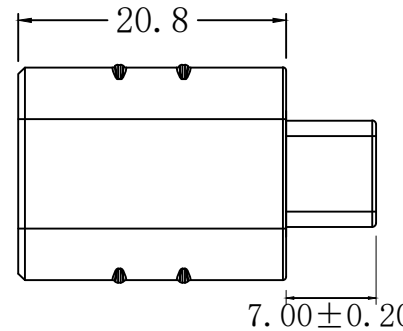
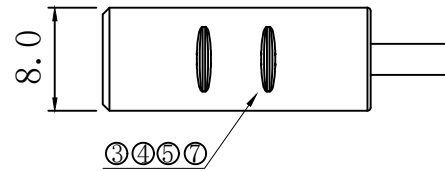
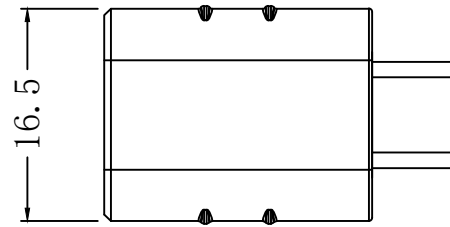
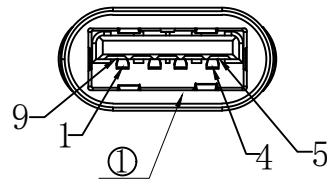


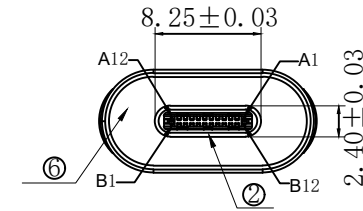
RoHS Compliant

REVISIONS			
REV.	DESCRIPTION	DATE	DESIGN

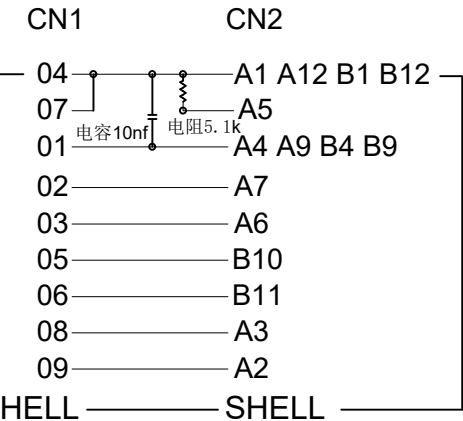
CN1



CN2



接点表



注:

- 100%短/断路&错线测试条件.
- 导通阻抗 $\leq 5 \Omega$.
耐压测试: AC 300V/10mS. 漏电流 0.5mA.
绝缘阻抗 $\geq 10M \Omega$. 高压测试: DC 300V/10mS.
- 支持电源、数据传输、OTG功能.
- 锌合金壳粘胶水推力测试为 $> 150N$.

Bestcreate Technology Limited

TOLERANCES UNLESS OTHERWISE SPECIFIED:

X.	± 0.50	X.*	$\pm 5^\circ$
.X	± 0.30	.X*	$\pm 2^\circ$
.XX	± 0.10	.XX*	$\pm 1^\circ$

Website: www.bsc-elec.com
Email: bestcreate@bsc-elec.com

DESIGN: I. L. DATE: 2022. 7. 10

CHECKED: C. W. DATE: 2022. 7. 10

APPROVED: C. W. DATE: 2022. 7. 10

TITLE: Metal USB 3.1 Type C male to USB 3.0 A Female Adapter

MATERILA:	PART NO: AD31CMAF-037	SIZE: A4
FINSH:	DWG NO: AD31CMAF-037	

REV: A	UNIT mm	SCALE 1=1	QUALITY SYMBOLS
--------	---------	-----------	-----------------