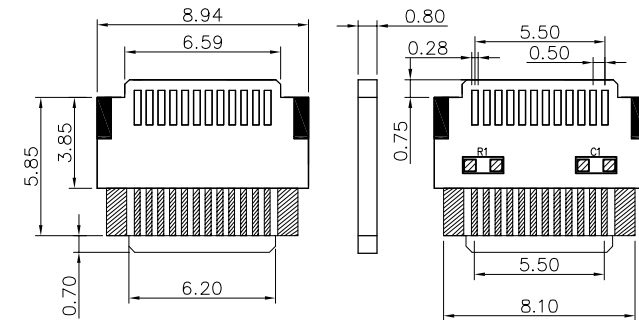
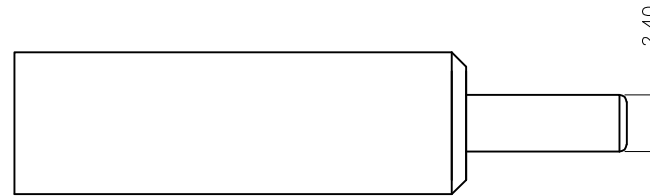
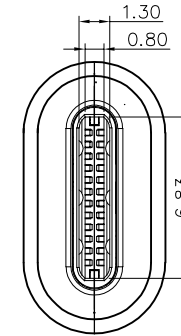
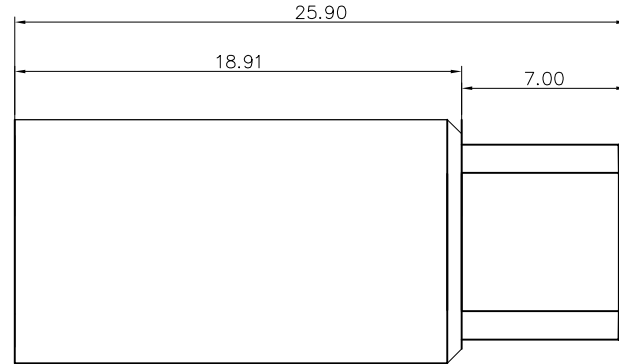
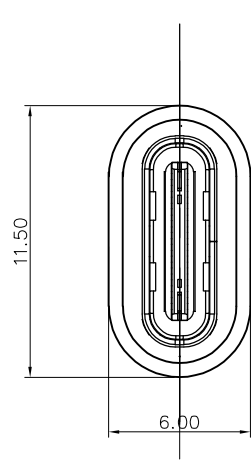


RoHS Compliant

REVISIONS			
REV.	DESCRIPTION	DATE	DESIGN



NOTE:

1. ELECTRICAL CHARACTERISTICS;
 - 2.1 CONTACT RESISTANCE: 80mΩ Max
 - 2.2 CONTACT CURRENT RATING: 1.5 A
 - 2.3 DIELECTRIC WITHSTANDING VOLTAGE: 100 V R. M. S.
 - 2.4 INSULATION RESISTANCE 100 MEGOHMS Min
 - 2.5 OPERATING TEMPERATURE: -25° C ~ 75° C
2. MECHANICAL CHARACTERISTICS;
 - 2.1 MATING FORCE: USB CM 5~20N & MICRO USB 35N Max.
 - 2.2 UNMATED FORCE: USB CM 8~20N & MICRO USB 10N Min.
3. PLATING
 - 3.1 TERMINAL CONTACT: (SEE TAB) GOLD PLATING
ALL OVER 50u"MIN NICKEL
 - 3.2 SHELL: 50u"MIN. NICKEL ALL OVER

Color
Black

3	TYPE CM		TYPE C M NI	1PCS
2	TYPE CF		TYPE C F NI	0.005KG
1	PCBA		TYPE CM TO CF, NICKEL PLATED	1PCS
Item	Name	Part Number	Description	Q'TY

PCB
t=0.8mm

Bestcreate Technology Limited

TOLERANCES UNLESS OTHERWISE SPECIFIED:

X.	±	0.50	X.'	±	5'
.X	±	0.30	.X'	±	2'
.XX	±	0.10	.XX'	±	1'

DESIGN:	DATE:	2017.3.1
I.L	DATE:	2017.3.1
CHECKED:	DATE:	2017.3.1
C.W	DATE:	2017.3.1
APPROVED:	DATE:	2017.3.1
C.W	DATE:	2017.3.1

TITLE: USB3.1 CF TO USB 3.1 CF ADAPTER		
MATERILA:	PART NO:	AD31CFCF-028
FINSH:	DWG NO:	AD31CFCF-028
	SIZE:	A4

REV: A	UNIT mm	SCALE 1=1	QUALITY SYMBOLS	
-----------	------------	--------------	--------------------	--

Website: www.bsc-elec.com
Email: bestcreate@bsc-elec.com