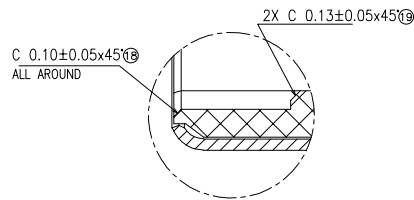
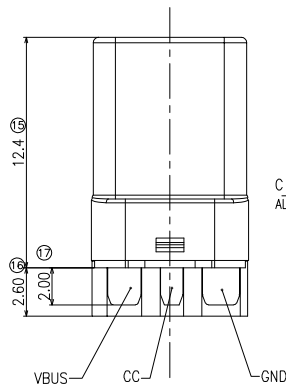
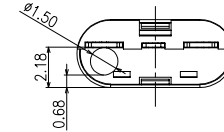
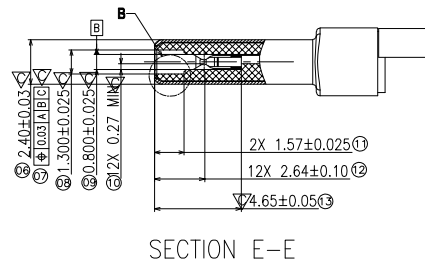
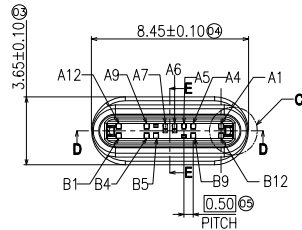
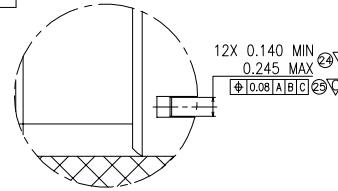
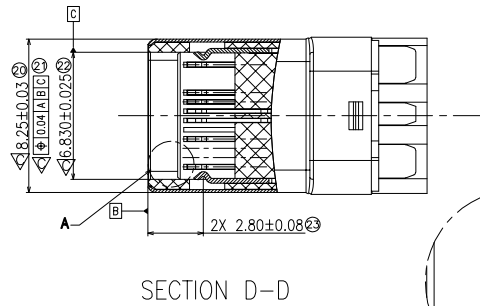
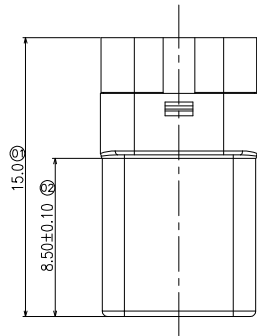
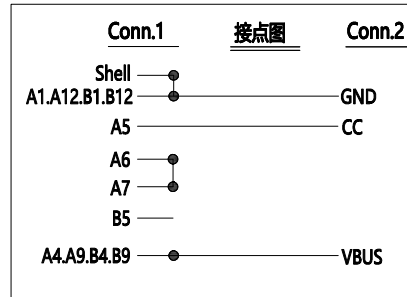


RoHS Compliant

REVISIONS			
REV.	DESCRIPTION	DATE	DESIGN



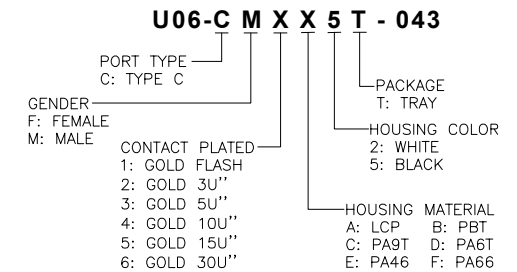
DETAIL B
SCALE 4:1



NOTES:

- MATERIAL:
 - HOUSING: LCP,UL94V-0,BLACK COLOR
 - COVER: LCP,UL94V-0,BLACK COLOR
 - CONTACT: C2680
 - SHELL: SUS 316L
 - LATCH: SUS 301
- PLATING:
 - CONTACT TERMINAL: 0.025~0.75um Au Min. GOLD PLATING ON CONTACT AREA
 - SHELL: 2.0um Min. Ni PLATING OVER ALL.
 - CONTACT AREA: 3.0um MATTE Tin PLATING ON SOLDER TAILS
 - UNDERPLATING OVER ALL: 2.0um Min. Ni
- ELECTRICAL CHARACTERISTICS:
 - CURRENT RATING: 2.0~7.0A Max.
 - VOLATAGE RATING: AC 500V
 - INSULATION RESISTANCE: 500MΩ
 - CONTACT RESISTANCE: 40mΩ
 - OPERATING TEMPERATURE RANGE: -55°C~+85°C
- MACHINE CHARACTERISTICS:
 - INSERT FORCE: 0.5~2.0 kg/F
 - EXTRACT FORCE: 0.8~2.0 kg/F
 - DURABILITY: 10000 CYCLES AT A MAX RATE OF 200CYCLES PER HOUR
- EMPHASIS CONTROL SIZE” ”

PART NO. INFORMATION



Bestcreate Technology Limited

TOLERANCES UNLESS OTHERWISE SPECIFIED:

.X	± 0.25	.X*	± 5*
.XX	± 0.20	.X*	± 4*
.XXX	± 0.15	.XX*	± 3*

Website: www.bsc-elec.com
Email: bestcreate@bsc-elec.com

DESIGN: I. L
DATE: 2022. 5. 13

CHECKED: C. W
DATE: 2022. 5. 13

APPROVED: C. W
DATE: 2022. 5. 13

TITLE: **USB TYPE C PLUG 12pin 端子镀金GF**
黑色LCB胶芯 直焊式 A6A7短路

MATERIAL:	PART NO: U06-CMXX5T-043	SIZE: A4
FINISH:	DWG NO: U06-CMXX5T-043	

REV: A UNIT mm SCALE 1=1 QUALITY SYMBOLS