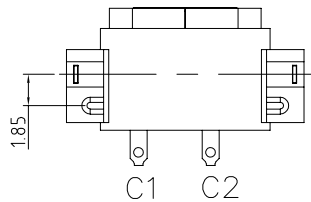
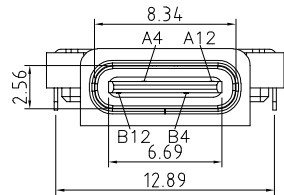
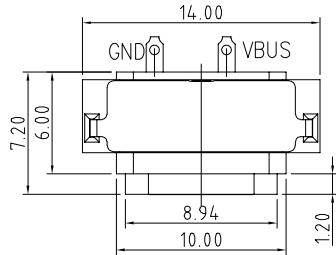


RoHS Compliant

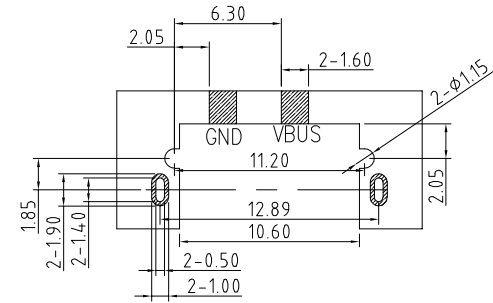
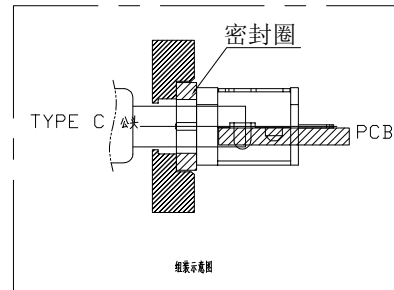
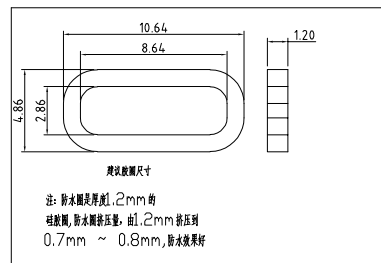
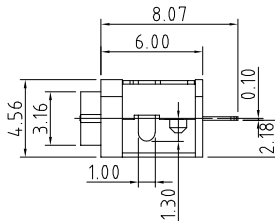


INTERFACE(FRONT VIEW)

A1	A2	A3	A4	A5	A6	A7	A8	A9	A10	A11	A12
GND			VBUS								GND
B12	B11	B10	B9	B8	B7	B6	B5	B4	B3	B2	B1

PIN ASSIGNMENT

PIN NO.	A12&B12	A4&B4
SINGAL NAME	GND	VBUS
PCB PAD NO.	C1	C2



RECOMMENDED PCB LAYOUT(TOP VIEW)

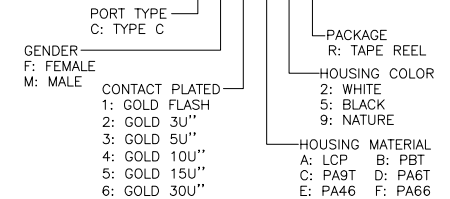
THICKNESS T=1.0mm
DEFAULT TOLERANCE+/-0.05

NOTES:
SPECIFICATION:

- CURRENT RATING: 3.0A MAX
- DIELECTRIC WITHSTAND VOLTAGE: 100VAC
- TEMPERATURE RANGE: -30 °C ~ 85 °C
- CONTACT RESISTANCE: 40 MILLIONHM MAX
- INSULATION RESISTANCE: 100 MEGOHMS MIN.
- INSERTION FORCE : 5N~20N
- UNMATING FORCE: 8N~20N
- DURABILITY:5000 CYCLES

PART NO. INFORMATION

U06-C F X X 5 R - W097



5	Shell2	1	SUS304 Ni Plating T=0.20mm	Ni:40~120u ² ;
4	Shell1	1	SUS304 Ni Plating T=0.3mm	Ni:40~120u ² ;
3	Housing2	1	LCP(G.F30%)	
2	Contact	4	Phosphor bronze_C5210R-EH Au/Ni Plating T=0.20mm	Ni:40~160u ² ; Au:CONTACT AREA:3u ² ; OTHER AREA:G/F
1	Housing	1	PA9T (G.F30%)	
ITEM	PARTNAME	Q'TY	FINISH	NOTE

Bestcreate Technology Limited

TOLERANCES UNLESS OTHERWISE SPECIFIED:

X.	± 0.50	X.'	± 5'
.X	± 0.30	.X'	± 2'
.XX	± 0.10	.XX'	± 1'

Website:www.bsc-elec.com
Email:bestcreate@bsc-elec.com

DESIGN: I.L DATE:

CHECKED: C.W DATE:

APPROVED: C.W DATE:

TITLE:
IPX8 WATERPROOF 2P USB C FEMALE CONNECTOR MID MOUNT TYPE

MATERILA:	PART NO: U06-CFXX5R-W097	SIZE: A4
FINSH:	DWG NO: U06-CFXX5R-W097	1 OF 1

REV: A UNIT mm SCALE 1=1 QUALITY SYMBOLS