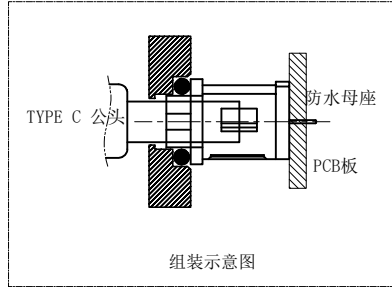
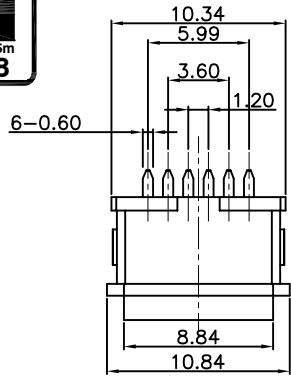
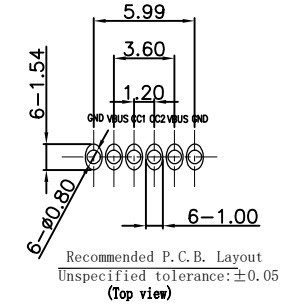


RoHS Compliant



REVISIONS			
REV.	DESCRIPTION	DATE	DESIGN



RECOMMENDED PCB LAYOUT(TOP VIEW)

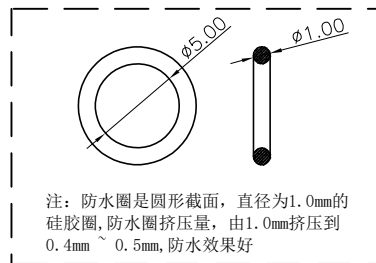
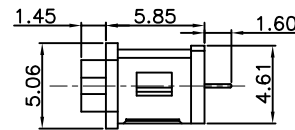
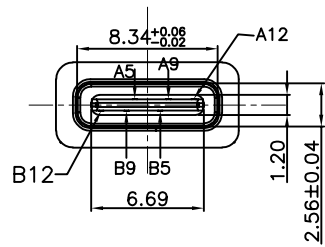
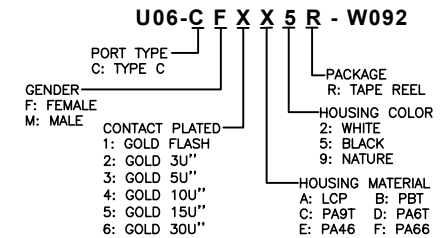
THICKNESS T=1.0mm
DEFAULT TOLERANCE+/-0.05

NOTES:

SPECIFICATION:

1. CURRENT RATING: 3.0A MAX
2. DIELECTRIC WITHSTAND VOLTAGE: 100VAC
3. TEMPERATURE RANGE: -30 °C ~ 85 °C
4. CONTACT RESISTANCE: 40 MILLIONHM MAX
5. INSULATION RESISTANCE: 100 MEGOHMS MIN.
6. INSERTION FORCE : 5N~20N
7. UNMATING FORCE: 8N~20N
8. DURABILITY:5000 CYCLES

PART NO. INFORMATION



4	Shell1	1	SUS301 Ni Plating T=0.25mm	Ni:40~120u"
3	Housing2	1	LCP(G.F30%)	
2	Contact	5	Phosphor bronze_C5210R-EH Au/Ni Plating T=0.20mm	Ni:40~160u" Au:CONTACT AREA:3u", OTHER AREA:G/F
1	Housing	1	PA9T (G.F30%)	
ITEM	PART NAME	Q' TY	FINISH	NOTE

A5	CC1	B12	GND
A9	VBUS	B9	VBUS
A12	GND	B5	CC2
PIN	SIGNAL NAME	PIN	SIGNAL NAME

Bestcreate Technology Limited

TOLERANCES UNLESS OTHERWISE SPECIFIED:

X.	± 0.50	X.'	± 5'
.X	± 0.30	.X'	± 2'
.XX	± 0.10	.XX'	± 1'

Website:www.bsc-elec.com

Email:bestcreate@bsc-elec.com

DESIGN:

I. L

DATE:

CHECKED:

C. W

DATE:

APPROVED:

C. W

DATE:

TITLE:

IPX8 WATERPROOF 6P USB C FEMALE
CONNECTOR DIP TYPE

MATERILA:

FINSH:

PART NO:

DWG NO:

U06-CFXX5R-W092

U06-CFXX5R-W092

SIZE: A4

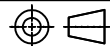
1 OF 1

REV: A

UNIT mm

SCALE 1=1

QUALITY SYMBOLS



1

2

3

4

5

6

7

8