

RoHS Compliant

REVISIONS			
REV.	DESCRIPTION	DATE	DESIGN

C NOTES

D MATERIAL

- 1.HOUSING MATERIAL : THERMO PLASTICS UL94V-0.
- 2.CONTACT MATERIAL : PHOSPHOR BRONZE T=0.3mm.
- 3.PLATING : GOLD PLATIN ON Contac AREA, TIN PLATING ON SOLER AREA, NICKEL PLATING ALL OVER.
- 4.SHIELD : 0.20mm THICKNESS COPPER ALLOY WITH NICKEL PLATED.

ELECTRICAL

- 1.VOLTAGE RATING : 125 VAC RMS.
- 2.CURRENT RATING : 1.5 AMP.
- 3.CONTACT RESISTANCE : 40 MILLIOHMS MAX.
- 4.INSULATION RESISTANCE : 500 MEGOHMS MIN @ 100V DC .
- 5.DIELECTRIC DIELECTRIC RESISTANCE : 500V DC RMS 50Hz. 1MIN.

MECHANICAL

- 1.DURRABILITY : 750 CYCLES MIN.
- 2. MATING/UNMATING FORC: 2.24 KG.F MAX.

ENVIRONMENTAL:

- 1.OPERATION : -40℃~+85℃.
- 2.STORAGE : -40℃~+85℃.

PART NO. INFORMATION

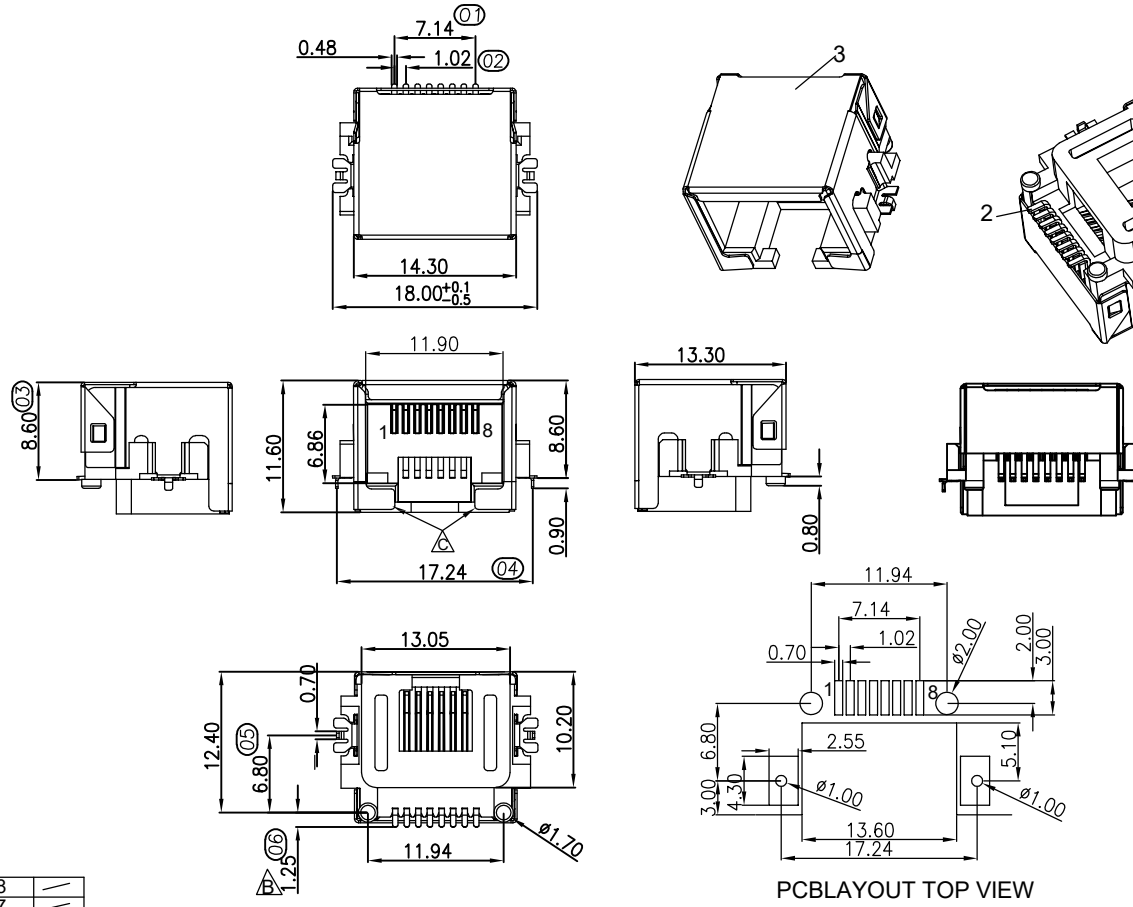
RJ01- X 5 0 X - 116

CONTACT PLATED

- 1: G/F
- 2: AU 3U"
- 3: AU 6U"
- 4: AU 15U"
- 5: AU 30U"

PACKAGE

- R: TAPE REEL
- T: TRAY



PCBLAYOUT TOP VIEW
TOL ±0.05

8	/
7	/
6	RX-
5	/
4	/
3	RX+
2	TX-
1	TX+

PIN序说明

Bestcreate Technology Limited

TOLERANCES UNLESS OTHERWISE SPECIFIED:			
.X	± 0.35	.X'	± 3'
.XX	± 0.25	.X'	± 2'
.XXX	± 0.15	.XX'	± 1'

Website: www.bsc-elec.com
Email: bestcreate@bsc-elec.com

DESIGN:	DATE:
I. L	2017. 3. 1
CHECKED:	DATE:
C. W	2017. 3. 1
APPROVED:	DATE:
C. W	2017. 3. 1

TITLE: MID MOUNT 8.6MM RJ45 FEMALE CONNECTOR SMT TYPE		
MATERILA:	PART NO:	SIZE:
	RJ01-X50X-116	A4
FINSH:	DWG NO:	
	RJ01-X50X-116	

REV: A	UNIT: mm	SCALE: 1=1	QUALITY SYMBOLS:
--------	----------	------------	------------------