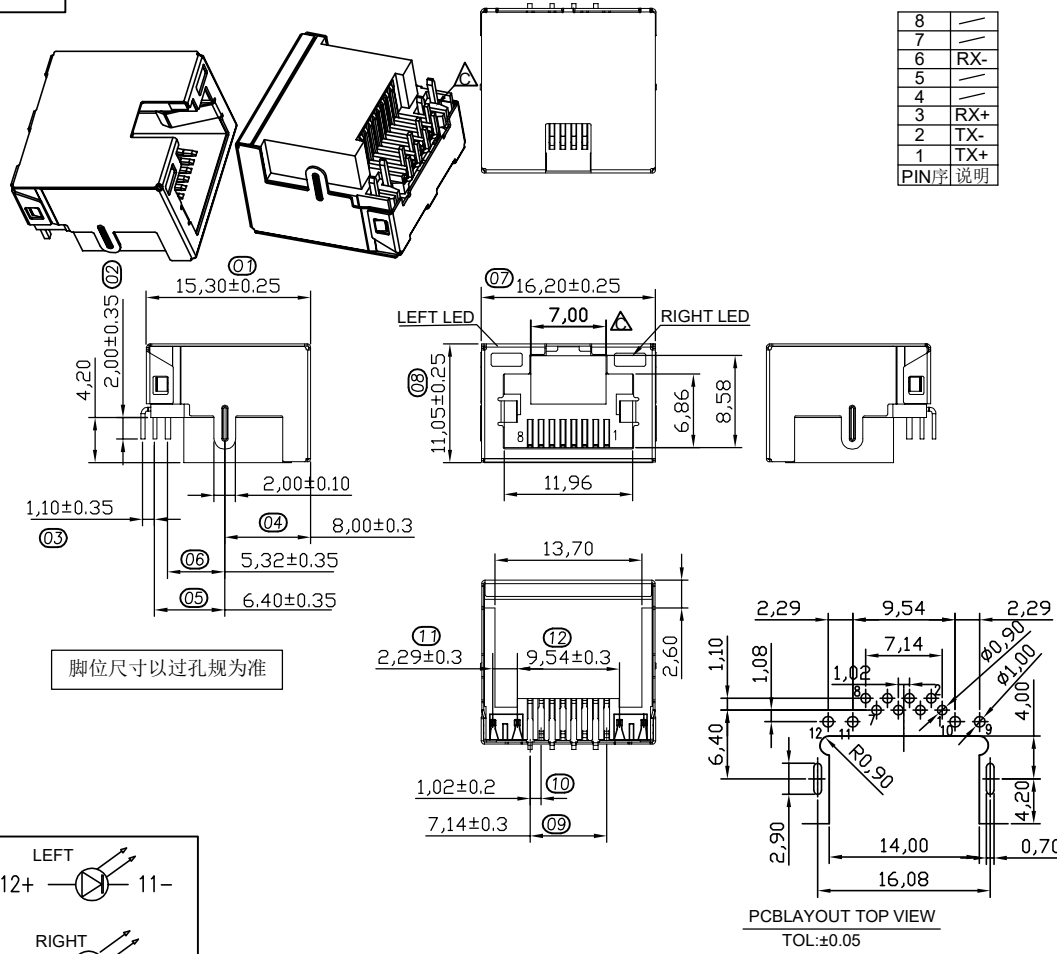


RoHS Compliant



8	—
7	—
6	RX-
5	—
4	—
3	RX+
2	TX-
1	TX+
PIN序 说明	

REVISIONS			
REV.	DESCRIPTION	DATE	DESIGN

NOTES:

- HOUSING MATERIAL: GLASS FILLED POLYESTER UL94V-0.
- CONTACT MATERIAL: COPPER ALLOY, T=0.35.
- PLATING: GOLD PLATED ON CONTACT AREA, 100u"MIN. TIN PLATED ON SOLDERING AREA, 50u"MIN. NICKEL PLATED OVERALL.
- SHELL: COPPER ALLOY, T=0.20. 30u"MIN. NICKEL PLATED OVERALL.
- LED: T=0.50, TIN PLATED.

ELECTRICAL:

- VOLTAGE RATING: 125V AC RMS.
- CURRENT RATING: 1.5AMP.
- CONTACT RESISTANCE: 30MILLIOHMS MAX.
- INSULATION RESISTANCE: 500MEG OHMS MIN @500V DC.

MECHANICAL:

- DURABILITY: 750 CYCLES MIN.
- INSERTION FORCE: 22N MAX.
- REMOVAL FORCE (WITHOUT PLUG LOCK): 22N MAX.

ENVIRONMENTAL:

- STORAGE: -40°C~85°C
- OPERATION: -40°C~85°C
- REFLOW SOLDERING Temperature, 255±5°C.

\*Apply to the EU standards (ROSH)

- 01-12 FOR QIP DIM.

脚位尺寸以过孔规为准

LEFT

RIGHT

**LED Specification**

Standard LED Color	LED Wavelength	Foward	Foward
Green	565nm	20mA	1.8-2.4V
Yellow	585nm	20mA	1.8-2.4V
ORANGE	585nm	20mA	1.8-2.8V

**PART NO. INFORMATION**

**RJ01- X X X X - 072**

CONTACT PLATED  
 1: G/F    2: AU 3U"  
 3: AU 5U"    4: AU 10U"  
 5: AU 15U"    6: AU 30U"

PACKAGE  
 R: TAPE&REEL  
 T: TRAY

HOUSING:  
 1:L-YELLOW R-GREEN    A:LCP BLACK  
 2:L-GREEN R-YELLOW  
 3:L-GREEN R-ORANGE

**Bestcreate Technology Limited**

TOLERANCES UNLESS OTHERWISE SPECIFIED:

.X	± 0.35	.X*	± 3"
.XX	± 0.25	.X*	± 2"
.XXX	± 0.15	.XX*	± 1"

Website: [www.bsc-elec.com](http://www.bsc-elec.com)  
 Email: [bestcreate@bsc-elec.com](mailto:bestcreate@bsc-elec.com)

DESIGN:	DATE:
I. L	2017. 3. 1
CHECKED:	DATE:
C. W	2017. 3. 1
APPROVED:	DATE:
C. W	2017. 3. 1

TITLE: MID MOUNT 4.2MM RJ45 FEMALE CONNECTOR		
MATERILA:	PART NO: RJ01-XXXX-072	SIZE: A4
FINSH:	DWG NO: RJ01-XXXX-072	

REV: A	UNIT mm	SCALE 1=1	QUALITY SYMBOLS
--------	---------	-----------	-----------------