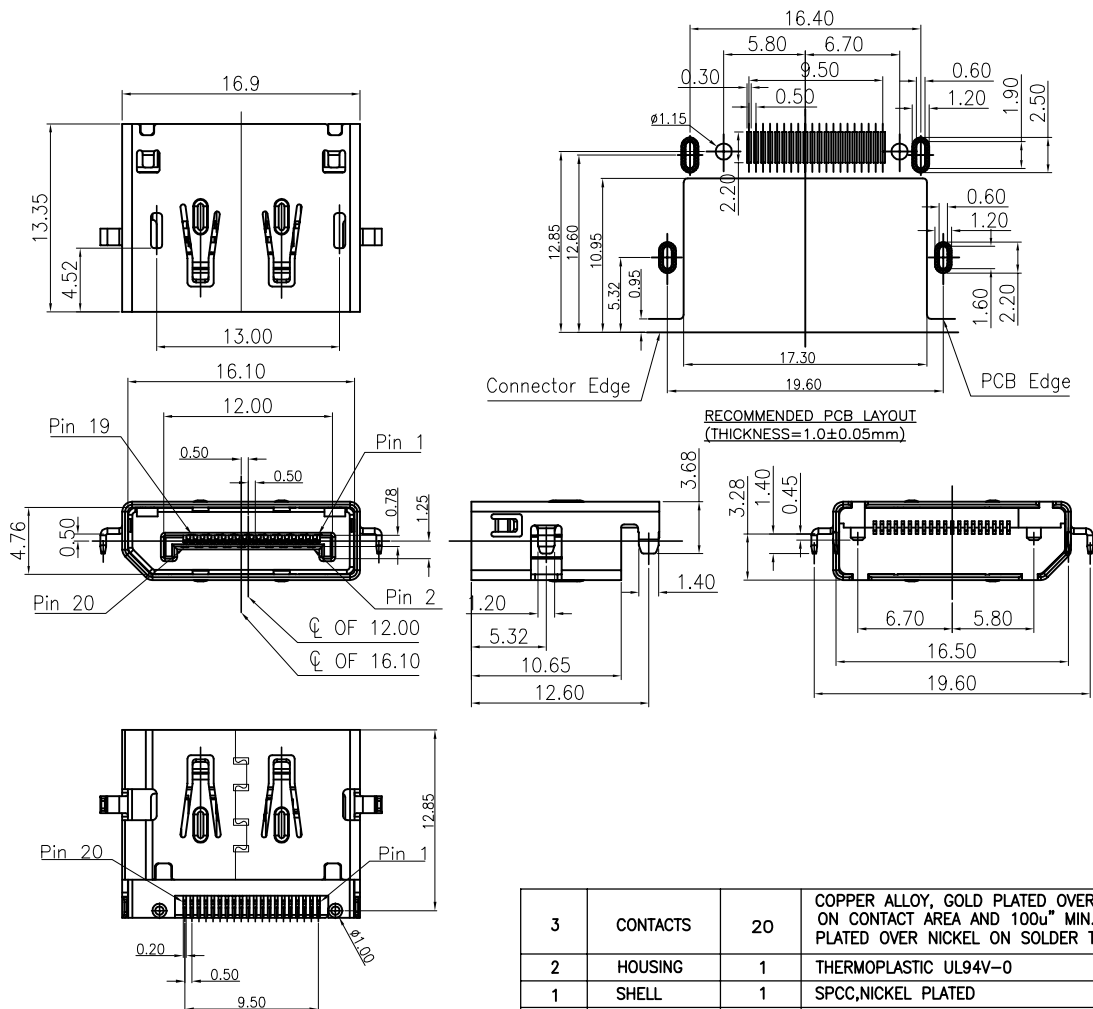


RoHS Compliant

REVISIONS

REV.	DESCRIPTION	DATE	DESIGN



NOTE:

A. MATERIAL:

1. Housing: LCP(HF) UL94V-0 Black
2. Contact: Copper Alloy
3. Shell: Steel

B. PLATING:

1. Contact: Contact Area Gold Plated
Solder Area Sn Plated
Under Plated Nickel
2. Shell: Nickel Plated

C. SPECIFICATION:

1. Current: 0.5A
2. Voltage: 40V RMS
3. Withstanding Voltage: 500V AC
4. Contact Resistance: $\Delta R=30\text{ m}\Omega$ max. (Contact)
 $\Delta R=50\text{ m}\Omega$ max. (Shell)
5. Insulation Resistance: 100 M Ω min.
6. Temperature Range: -20°C to +85°C
7. Mating And unmating Force:
7.1 Mating Force: 4.5Kgf(44.1N)Max.
7.2 Unmating Force: 1.0Kgf~4.0Kgf(9.8N~39.2N)
8. Durability: 10000 Cycles

PART NO. INFORMATION

DP09-FXX5T-006

GENDER:
F: FEMALE
M: MALE

CONTACT PLATED:
1: GOLD FLASH
2: GOLD 3U"
3: GOLD 5U"
4: GOLD 10U"
5: GOLD 15U"
6: GOLD 30U"

PACKAGE:
R: TAPE REEL T-TRAY
HOUSING COLOR:
2: WHITE
5: BLACK
9: NATURE
HOUSING MATERIAL:
A: LCP B: PBT
C: PA9T D: PA6T
E: PA46 F: PA66

3	CONTACTS	20	COPPER ALLOY, GOLD PLATED OVER NICKEL ON CONTACT AREA AND 100u" MIN. TIN PLATED OVER NICKEL ON SOLDER TAILS
2	HOUSING	1	THERMOPLASTIC UL94V-0
1	SHELL	1	SPCC, NICKEL PLATED
ITEM	NAME	Q'TY	NOTES

Bestcreate Technology Limited

TOLERANCES UNLESS OTHERWISE SPECIFIED:

.X	± 0.35	X.*	± 2"
.XX	± 0.25	.X.*	± 1"
.XXX	± 0.15	.XX.*	± 0.5"

Website: www.bsc-elec.com

Email: bestcreate@bsc-elec.com

DESIGN: I. L

DATE: 2017.3.1

CHECKED: C. W

DATE: 2017.3.1

APPROVED: C. W

DATE: 2017.3.1

TITLE:

MID MOUNT 1.0MM DISPLAYPORT FEMALE CONNECTOR

MATERIAL:

PART NO:

DP09-FXX5T-006

SIZE: A4

FINISH:

DWG NO:

DP09-FXX5T-006

REV: A

UNIT mm

SCALE 1=1

QUALITY SYMBOLS

