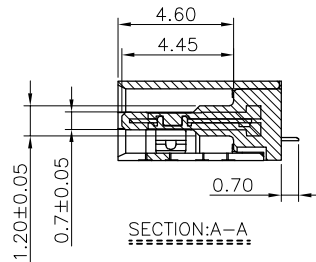
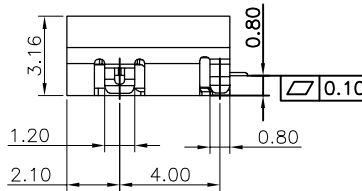
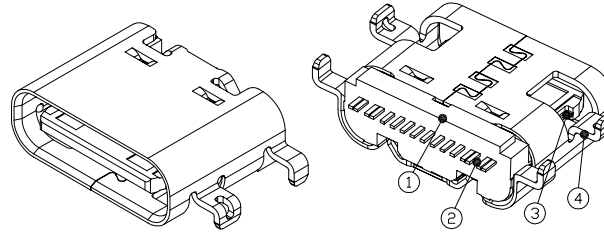
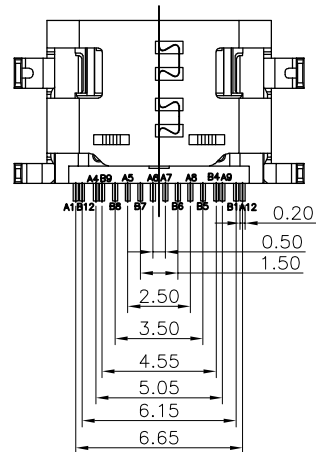
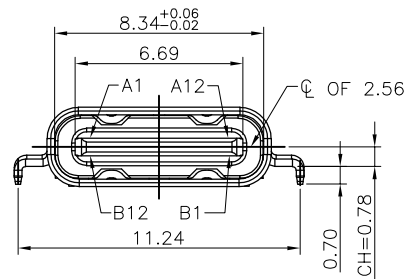
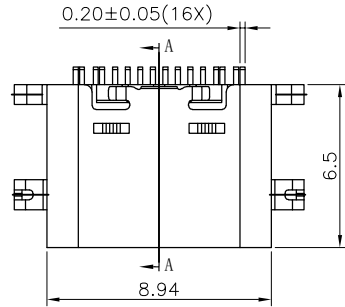


RoHS Compliant

REVISIONS

DESIGN



NOTE:

- Electrical Characteristics:
 - 1-1: Current Rating: 5A For Pin(A4,A9,B4,B9)
1.25A For Pin(B5)
0.25A For Others Pin
 - 1-2: VOLTAGE RATING:5.0V
 - 1-3: Insulation Resistance: 100MΩ Min.
 - 1-4: Contact Resistance:
VBUS & GND PINS AND OTHER PINS: 40mΩ/PIN MAX.
SHIELD:50mΩ/MAX.
SHIELD:LLCR MAX. CHANGE OF ALL PINS: 10mΩ.
 - 1-5: Dielectric Withstanding Voltage: 100V/AC 1Minute
- Mechanical Characteristics:
 - Insertion Force: 5~20N
 - Extraction Force: Initial: 8~20N
 - After durability: 6~20N
 - Durability :10000 Cycles
- Operating Temperature: -25°C TO +85°C

PART NO. INFORMATION

U06-C F X X 5 R - 013-V1

PORT TYPE
C: TYPE C

GENDER
F: FEMALE
M: MALE

CONTACT PLATED
1: GOLD FLASH
2: GOLD 3U"
3: GOLD 5U"
4: GOLD 10U"
5: GOLD 15U"
6: GOLD 30U"

PACKAGE
R: TAPE REEL

HOUSING COLOR
2: WHITE
5: BLACK
9: NATURE

HOUSING MATERIAL
A: LCP B: PBT
C: PA9T D: PA6T
E: PA46 F: PA66

TYPE:

4	SHELL	SUS304 1/2H T=0.30mm	NICKEL 30u" MIN PLATING	1PCS	
3	SHIELDING PLATE	SUS301 3/4H T=0.15mm	---	1PCS	
2	CONTACT	C18400-H T=0.12mm	NI 50U" MIN. UNDER PLATED OVER ALL Au PLATED ON THE FUNCTIONAL AREA OF CONTACT. PLATING G/F OF THE SOLDER AREA	2SET	
1	HOUSING	LCP/PA9T UL94V-0	BLACK	1PCS	
NO.	DESCRIPTION	MATERIAL	REMARKS	QTY	

Bestcreate Technology Limited

TOLERANCES UNLESS OTHERWISE SPECIFIED:

X.	±	0.30	X.*	±	5°
.X	±	0.15	.X.*	±	2°
.XX	±	0.10	.XX.*	±	1°

Website:www.bsc-elec.com

Email:bestcreate@bsc-elec.com

DESIGN:
I. L

DATE:

CHECKED:
C. W

DATE:

APPROVED:
C. W

DATE:

TITLE:

MID MOUNT 0.8MM 16PIN USB C FEMALE
CONNECTOR, L=6.5MM

MATERIAL:

PART NO:
U06-CFXX5R-013-V1

SIZE:
A4

FINISH:

DWG NO:
U06-CFXX5R-013-V1

REV:

A

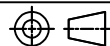
UNIT

mm

SCALE

1=1

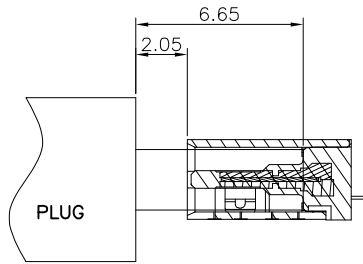
QUALITY
SYMBOLS



RoHS Compliant

REVISIONS

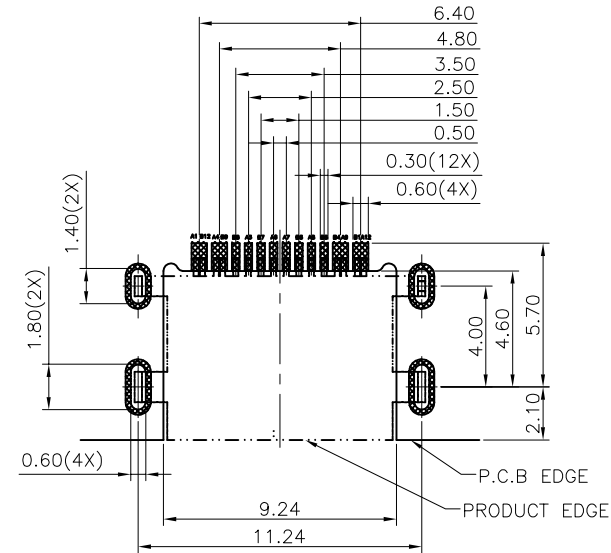
DESIGN



AFTER MATING

USB TYPE-C PIN ASSIGNMENTS

PIN NUMBER	SIGNAL NAME	PIN NUMBER	SIGNAL NAME
A1	GND	B12	GND
A4	VBUS	B9	VBUS
A5	CC1	B8	SBU2
A6	Dp1	B7	Dn2
A7	Dn1	B6	Dp2
A8	SBU1	B5	CC2
A9	VBUS	B4	VBUS
A12	GND	B1	GND



RECOMMENDED PCB LAYOUT(TOP VIEW)
THICKNESS 0.80MM;DEFAULT TOLERANCE:±0.05

Bestcreate Technology Limited

TOLERANCES UNLESS OTHERWISE SPECIFIED:

X.	±	0.30	X.*	±	5°
.X	±	0.15	.X*	±	2°
.XX	±	0.10	.XX*	±	1°

Website:www.bsc-elec.com
Email:bestcreate@bsc-elec.com

DESIGN:
I. L

DATE:

CHECKED:
C. W

DATE:

APPROVED:
C. W

DATE:

TITLE:

MID MOUNT 0.8MM 16PIN USB C FEMALE
CONNECTOR, L=6.5MM

MATERILA:

PART NO:

U06-CFXX5R-013-V1

SIZE:
A4

FINSH:

DWG NO:

U06-CFXX5R-013-V1

REV:
A

UNIT
mm

SCALE
1=1

QUALITY
SYMBOLS

