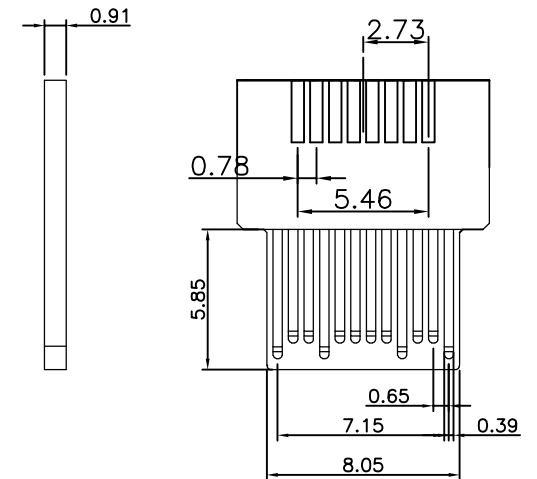
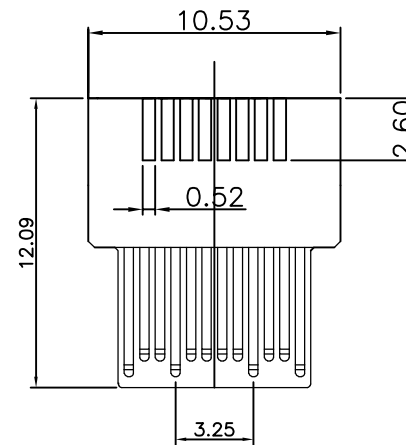
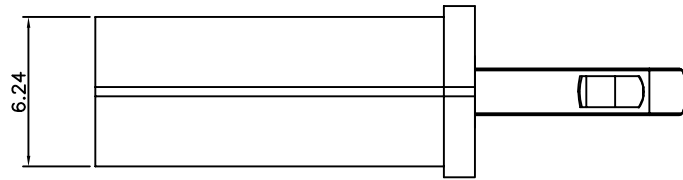
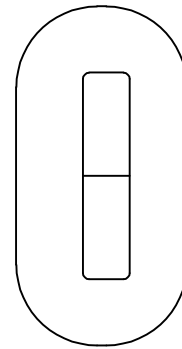
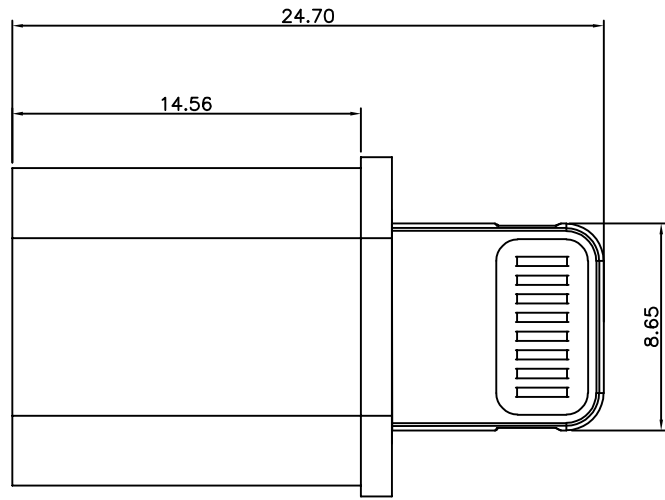
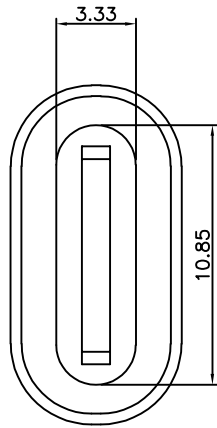


RoHS Compliant

REVISIONS			
REV.	DESCRIPTION	DATE	DESIGN



PCB
t=0.7mm

NOTE:

1. ELECTRICAL CHARACTERISTICS;
 - 2.1 CONTACT RESISTANCE: 80mΩ Max
 - 2.2 CONTACT CURRENT RATING: 1.5 A
 - 2.3 DIELECTRIC WITHSTANDING VOLTAGE: 100 V R. M. S.
 - 2.4 INSULATION RESISTANCE 100 MEGOHMS Min
 - 2.5 OPERATING TEMPERATURE: -25° C ~ 75° C
2. MECHANICAL CHARACTERISTICS:
 - 2.1 MATING FORCE: USB CM 5~20N & MICRO USB 35N Max.
 - 2.2 UNMATED FORCE: USB CM 8~20N & MICRO USB 10N Min.
3. PLATING
 - 3.1 TERMINAL CONTACT: (SEE TAB) GOLD PLATING
ALL OVER 50u"MIN NICKEL
 - 3.2 SHELL: 50u"MIN. NICKEL ALL OVER

3	AP M		AP AM NI	1PCS
2	TYPE CF		TYPE C F NI	0.005KG
1	PCBA		AP AM TO CF, NICKEL PLATED	1PCS
Item	Name	Part Number	Description	Q'TY

Bestcreate Technology Limited

TOLERANCES UNLESS OTHERWISE SPECIFIED:

X.	±	0.50	X'.	±	5'
.X	±	0.40	.X'	±	2'
.XX	±	0.30	.XX'	±	1'

Website: www.bsc-elec.com
Email: bestcreate@bsc-elec.com

DESIGN: I.L
DATE: 2017.3.1
CHECKED: C.W
DATE: 2017.3.1
APPROVED: C.W
DATE: 2017.3.1

TITLE: AP AM TO USB 3.1 CF ADAPTER L=19.0MM
MATERILA: ADAP31CF-073
PART NO: ADAP31CF-073
FINSH: ADAP31CF-073
SIZE: A4
DWG NO: ADAP31CF-073

REV: A
UNIT: mm
SCALE: 1=1
QUALITY SYMBOLS: