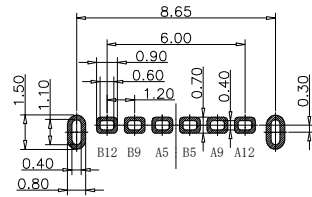
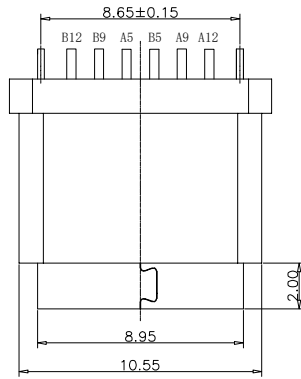


RoHS Compliant



RECOMMEND P.C.B LAYOUT(COMPONENT SIDE)  
TOLERANCE FOR PCB LAYOUT IS ±0.05

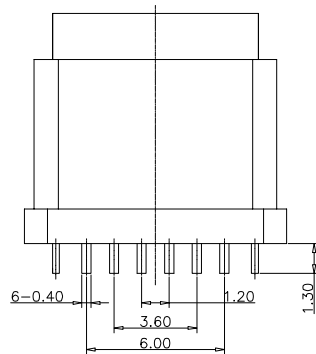
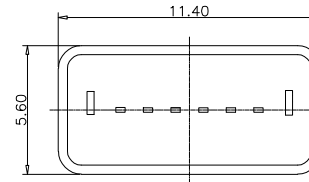
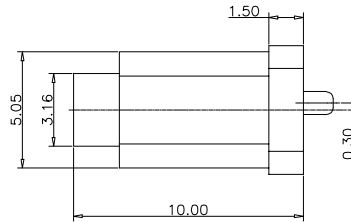
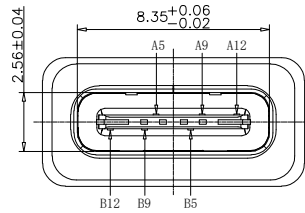


TABLE:

NO	PART	Q'TY	Material
1	SHELL	1	STAINLESS STEEL,NI PLATED
2	CONTACT	6	COPPER STEEL,TIN/Au/NI PLATED
3	1MD HOUSING	1	HIGH TEMPERATURE RESISTANT PLASTIC BLACK UL94 V-0
4	2MD HOUSING	1	HIGH TEMPERATURE RESISTANT PLASTIC BLACK UL94 V-0

REVISIONS			
REV.	DESCRIPTION	DATE	DESIGN

NOTE:

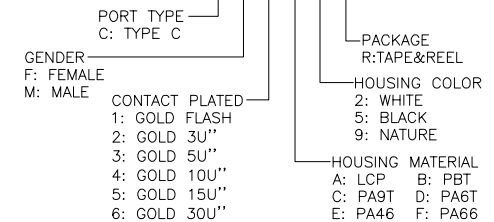
- ELECTRICAL:**
  - CONTACT: CONTACT RESISTANCE 40mΩ Max, 10mΩ LESS OR MORE IS ALLOWED. TEST CONDITION: 20mv, 100mA .
  - CURRENT ON CONTACT: 3A VBUS PIN-OUT; 1.25A FOR GND ; 0.25A FOR OTHERS.
  - RATED VOLTAGE: 30V.
  - WITHSTAND VOLTAGE: 100VR. M. S.
  - INSULATION RESISTANCE: AT LEAST 100megohm .
- MECHANICAL:**
  - MATING FORCE: 0.51-2.04Kg
  - UNMATING FORCE: 0.82-2.04Kg
  - DURABLENESS: 0.61-2.04Kg
  - LIFETIME: 10000 TIMES.
  - WORKING TEMPERATURE: -20°C to +85°C.

USB TYPE C PIN ASSIGNMENTS

PIN NUMBER	SIGNAL NAME	PIN NUMBER	SIGNAL NAME
		B12	GND
		B9	VBUS
A5	CC1		
		B5	CC2
A9	VBUS		
A12	GND		

PART NO. INFORMATION

**U06-C F X X 5 X - W039**



**Bestcreate Technology Limited**

TOLERANCES UNLESS OTHERWISE SPECIFIED:

.X	± 0.20	.X'	± 5
.XX	± 0.15	.X''	± 2'
.XXX	± 0.10	.X'''	± 1'

Website: www.bsc-elec.com

Email: bestcreate@bsc-elec.com

DESIGN: I.L DATE:

CHECKED: C.W DATE:

APPROVED: C.W DATE:

TITLE: **IPX7 Waterproof 6P Type C USB Female Connector Vertical DIP,H=10.0mm**

MATERILA:	PART NO:	SIZE:
	U06-CFXX5X-W039	A4
FINSH:	DWG NO:	
	U06-CFXX5X-W039	

REV:	UNIT	SCALE	QUALITY SYMBOLS
A	mm	1=1	