

RoHS Compliant



REVISIONS			
REV.	DESCRIPTION	DATE	DESIGN

NOTES:
SPECIFICATION:

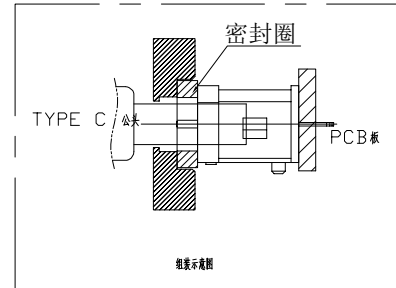
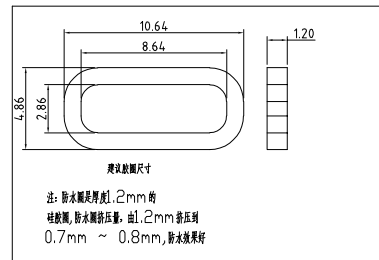
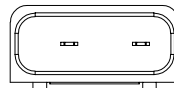
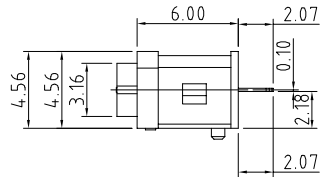
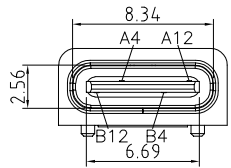
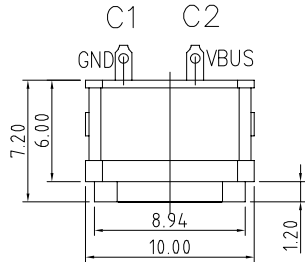
- CURRENT RATING: 3.0A MAX
- DIELECTRIC WITHSTAND VOLTAGE: 100VAC
- TEMPERATURE RANGE: -30 °C ~ 85 °C
- CONTACT RESISTANCE: 40 MILLIONHM MAX
- INSULATION RESISTANCE: 100 MEGOHMS MIN.
- INSERTION FORCE : 5N~20N
- UNMATING FORCE: 8N~20N
- DURABILITY:5000 CYCLES

INTERFACE(FRONT VIEW)

A1	A2	A3	A4	A5	A6	A7	A8	A9	A10	A11	A12
GND			VBUS						VBUS		GND
B12	B11	B10	B9	B8	B7	B6	B5	B4	B3	B2	B1

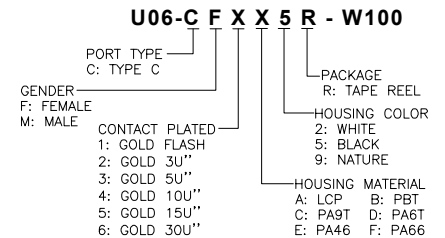
PIN ASSIGNMENT

PIN NO.	A12&B12	A4&B4
SINGAL NAME	GND	VBUS
PCB PAD NO.	C1	C2



5	Shell2	1	SUS304 Ni Plating T=0.20mm	Ni40~120u"
4	Shell1	1	SUS304 Ni Plating T=0.3mm	Ni40~120u"
3	Housing2	1	LCP(G.F30%)	
2	Contact	4	Phosphor bronze C5210R-EH Au/Ni Plating T=0.20mm	Ni40~160u" Au CONTACT AREA:3u" OTHER AREA:G/F
1	Housing	1	PA9T (G.F30%)	
ITEM	PARTNAME	Q'TY	FINISH	NOTE

PART NO. INFORMATION



Bestcreate Technology Limited

TOLERANCES UNLESS OTHERWISE SPECIFIED:

X.	± 0.50	X.'	± 5'
.X	± 0.30	.X'	± 2'
.XX	± 0.10	.XX'	± 1'

Website: www.bsc-elec.com
Email: bestcreate@bsc-elec.com

DESIGN: I.L DATE:
CHECKED: C.W DATE:
APPROVED: C.W DATE:

TITLE: **IPX8 WATERPROOF 6P USB C FEMALE CONNECTOR SMT TYPE**

MATERILA:	PART NO: U06-CFXX5R-W100	SIZE: A4
FINSH:	DWG NO: U06-CFXX5R-W100	1 OF 1

REV: A UNIT mm SCALE 1=1 QUALITY SYMBOLS