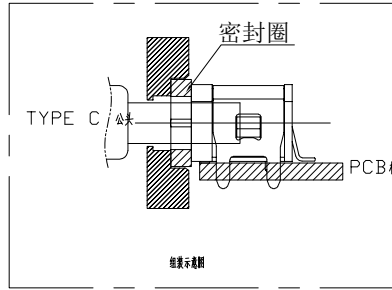
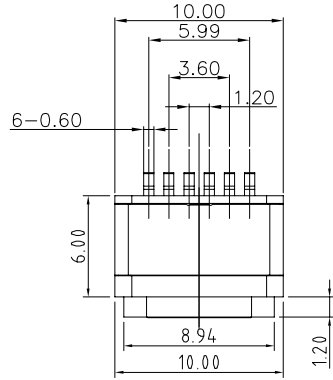
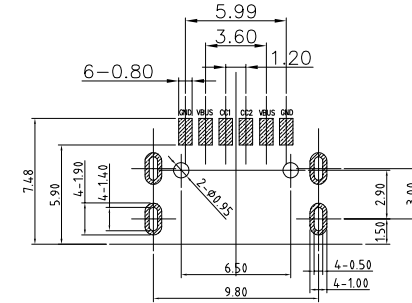


RoHS Compliant



REVISIONS			
REV.	DESCRIPTION	DATE	DESIGN



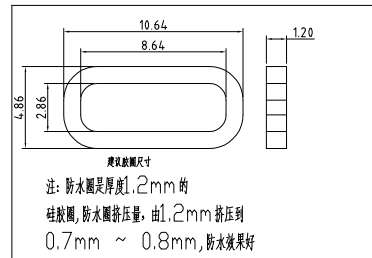
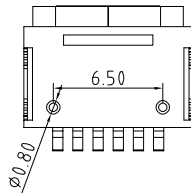
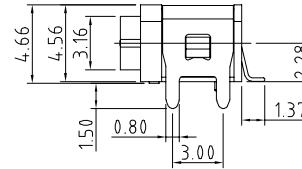
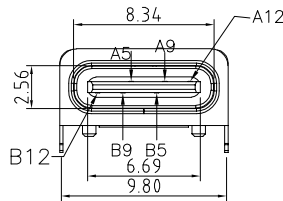
RECOMMENDED PCB LAYOUT(TOP VIEW)

THICKNESS T=1.0mm  
DEFAULT TOLERANCE+/-0.05

NOTES:

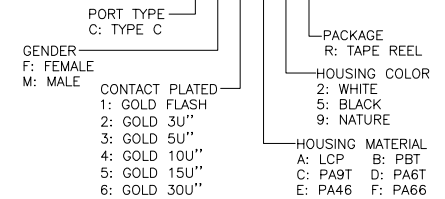
SPECIFICATION:

- CURRENT RATING: 3.0A MAX
- DIELECTRIC WITHSTAND VOLTAGE: 100VAC
- TEMPERATURE RANGE: -30 °C ~ 85 °C
- CONTACT RESISTANCE: 40 MILLIONHM MAX
- INSULATION RESISTANCE: 100 MEGOHMS MIN.
- INSERTION FORCE : 5N~20N
- UNMATING FORCE: 8N~20N
- DURABILITY:5000 CYCLES



PART NO. INFORMATION

U06-C F X X 5 R - W096



5	Shell2	1	SUS304 Ni Plating T=0.20mm	Ni40~120u'
4	Shell1	1	SUS304 Ni Plating T=0.3mm	Ni40~120u'
3	Housing2	1	LCP(G.F30%)	
2	Contact	4	Phosphor bronze C5210R-EH Au/Ni Plating T=0.20mm	Ni40~160u'; AwCONTACT AREA:3u', OTHER AREA:G/F
1	Housing	1	PA9T (G.F30%)	
ITEM	PARTNAME	Q'TY	FINISH	NOTE

A5	CC1	B12	GND
A9	VBUS	B9	VBUS
A12	GND	B5	CC2
PIN	SIGNAL NAME	PIN	SIGNAL NAME

Bestcreate Technology Limited

TOLERANCES UNLESS OTHERWISE SPECIFIED:

X.	± 0.50	X.'	± 5'
.X	± 0.30	.X'	± 2'
.XX	± 0.10	.XX'	± 1'

DESIGN:  
I.L

DATE:

TITLE:

IPX8 WATERPROOF 6P USB C FEMALE  
CONNECTOR SMT TYPE

CHECKED:

DATE:

MATERILA:

PART NO:  
U06-CFXX5R-W096

SIZE:  
A4

REV:

A

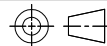
UNIT

mm

SCALE

1=1

QUALITY  
SYMBOLS



Website:www.bsc-elec.com

APPROVED:

DATE:

FINSH:

DWG NO:

U06-CFXX5R-W096

1 OF 1

1

2

3

4

5

6

7

8