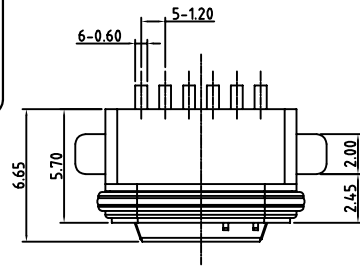
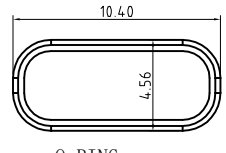
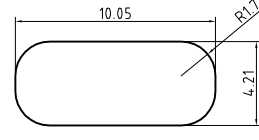
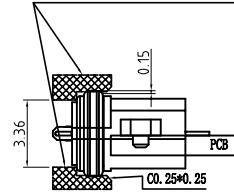


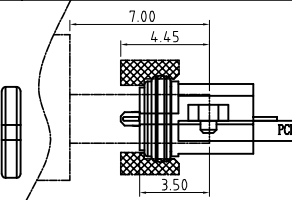
RoHS Compliant



THE GAP BETWEEN SHELL AND O-RING SHOULD BE 0.15 MIN FROM EACH SIDE



O-RING



INSERTION DEPTH OF THE PLUG

← ASSEMBLY DIRECTION

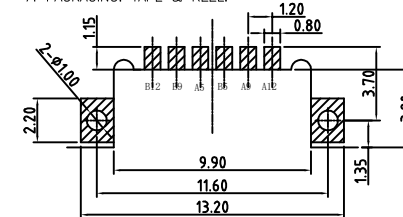
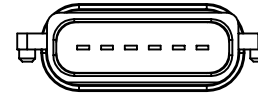
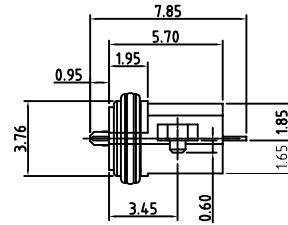
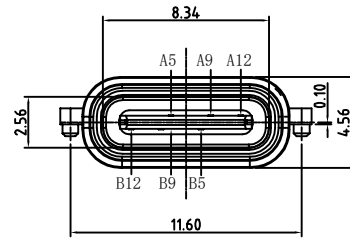
ASSEMBLY SCHEMATIC

CUT-OUT
NEED TO ADD LUBRICATING OIL
WHEN ASSEMBLY THE SHELL

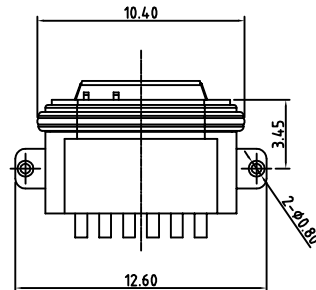
SPECIFICATIONS:

1. ELECTRICAL CHARACTERISTICS:

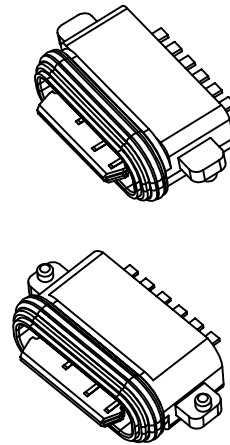
- 1.1. RATING: 3A;
- 1.2. CONTACT RESISTANCE: 30 mΩ MAX.(INITIAL);
- 1.3. DIELECTRIC WITHSTANDING: 100V AC MIN.;
- 1.4. INSULATION RESISTANCE: 100MΩ MIN.;
- 2. DURABILITY: 5,000 CYCLES MIN.;
- 3. INSERTION FORCE: 5-20N;
- 4. EXTRACTION FORCE: 6-20N;
- 5. WATER PROOFNESS: THIS PRODUCT IS BASED ON IPX7.
- 6. PLUG INTERFACE DIMENSIONS CONFORM TO USB2.0 SPEC.
- 7. PACKAGING: TAPE & REEL.



RECOMMENDED P. C. B LAYOUT
TOP VIEW (TOLRANCE: ±0.05)



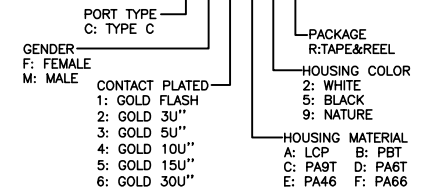
A5	CC1	B12	GND
A9	VBUS	B9	VBUS
A12	GND	B5	CC2
PIN	SIGNAL NAME	PIN	SIGNAL NAME



3	Shell	1	Ni Plating
2	Contact	6	Phosphor bronze Au/Ni Plating T=0.20mm
1	Housing	1	PA10T (G.F30%)
ITEM	PART NAME	Q' TY	FINISH

PART NO. INFORMATION

U06-C F X X 5 X - W057



Bestcreate Technology Limited

TOLERANCES UNLESS OTHERWISE SPECIFIED:

.X	± 0.30	.X'	± 2'
.XX	± 0.10	.X'	± 1'
.XXX	± 0.05	.X'	± 0.5'

Website: www.bsc-elec.com
Email: bestcreate@bsc-elec.com

DESIGN: I. L DATE:

CHECKED: C. W DATE:

APPROVED: C. W DATE:

TITLE:

IPX8 Waterproof 16P Type CF Connector Vertical SMT

MATERILA:

FINSH:

PART NO: U06-CFXX5X-W057

DWG NO: U06-CFXX5X-W057

SIZE: A4

REV: A UNIT mm SCALE 1=1 QUALITY SYMBOLS

