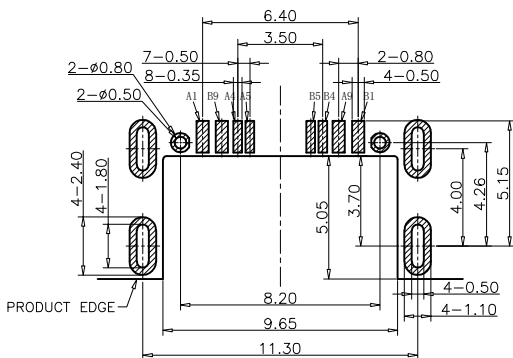
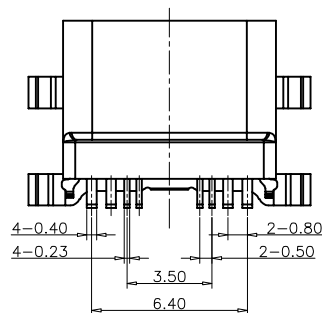
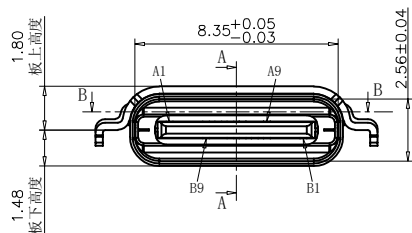
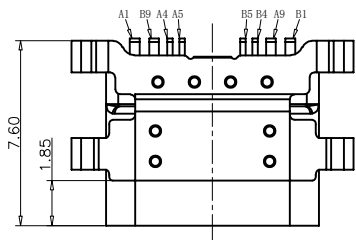
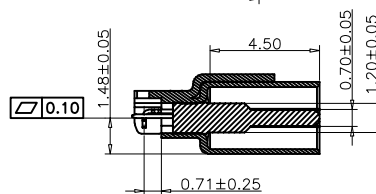
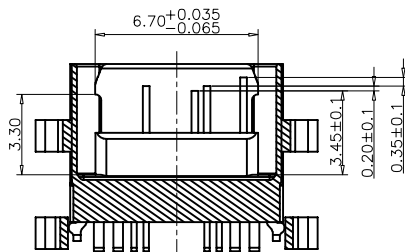
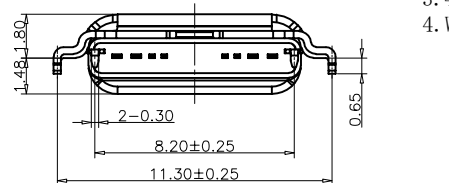
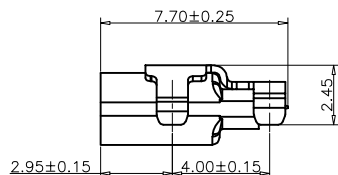


RoHS Compliant



RECOMMEND P.C.B LAYOUT (COMPONENT SIDE)
TOLERANCE FOR PCB LAYOUT IS ±0.05



SECTION A-A
SCALE 1:1

SECTION B-B
SCALE 1:1

REVISIONS

REV.	DESCRIPTION	DATE	DESIGN

NOTE:

- ELECTRICAL:
 - CONTACT: CONTACT RESISTANCE 40mΩ Max, 10mΩ LESS OR MORE IS ALLOWED.
TEST CONDITION: 20mv, 100mA .
 - CURRENT ON CONTACT: 3A VBUS PIN-OUT; 1.25A FOR GND ; 0.25A FOR OTHERS.
 - RATED VOLTAGE: 30V.
 - WITHSTAND VOLTAGE: 100VR. M. S.
 - INSULATION RESISTANCE: AT LEAST 100megohm .
- MECHANICAL:
 - MATING FORCE: 0.51-2.04Kg
 - UNMATING FORCE: 0.82-2.04Kg
 - DURABLENESS: 0.61-2.04Kg
 - LIFETIME: 10000 TIMES.
 - WORKING TEMPERATURE: -20°C to +85°C.

USB TYPE C PIN ASSIGNMENTS

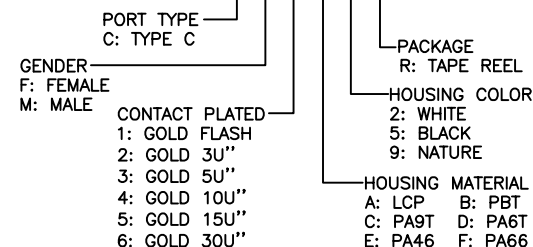
PIN NUMBER	SIGNAL NAME	PIN NUMBER	SIGNAL NAME
A1	GND	B9	VBUS
A4	VBUS	B1	GND
A5	CC1	B5	CC2
A9	VBUS	B4	VBUS

TABLE:

NO	PART	Q'TY	Material
1	SHELL-1	1	STAINLESS STEEL, Ni PLATED 30u"Min
2	SHELL-2	1	STAINLESS STEEL, Ni PLATED 30u"Min
3	CONTACT	12	COPPER STEEL, Ni 50u"Min; Au u"
4	MID PLATE	1	STAINLESS STEEL, NO PLATING
5	MD HOUSING	1	HIGH TEMPERATURE RESISTANT PLASTIC BLACK UL94 V-0

PART NO. INFORMATION

U06-C F X X 5 R - W030



Bestcreate Technology Limited

TOLERANCES UNLESS OTHERWISE SPECIFIED:

XX	± 0.20	X.	± 5"
.XX	± 0.15	.X.	± 2"
.XXX	± 0.10	.XX.	± 1"

Website: www.bsc-elec.com

Email: bestcreate@bsc-elec.com

DESIGN:
I. L

CHECKED:
C. W

APPROVED:
C. W

DATE:

DATE:

DATE:

TITLE:

IPX7 WATERPROOF 8P USB TYPE C FEMALE CONNECTOR, L=7.65MM

MATERIAL:

FINISH:

PART NO:

U06-CFXX5R-W030

DWG NO:

U06-CFXX5R-W030

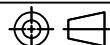
SIZE: A4

REV: A

UNIT mm

SCALE 1=1

QUALITY SYMBOLS



1

2

3

4

5

6

7

8