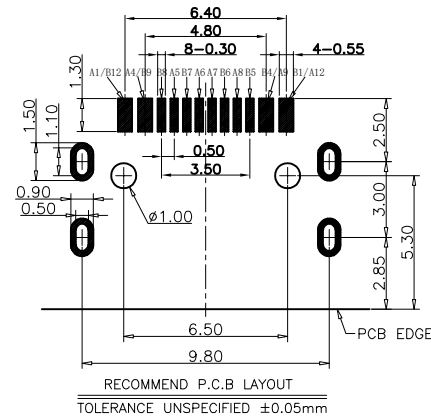
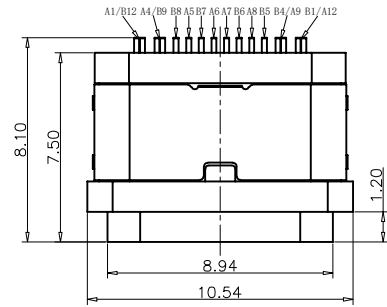
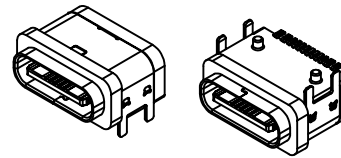
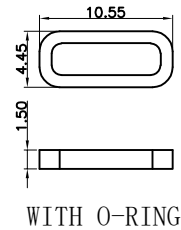
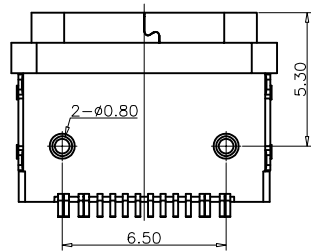
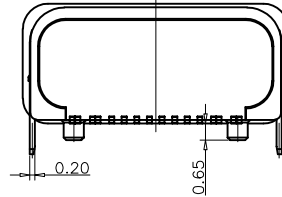
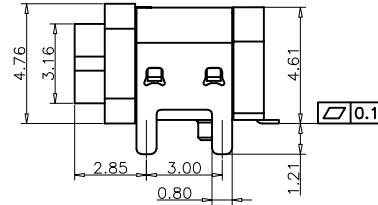
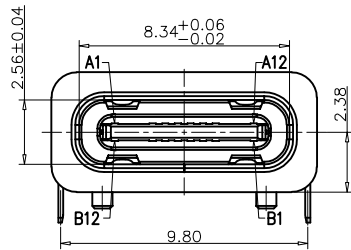


RoHS Compliant



RECOMMEND P.C.B LAYOUT
TOLERANCE UNSPECIFIED ±0.05mm



| REVISIONS | | | |
|-----------|-------------|------|--------|
| REV. | DESCRIPTION | DATE | DESIGN |
| | | | |

NOTES:

SPECIFICATION:

- CURRENT RATING: 3.0 A
- VOLTAGE RATING: 3.0 V
- VBUS & GND PINS AND OTHER PINS: 40mΩ/PIN MAX
SHIELD: 50mΩ/MAX
LLCR MAX. CHANGE OF ALL PINS: 100m
- INSULATION RESISTANCE: 100MΩ Min
- DIELECTRIC WITHSTAND VOLTAGE, AC 100V FOR 1MINUTE
- INSERTION FORCE: 0.5-2.0kgf
- UNMATING FORCE: 0.8-2.0kgf
- DURABILITY: 10000 CYCLES
- OPERATING TEMPERATURE: -35°C~+85°C
- THE PEAK TEMPERATURE ON THE BOARD SHALL BE MAINTAINED FOR 10 SECONDS AT 210-250°C
- WATERPROOF: IP-X7.

USB TYPE C PIN ASSIGNMENTS

| PIN NUMBER | SIGNAL NAME | PIN NUMBER | SIGNAL NAME |
|------------|-------------|------------|-------------|
| A1 | GND | B12 | GND |
| A4 | VBUS | B9 | VBUS |
| A5 | CC1 | B8 | SBU2 |
| A6 | DP1 | B7 | DN2 |
| A7 | DN1 | B6 | DP2 |
| A8 | SBU1 | B5 | CC2 |
| A9 | VBUS | B4 | VBUS |
| A12 | GND | B1 | GND |

TABLE:

| NO | PART | Q'TY | Material |
|----|-----------------|------|--------------------------------|
| 1 | PLASTIC SHELL | 1 | PA&LCP UL94 V-0 BLACK |
| 2 | SHELL | 1 | STAINLESS STEEL, NI PLATED |
| 3 | CONTACT | 16 | COPPER ALLOY, TIN/AU/NI PLATED |
| 4 | MD PLATE | 1 | STAINLESS STEEL, NO PLATING |
| 5 | MD HOUSING | 1 | PA&LCP UL94 V-0 BLACK |
| 6 | SHIELDING PLATE | 1 | STAINLESS STEEL, NI PLATED |
| 7 | WATERPROOF RING | 1 | SILICONE UL94 V-0 RED |

PART NO. INFORMATION

U06-C F X X 5 R - W018 -V2

- PORT TYPE
C: TYPE C
- GENDER
F: FEMALE
M: MALE
- CONTACT PLATED
1: GOLD FLASH
2: GOLD 3U"
3: GOLD 5U"
4: GOLD 10U"
5: GOLD 15U"
6: GOLD 30U"
- PACKAGE
R: TAPE REEL
- HOUSING COLOR
2: WHITE
5: BLACK
9: NATURE
- HOUSING MATERIAL
A: LCP B: PBT
C: PA9T D: PA6T
E: PA46 F: PA66

Bestcreate Technology Limited

TOLERANCES UNLESS OTHERWISE SPECIFIED:

| | | | |
|-----|--------|------|--------|
| X. | ± 0.50 | X.' | ± 2' |
| .X | ± 0.30 | .X' | ± 1' |
| .XX | ± 0.10 | .XX' | ± 0.5' |

Website: www.bsc-elec.com
Email: bestcreate@bsc-elec.com

DESIGN: I. L. DATE:

CHECKED: C. W. DATE:

APPROVED: C. W. DATE:

TITLE: IP67 WATERPROOF USB TYPE-C 16PIN FEMALE CONNECTOR

| | | |
|-----------|-----------------------------|----------|
| MATERIAL: | PART NO: U06-CFXX5R-W018-V2 | SIZE: A4 |
| FINISH: | DWG NO: U06-CFXX5R-W018-V2 | |

REV: A UNIT mm SCALE 1=1 QUALITY SYMBOLS