

RoHS Compliant

REVISIONS			
REV.	DESCRIPTION	DATE	DESIGN

SPECIFICATIONS:

1. ELECTRICAL CHARACTERISTICS

- 1-1. CURRENT RATING: 0.5 AMP
- 1-2. VOLTAGE RATING: 40 V
- 1-3. CONTACT RESISTANCE: 30MILLIOHMS MAX
- 1-4. INSULATION RESISTANCE: 100M MIN. @500V DC
- 1-5. DIELECTRIC WITHSTANDING VOLTAGE: 500V AC FOR 1 MINUTE

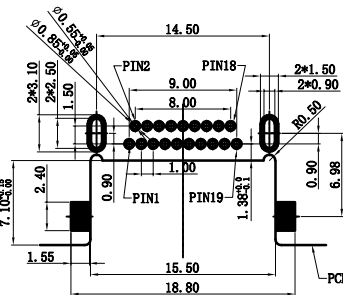
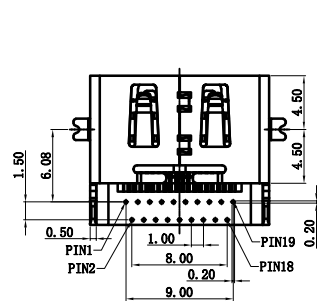
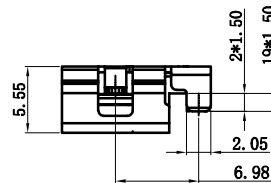
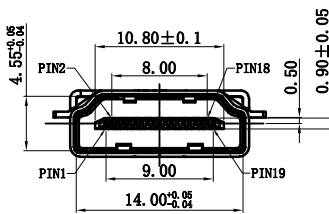
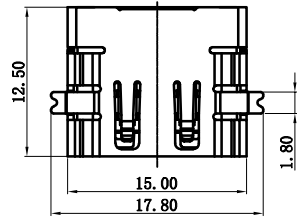
2. MECHANICAL CHARACTERISTICS:

- 2-1. INSERTION FORCE : 4.5KGF MAX.
- 2-2. WITHDRAWING FORCE : 1KGF ~ 4KGF.

3. LIFE TEST: 10000 CYCLES

4. OPERATING TEMPERATURE: -25° C TO +85° C

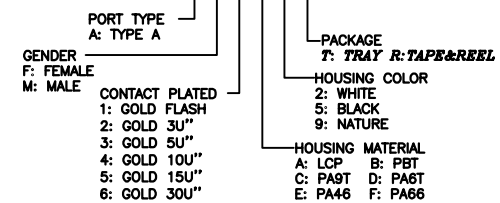
5. PART NO. DESCRIPTION:



RECOMMEND PCB LAYOUT (T=1.2mm)
TOLERANCE: ±0.01

PART NO. INFORMATION

HD01-A F X X 5 X - 037



C	SHELL	1	C2680R-H T=0.5MM, Ni 50u"MIN. NICEL ALL OVER
B	TERMINAL	19	C2680R-H SEE PART NO.
A	HOUSING	1	LCP E130i UL94V-0 BLACK
NO	PART NAME	QTY	MATERIAL PLATING & COLOR

Bestcreate Technology Limited

TOLERANCES UNLESS OTHERWISE SPECIFIED:

.X	± 0.35	X'	± 3'
.XX	± 0.25	.X'	± 2'
.XXX	± 0.15	.XX'	± 1'

DESIGN:	DATE:
I. L	2017. 3. 1
CHECKED:	DATE:
C. W	2017. 3. 1
APPROVED:	DATE:
C. W	2017. 3. 1

TITLE:		
HDMI 2.1 VERSION A FEMALE CONNECTOR REVERSE TYPE		
MATERILA:	PART NO:	SIZE:
FINSH:	HDO1-AFXX5X-037	A4
DWG NO:	HDO1-AFXX5X-037	

REV:	UNIT	SCALE	QUALITY SYMBOLS
A	mm	1=1	

E-mail: bestcreate@bsc-elec.com
Website: www.bsc-elec.com