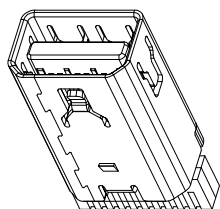
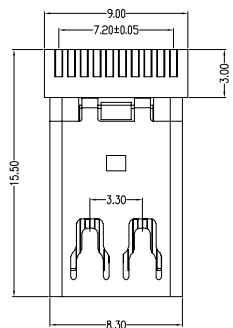


RoHS Compliant

REVISIONS			
REV.	DESCRIPTION	DATE	DESIGN



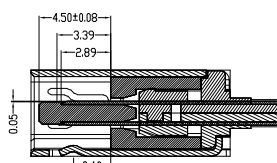
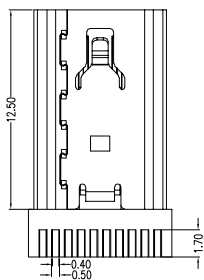
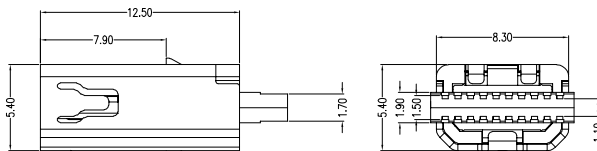
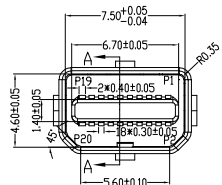
Top Row			Bottom Row		
Pin Number	Signal Type	Pin Name	Pin Number	Signal Type	Pin Name
1	GND	GND	2	In	HotPlug Detect
3	Out	ML_Lane 0(p)	4	CONFIG	CONFIG1
5	Out	ML_Lane 0(n)	6	CONFIG	CONFIG2
7	GND	GND	8	GND	GND
9	Out	ML_Lane 1(p)	10	Out	ML_Lane 3(p)
11	Out	ML_Lane 1(n)	12	Out	ML_Lane 3(n)
13	GND	GND	14	GND	GND
15	Out	ML_Lane 2(p)	16	I/O	AUX_CH(p)
17	Out	ML_Lane 2(n)	18	I/O	AUX_CH(n)
19	GND	GND	20	PWR Out	DP_PWR

Body and sheath: LCP+50%G.F UL94V-0 Color:Black  
 Insert(Molding): LCP+30%G.F UL94V-0 Color:Black  
 Contact: C5191;  
 Plating: Gold plating over Nickel(40~80U")  
 on contact area,Tin(100~250U")  
 Plating on Solder Tail.  
 Shell: Brass;  
 Plating: Nackle(40~80U") Plating.

Insertion Force: 4.5Kg Max  
 Withdrawal Force: 1.0~4.0Kg Min  
 Durability: 5000 Cycles

Current Rating: 0.5 Ampere per contact  
 Contact Resistance: 30 mΩ max.  
 Insulation Resistance: 100MΩ Min  
 Dielectric Withstanding Voltage: 500V AC Min

Operating Temperature: -40°C to +85°C.



截面 A-A

PART NO. INFORMATION

**MDP09- F X X 5 X - 003-V1-B**

GENDER  
 F: FEMALE  
 M: MALE

CONTACT PLATED  
 1: GOLD FLASH  
 2: GOLD 3U"  
 3: GOLD 5U"  
 4: GOLD 10U"  
 5: GOLD 15U"  
 6: GOLD 30U"

PACKAGE  
 R: TAPE REEL B:BAG  
 HOUSING COLOR  
 2: WHITE  
 5: BLACK  
 9: NATURE  
 HOUSING MATERIAL  
 A: LCP B: PBT  
 C: PA9T D: PA6T  
 E: PA46 F: PA66

**Bestcreate Technology Limited**

TOLERANCES UNLESS OTHERWISE SPECIFIED:

.X	± 0.35	X.*	± 3*
.XX	± 0.25	.X.*	± 2*
.XXX	± 0.15	.XX.*	± 1*

Website: www.bsc-elec.com  
 Email: bestcreate@bsc-elec.com

DESIGN: I.L  
 DATE: 2017.3.1  
 CHECKED:  
 DATE:  
 C.W  
 2017.3.1  
 APPROVED:  
 DATE:  
 C.W  
 2017.3.1

TITLE: MINI DP FEMALE CONNECTOR FOR WIRE SOLDERING

MATERILA:	PART NO: MDP09-FXX5X-003-V1-B	SIZE: A4
FINSH:	DWG NO: MDP09-FXX5X-003-V1-B	

REV: A UNIT mm SCALE 1=1 QUALITY SYMBOLS